

Port security advice for the general public



In the event of a heightened or exceptional security level being declared at the Port of Weipa, additional security measures will be put in place on both the land and sea around the port. Boat skippers operating in the port area will need to be mindful to always observe restricted areas on the water.

Security levels

The following three security levels have been adopted by the government and maritime security industry across Australia.

- **Level 1 (Normal):** the level for which minimum appropriate protective security measures will be maintained within the Port of Weipa.
- **Level 2 (Heightened):** the level for which appropriate additional protective security measures will be maintained, for a period of time, as a result of the heightened risk of a security incident.
- **Level 3 (Exceptional):** the level for which further specific protective security measures will be maintained, for a limited period of time, when a security incident is probable or imminent, although it may not be possible to identify the specific target.

It is expected that Levels 2 and 3 would be rare, short-term events. The Federal Government will notify ports when the security level has been raised, based on intelligence advice.

Public access land-side

At the Lorim Point Wharf and Humbug Wharf, a new land-side restricted zone established under the Maritime Transport and Offshore Facilities Security Act 2003 will apply at all times around the facilities. Signs will be displayed advising the location of the zone.

The public's existing use of the Evan's Landing Wharf for fishing has been recognised and will not be affected. However, as occurs at present, when a fuel ship is at the Evan's Landing Wharf, the wharf will be closed to the public.

At a heightened level of security, the wharf and jetty will be designated as a land-side restricted zone at these times, with any breach of the zone being an

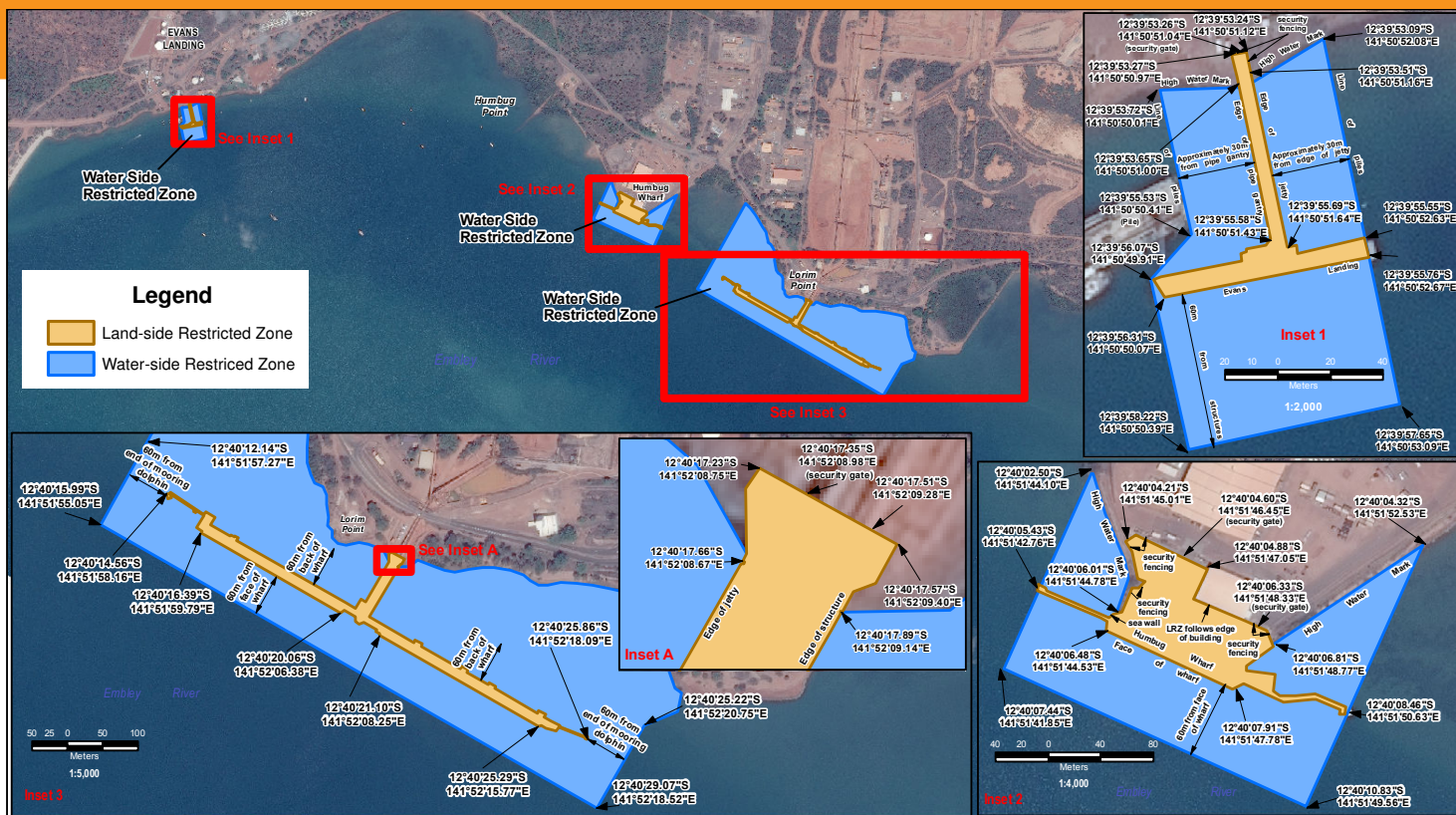
offence under the *Maritime Transport and Offshore Facilities Act 2003*, with associated heavy penalties.

The continued public use of the boat ramp at Evan's Landing Wharf will not be affected, unless there is a specific security threat related to the port or ship in the port. However, a water-side restricted zone around Evan's Landing Wharf will apply at heightened levels of security.

Public access water-side

There are no security-restricted areas on the water under normal circumstances. However, mariners are advised that a ship safety exclusion zone extends 60 metres from the front, sides and from the rear to the shoreline of Lorim Point Wharf including the mooring dolphins, access jetty and any vessels berthed on Lorim Point Wharf. Vessels not involved in port operations, including recreational vessels are prohibited from entering the declared zone at all times.

Weipa water-side restricted zone



If the port is put on heightened security (security levels 2 and 3), several water-side restricted zones will come into force. These zones are adjacent to the Lorim Point Wharf, Humbug Wharf and Evan's Landing Wharf and extend for 60 metres from the face and sides of the wharves to restrict anyone approaching the wharves from the water. The zones at Humbug Wharf and Evan's Landing only apply when a ship is at the wharf. The zone at Lorim Point applies at all times while at a heightened level of security.

At a security level 2, a water-side restricted zone applies around the Evan's Landing Wharf whenever an international ship or fuel ship is at the wharf (see map). The zones extends 60 metres out from the wharf into the river. The boundaries of the zone have been selected to allow continued access to the boat

ramp at these times, although boat owners will need to approach the wharf from downstream of the boat ramp when the zone is in place. Boats or fishing vessels must not come into the restricted zone. The zone is not in force under normal conditions, but for safety reasons, boats must keep a safe distance from a fuel ship at the wharf and must not pass under mooring lines.

A sign will be erected at the boat ramp when at heightened levels of security to warn boat operators that the water-side restricted zones are in force.

Breaching port security zones

Breaches of port security zones would jeopardise the security and operation of the port and anyone caught breaching the rules faces heavy fines. Port and port facility staff have been instructed to be on the look out for breaches and will adopt a zero tolerance.

Community support of port security

Apart from observing the access restriction, the general public and boat owners are asked to be on the look out for any suspicious behaviour in the port that may indicate a security threat. This should be reported to NQBP or port facility staff. Your cooperation would be appreciated.

These security measures have been implemented Australia-wide and NQBP and the Port of Weipa facility operators, ask for your understanding and assistance in meeting our security obligations.

Contact

For more information, please contact Port Security on 07 4069 7749 in the first instance or 07 4955 8174.

NORTH QUEENSLAND BULK PORTS
P 1300 129 255 E info@nqbp.com.au

HAY POINT • MACKAY • ABBOT POINT • WEIPA



nqbp.com.au

SMART PORTS • BRIGHT FUTURE