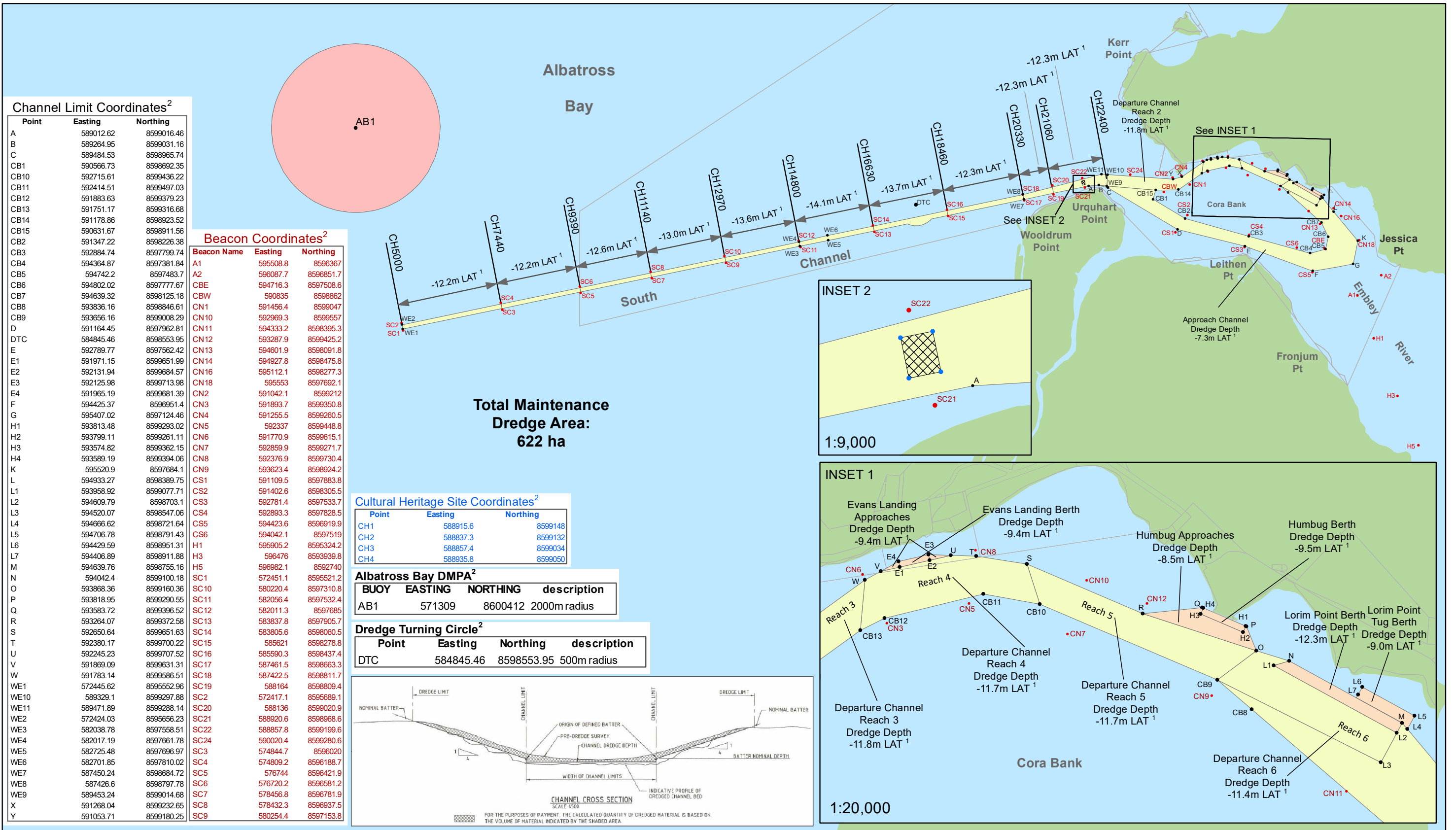


# Port of Weipa - Maintenance Dredging Area

Data Sources  
 North Queensland Bulk Ports  
 Maritime Safety Queensland  
 Department of Natural Resources and Mines, Qld  
 Permit SPDC03829912 (24 April 2012) E12/15800  
 Permit IPCC00297605D11 (31 August 2005) E10/63492



### Channel Limit Coordinates<sup>2</sup>

Point	Easting	Northing
A	589012.62	8599016.46
B	589264.95	8599031.16
C	589484.53	8598965.74
CB1	590566.73	8598892.35
CB10	592715.61	8599436.22
CB11	592414.51	8599497.03
CB12	591883.63	8599379.23
CB13	591751.17	8599316.68
CB14	591178.86	8598923.52
CB15	590631.67	8598911.56
CB2	591347.22	8598226.38
CB3	592884.74	8597799.74
CB4	594364.87	8597381.84
CB5	594742.2	8597483.7
CB6	594802.02	8597777.67
CB7	594639.32	8598125.18
CB8	593836.16	8598846.61
CB9	593656.16	8599008.29
D	591164.45	8597962.81
DTC	584845.46	8598553.95
E	592789.77	8597562.42
E1	591971.15	8599651.99
E2	592131.94	8599684.57
E3	592125.98	8599713.98
E4	591965.19	8599681.39
F	594425.37	8599651.4
G	595407.02	8597124.46
H1	593813.48	8599293.02
H2	593799.11	8599261.11
H3	593574.82	8599362.15
H4	593589.19	8599394.06
K	595520.9	8597684.1
L	594933.27	8598389.75
L1	593958.92	8599077.71
L2	594609.79	8598703.4
L3	594520.07	8598547.06
L4	594666.62	8598721.64
L5	594706.78	8598791.43
L6	594429.59	8598951.31
L7	594406.89	8598911.88
M	594639.76	8598755.16
N	594042.4	8599100.18
O	593868.36	8599160.36
P	593818.95	8599290.55
Q	593583.72	8599396.52
R	593264.07	8599372.58
S	592650.64	8599651.63
T	592380.17	8599700.22
U	592245.23	8599707.52
V	591869.09	8599631.31
W	591783.14	8599586.51
WE1	572445.62	8595552.96
WE10	589329.1	8599297.88
WE11	589471.89	8599288.14
WE2	572424.03	8595656.23
WE3	582038.78	8597558.51
WE4	582017.19	8597661.78
WE5	582725.48	8597696.97
WE6	582701.85	8597810.02
WE7	587450.24	8598684.72
WE8	587426.6	8598797.78
WE9	589453.24	8599014.68
X	591268.04	8599232.65
Y	591053.71	8599180.25

### Beacon Coordinates<sup>2</sup>

Beacon Name	Easting	Northing
A1	595508.8	8596367
A2	596087.7	8596851.7
CBE	594716.3	8597508.6
CBW	590835	8598862
CN1	591456.4	8599047
CN10	592969.3	8599557
CN11	594333.2	8598395.3
CN12	593287.9	8599425.2
CN13	594601.9	8598091.8
CN14	594927.8	8598475.8
CN16	595112.1	8598277.3
CN18	595553	8597692.1
CN2	591042.1	8599212
CN3	591893.7	8599350.8
CN4	591255.5	8599260.5
CN5	592337	8599448.8
CN6	591770.9	8599615.1
CN7	592859.9	8599271.7
CN8	592376.9	8599730.4
CN9	593623.4	8598924.2
CS1	591109.5	8597883.8
CS2	591402.6	8598305.5
CS3	592781.4	8597533.7
CS4	592893.3	8597828.5
CS5	594423.6	8596919.9
CS6	594042.1	8597519
H1	595905.2	8595324.2
H3	596476	8593939.8
H5	596982.1	8592740
SC1	572451.1	8595521.2
SC10	580220.4	8597310.8
SC11	582056.4	8597532.4
SC12	582011.3	8597685
SC13	583837.8	8597905.7
SC14	583805.6	8598060.5
SC15	585621	8598278.8
SC16	585590.3	8598437.4
SC17	587461.5	8598663.3
SC18	587422.5	8598811.7
SC19	588164	8598809.4
SC2	572417.1	8595689.1
SC20	588136	8599020.9
SC21	588920.6	8598968.6
SC22	588857.8	8599199.6
SC24	590020.4	8599280.6
SC3	574844.7	8596020
SC4	574809.2	8596188.7
SC5	576744	8596421.9
SC6	576720.2	8596581.2
SC7	578456.8	8596781.9
SC8	578432.3	8596937.5
SC9	580254.4	8597153.8

### Cultural Heritage Site Coordinates<sup>2</sup>

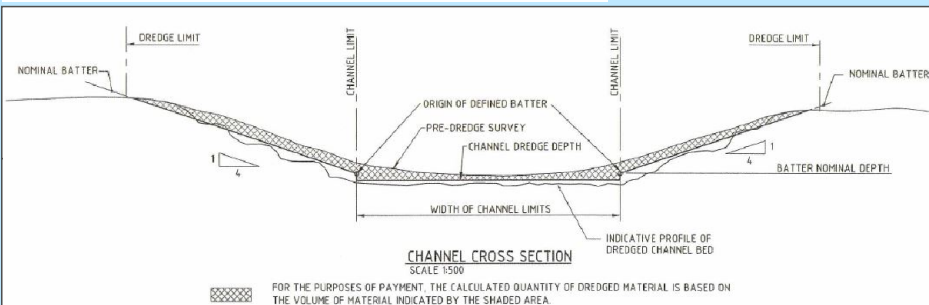
Point	Easting	Northing
CH1	588915.6	8599148
CH2	588837.3	8599132
CH3	588857.4	8599034
CH4	588935.8	8599050

### Albatross Bay DMPA<sup>2</sup>

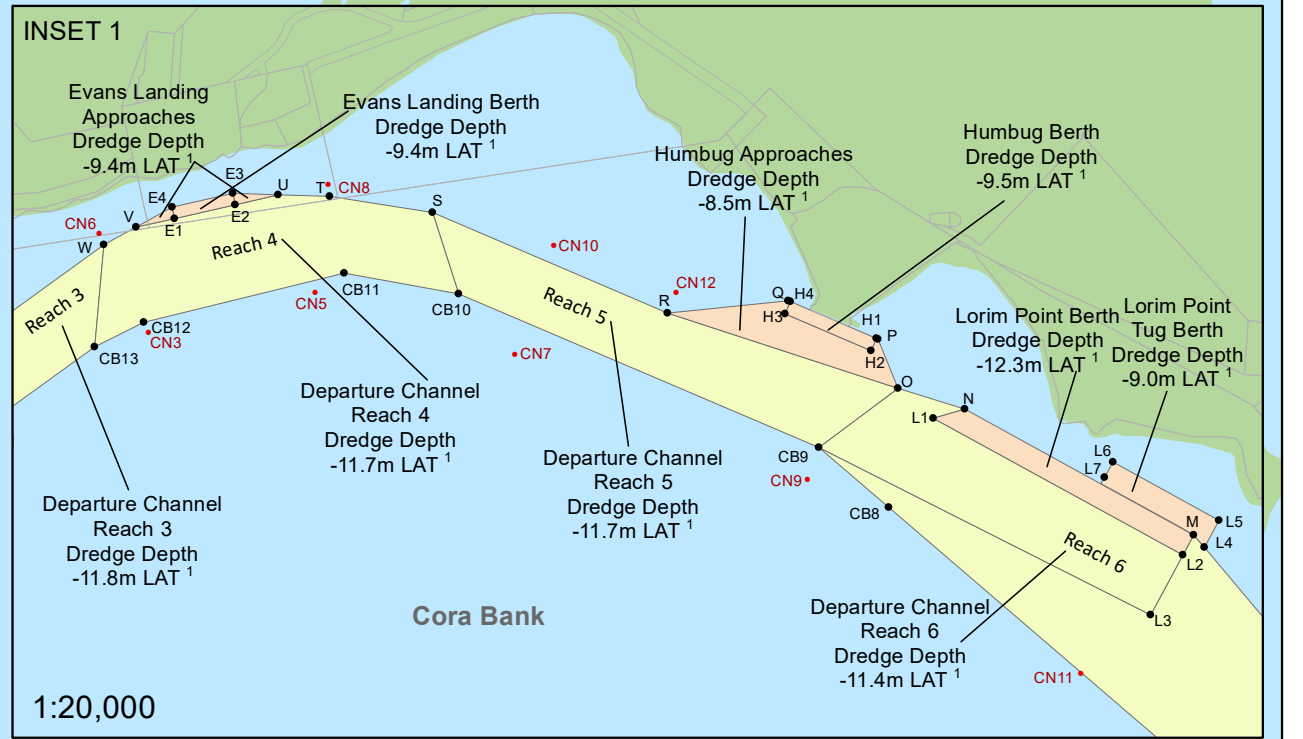
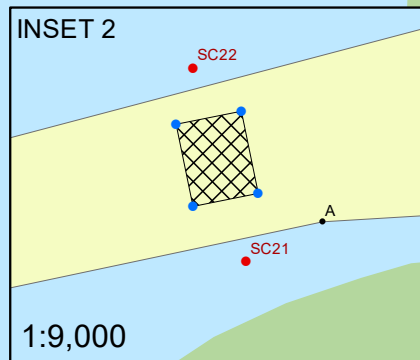
BUOY	EASTING	NORTHING	description
AB1	571309	8600412	2000m radius

### Dredge Turning Circle<sup>2</sup>

Point	Easting	Northing	description
DTC	584845.46	8598553.95	500m radius

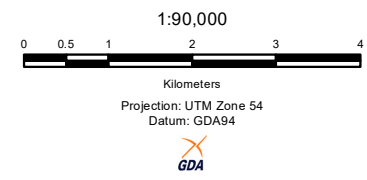


**Total Maintenance Dredge Area: 622 ha**



### Legend

	Maintenance Dredging Area (approx 622ha)		Albatross Bay DMPA
	Berth Areas		Cultural Heritage Site (No Dredging)
	Cadastral Boundaries		



**Notes:**  
 1. Design depths are shown. An additional allowance of an average 600mm of overdredging depth must be added to all dredge depths shown.  
 2. Coordinates listed as Easting and Northing. (GDA94 Zone 54)  
 3. Dredging depth transition - Bottom of the batter is the deeper section of transitions which occur within the dredge footprint

**ATTENTION - PLEASE READ CAREFULLY THIS IMPORTANT DISCLAIMER NOTICE**

5. NQBP expressly disclaims and excludes, to the extent it is lawfully able:-  
 (a) all warranties, express or implied, relating to the Maps or the use of, or reliance upon, the same; and  
 (b) all and all liability to any person, whether a purchaser, reader or user of the Maps or otherwise (an Affected Person) for:  
 (i) the death of or injury to; or  
 (ii) damage to any property of; or  
 (iii) losses, claims, demands, actions, proceedings, damages, costs or expenses (including, without limitation, consequential losses, loss of profits, loss of use, loss of efficiency, pure economic loss and any similar losses) or other liability whatsoever suffered or incurred by any Affected Person, or anyone claiming under an Affected Person, arising directly or indirectly out of use of, or reliance upon, the Maps or any of them, or any part thereof.

6. As to any term implied by statute into your use of the Maps and which statute precludes the exclusion of such term, the liability of NQBP for any breach of that term is limited (so far as lawfully can be) to the re-supply of the Maps.  
 7. Subject to the provisions of the Copyright Act 1968 (Cth), the Maps must not be re-produced for any purpose whatsoever without the prior written consent of NQBP.

**BULK PORTS CORPORATION**  
 - GIS Section -