

Port of Hay Point Security Advice



In the event of a heightened security level being declared at the Port of Hay Point, additional security measures will be put in place on both the land and sea operational areas. Boat skippers operating in the vicinity of the port will need to be mindful to always observe restricted areas on the water.

Security levels

The Australian government and the maritime industry internationally have adopted the following three security levels. During periods of elevated security risk, the MARSEC level may be increased. This requires maritime industry participants to implement additional security measures.

MARSEC 1 - Default security level

MARSEC 1 is the default level at which ships, ports and offshore facilities normally operate. This level requires all maritime industry participants to maintain the minimum appropriate security measures at all times.

MARSEC 2 - Heightened risk of a security incident

MARSEC 2 indicates there is a heightened risk of a security incident. Ships, ports and offshore facilities and associated maritime industry participants must implement appropriate additional protective security measures. They must maintain these measures for a period of time.

MARSEC 3 - A security incident is probable/imminent

MARSEC 3 applies when there is a probable or imminent risk of a security incident, even though it may be not possible to identify the specific target. Ships, ports and offshore facilities and associated maritime industry participants must implement further protective security measures. They must maintain these measures while the incident is probable or imminent.

The Federal Government will notify ports when the security level has been raised, based on intelligence advice.

Public access land-side

Dalrymple Bay Coal Terminal, Hay Point Services Terminal and the Half Tide Tug Harbour all have security gates. Unauthorised public access is not allowed beyond these gates or the perimeter fences.

Access to the viewing area under the NQBP building at the top of Horyu Maru Drive may be restricted at heightened security levels.

Public access water-side

Half Tide Boat Ramp

Under normal circumstances, there will be no restriction on the boat ramp. Restrictions may apply at Level 2 based on the threat and at Level 3 it would most likely be closed completely.

Half Tide Tug Harbour (Tug Enclosure)

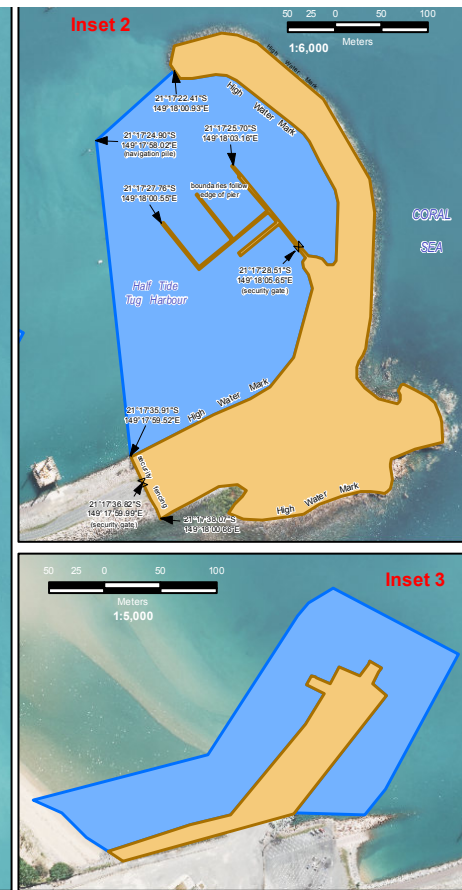
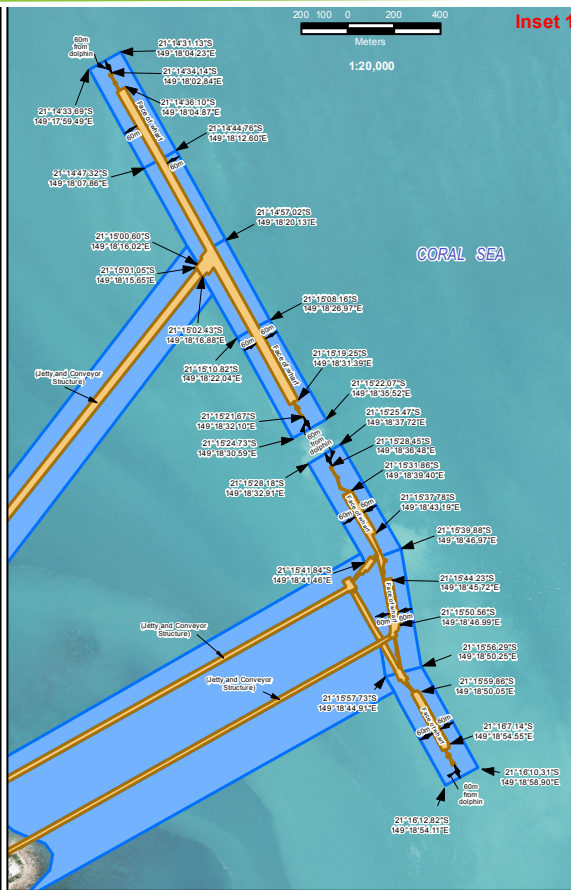
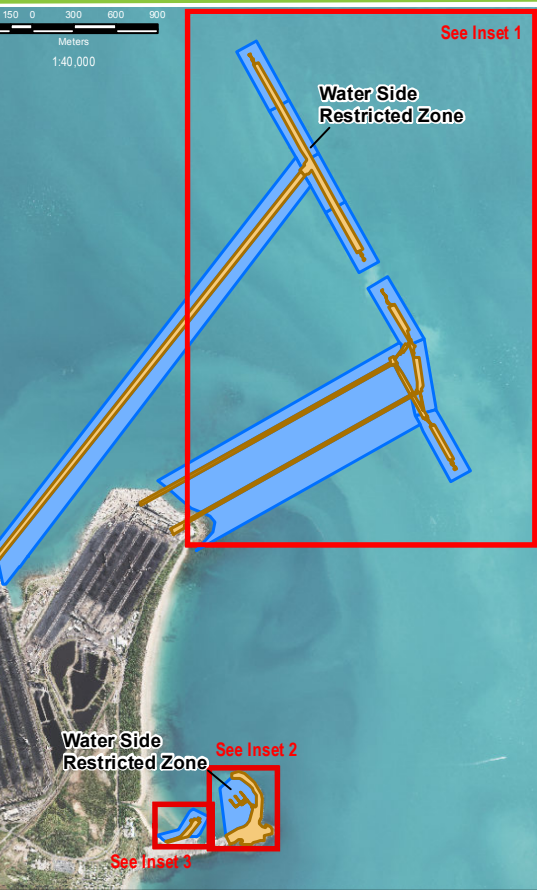
No access to the waters inside the tug enclosure exists at any level for any unauthorised vessel. Signs and Special Marks have been posted identifying the restricted area (see water-side restricted zone on map over the page).

Coal Terminal Jetties and Wharves

Unauthorised vessels are currently not allowed to pass under, or moor under, either the coal terminal jetty or wharf structures at Hay Point, staying 50 metres clear of the structures. This has been the case for some time and was originally prompted by the safety concerns of the terminals.

Legend

- Land-side Restricted Zone
- Water-side Restricted Zone



This restriction remains and will be enforced.

At security levels 2 and 3, new security provisions will be activated around the facilities and unauthorised vessels will have to stay at least 60 metres clear of the wharves. Signs will be posted at the boat ramp when this security level comes into force.

To support Maritime Safety and Security, NQBP, as the Port Authority, implement Port Rules under the *Transport Infrastructure Act (QLD) 1994*.

Breaching port security zones

Breaches of port security zones would jeopardise the security and operation of the port, and anyone caught breaching the rules faces serious fines.

All of the operators at the port and the enforcement agencies have been instructed to be on the look out for breaches and will adopt a zero tolerance.

The Hay Point port facilities are critical to the interests of Queensland and Australia and the security of these facilities will be enforced. Breaches of security access restrictions may bring fines of up to \$5,000.

Community support of port security

Apart from observing the access restrictions, the general public and boat owners are asked to be on the look out for any suspicious behaviour. This should be reported to port and terminal authorities. Your co-operation would be much valued.

These security measures have been implemented Australia-wide and NQBP, the Hay Point operators, as well as the maritime industry generally, ask for your understanding and assistance in meeting our security obligations.

Contact

For more information, please contact Port Security on **07 4943 5209** in the first instance or **07 4955 8174**.

HAY POINT • MACKAY • ABBOT POINT • WEIPA