

DBCT 8X Expansion Studies & Assessment Process Update

Community Reference Group
November 2020



DALRYMPLE BAY INFRASTRUCTURE
MANAGEMENT PTY LTD



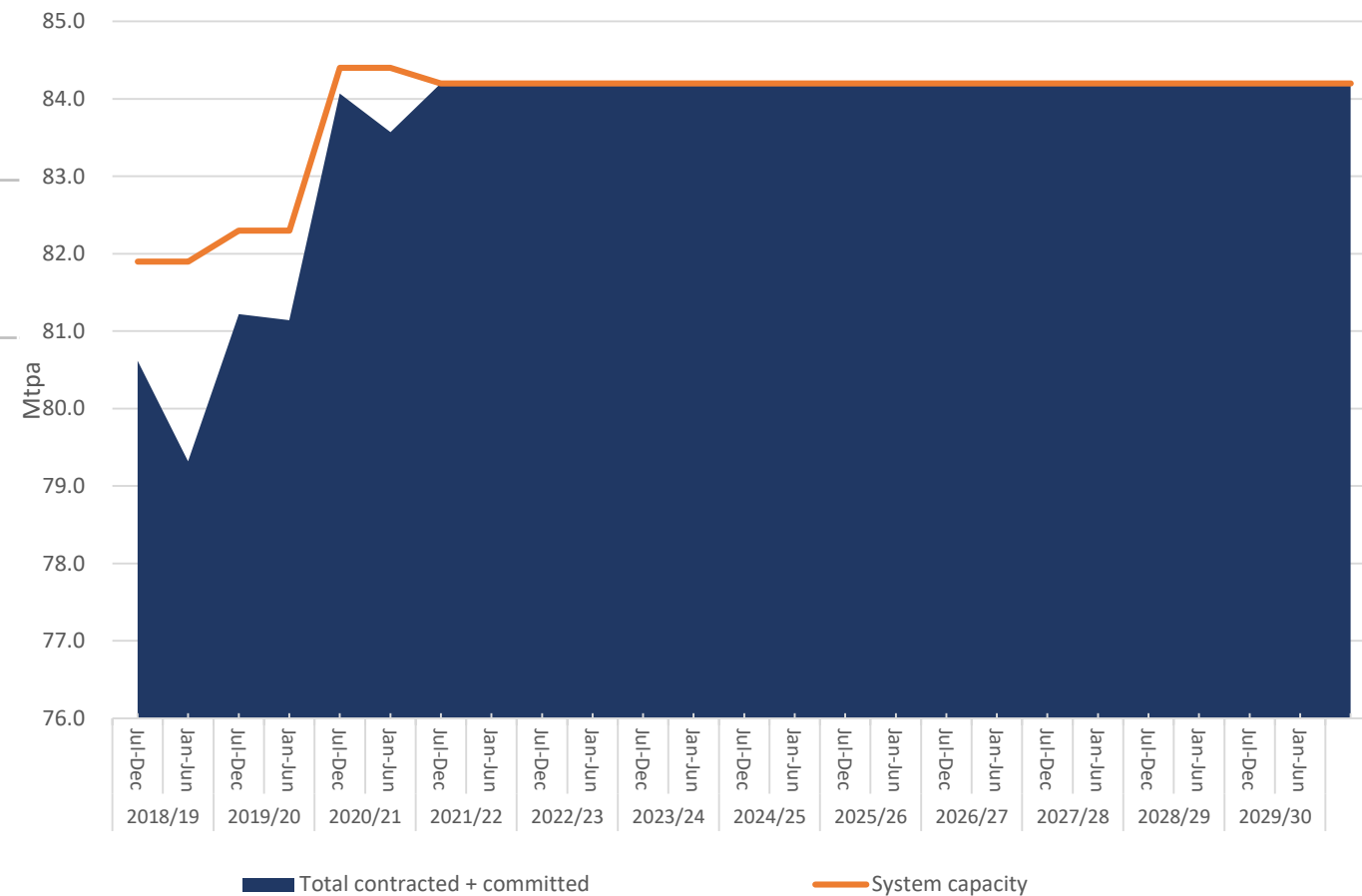
DBCT contract situation

Current Contract Situation

- DBCT to be contracted at 84.2 Mtpa long term
- Some near term capacity available

Feasibility Studies – Access Seeker Support

- Over the last 12 months DBCTM has been working through the expansion processes in the AU
- In May, 5 Access Seekers entered into Standard Underwriting Agreements with DBCTM underwriting the Pre-Feasibility Study (FEL2) for the full 8X Expansion up to 13.3Mtpa
- In the first week of June 2020, DBCTM commenced Pre-feasibility Studies for the 8X Project



Expansion Scope – 4 Expansion Steps to achieve maximum capacity for existing footprint

8X Phase 1



8X Phase 2



8X Phase 3



8X Phase 4



Existing Footprint Capacity:

- The existing footprint capacity is limited to 97.5Mtpa

8X Expansion Summary

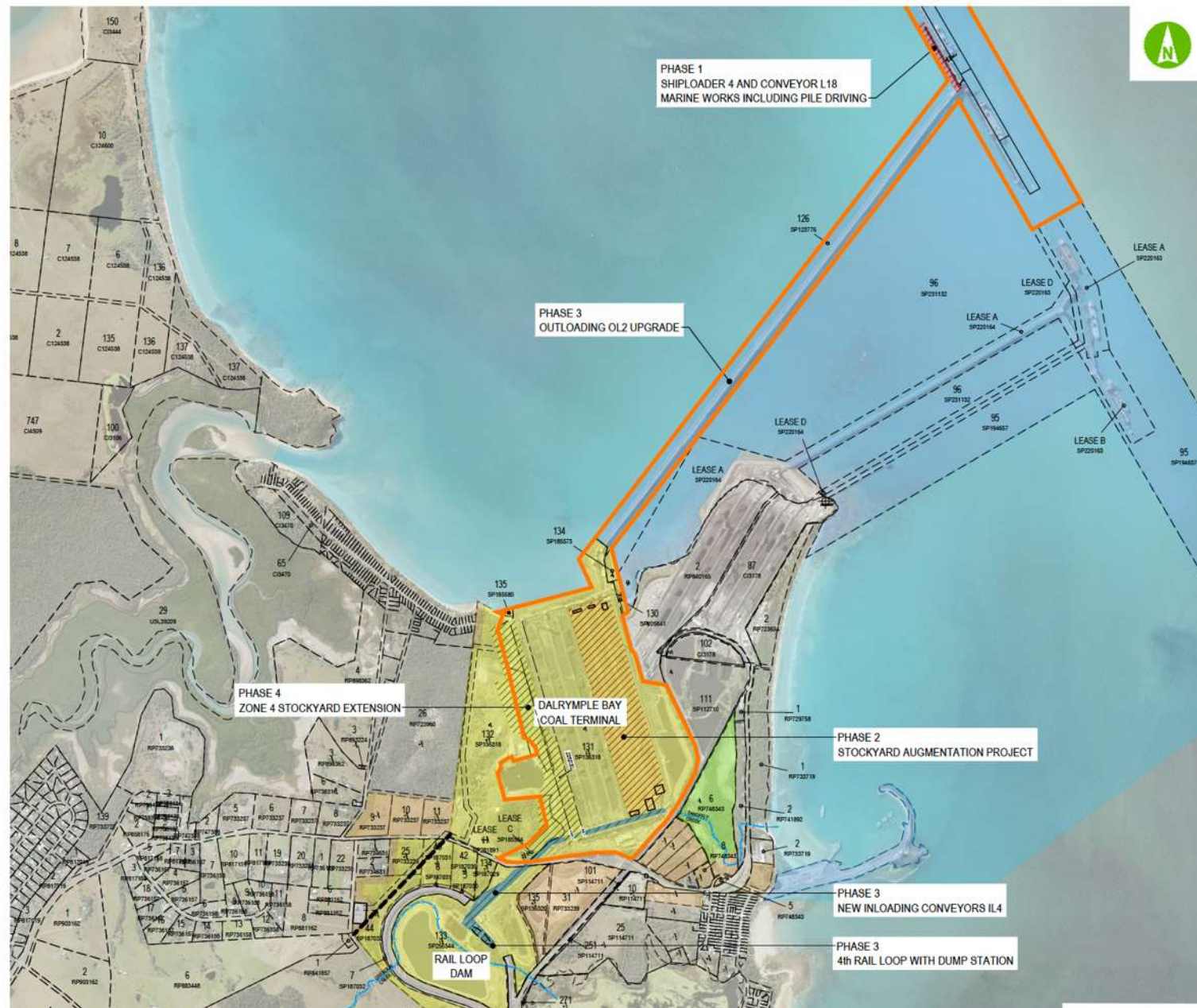
Expansion Phase	Anticipated Scope of Works - 8X Project		Terminal capacity (Mtpa)
	Onshore (Landside)	Offshore (Marine)	
8X-1	Onshore: <ul style="list-style-type: none"> Improve outloading optimisation through augmented yard machinery controls to increase reclaim rate Stockyard to surge bin string control improvements etc 	Offshore: <ul style="list-style-type: none"> Installation of new Shiploader 4 - including construction of new support structure behind Berth 3 (including approx. 20 marine piles) 	Additional (+4.3)
8X-2	Onshore: Stockyard Augmentation Project (SAP) including: <ul style="list-style-type: none"> Upgrades of existing yard equipment and conveyors upgrades in eastern stockyard (Stackers ST2, ST1A, reclaimers R2/RL3 and conveyors S6, S6A, S5) Heightened yard walls in stockyard Zone reconfiguration of stockyard 	NIL	Additional (+2.7)
8X-3	Onshore: <ul style="list-style-type: none"> Addition of inner rail loop, rail receival dump station and in-loading conveyor (RRP4, IL4) IL2 upgrade Shutdown IL1 Upgrade to existing outloading conveyor (OL2) (above existing wharf structure only - NO 'in-marine' works) 	NIL	Additional (+3.5)
8X-4	Onshore: <ul style="list-style-type: none"> Zone 4 project – completion of Row 8 with western walls, new stacker (ST5) for row 8 and new reclaimer RL4 (replace RL2) New western access gate Relocated Office Complex 	NIL	Additional (+2.8)
New Terminal Capacity			97.5Mtpa

8X Expansion Summary (Capital Cost Forecast \$1.2b over 4 phases)



Anticipated Expansion timing

Milestone	By
Pre-feasibility FEL2 to be completed	Dec 2020
Subject to Access Seekers underwriting Feasibility, Commence FEL3	Feb 2021
QCA Price Ruling	June 2021
Feasibility Study (FEL3) complete	March 2022
Expansion Approval	June 2022
First Coal from early phases	July 2024
8X Expansion Complete	July 2027



All phases within existing footprints
(Capital Cost Forecast \$1.2b over 4 phases)

Assessments Required

8X Project will require review at both Commonwealth and State Government levels

Commonwealth:

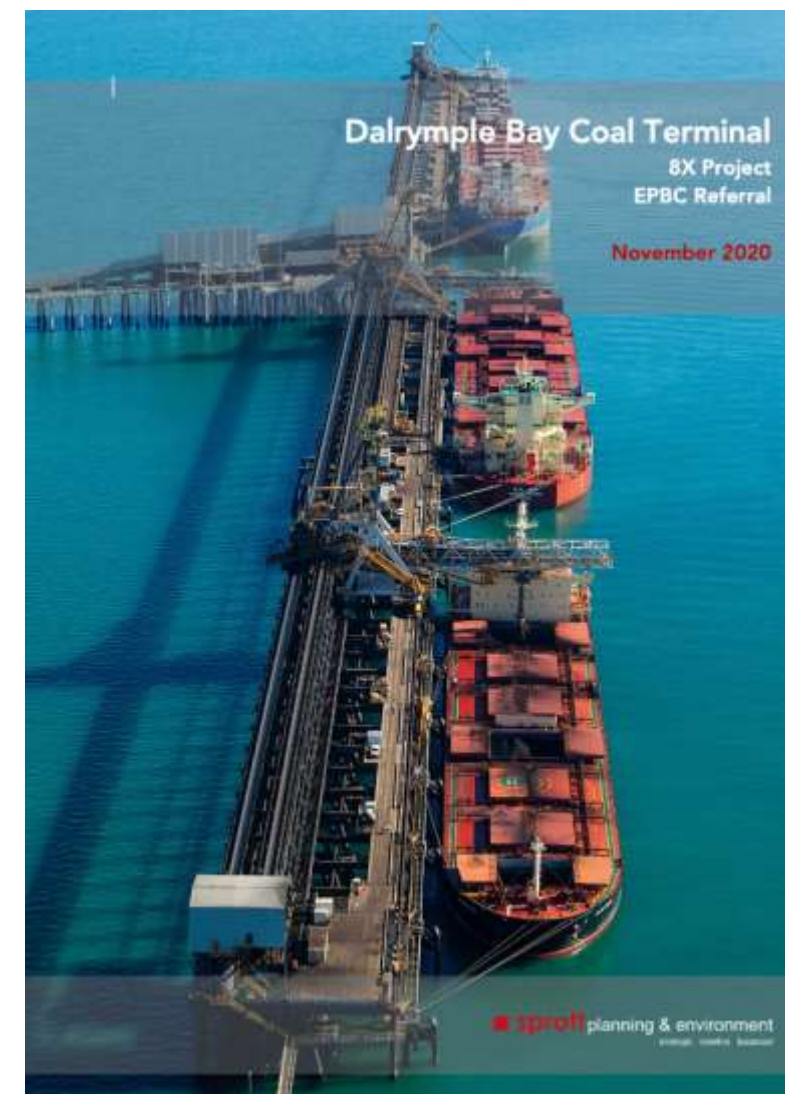
Environment & Biodiversity Conservation Act, 1999

- 'Referral' of project likely to Commonwealth - late November
- DBCT seeking 'non-controlled action'

State:

The proposal will be subject to a range of relevant State legislation including:

- *Transport Infrastructure Act 1995*
- *Coastal Protection and Management Act 1995*
- *Environmental Protection Act 1994*
- *Vegetation Management Act 1999*
- *Fisheries Act, 1994*
- *Aboriginal Cultural Heritage Act 2003*



Advisors:

A number of specialist consultants have been used to undertake technical work & help prepare applications:



Role: Project Management & Consolidated Reporting (Commonwealth & State), Ecological Constraints Analysis (Desktop)



Role: Marine Survey



Role: Ecological Constraints Analysis (Field Verification)



Role: Acoustics and Vibration



Role: Air Quality

Consultation / Engagement

Consultation / Engagement with a range of stakeholders include:

- Community Reference Group
- Community Working Group
- Regional Council
- State Members
- Federal Members
- Indigenous Group
- Neighbours / Supply Chain
- NQBP

Consultation will be undertaken prior to lodgement and throughout assessment processes.



Key 'Take-Aways'

It is important to remember the proposed 8X development:

- **IS LOCATED AT a designated 'Priority Port'** – under the Queensland Government's *Sustainable Ports Development Act, 2015* - and a **'Relevant Port'** as requested by the National Ports Strategy
- **IS WHOLLY WITHIN 'Strategic Port Land'** as per the *Transport Infrastructure Act, 1994*
- **IS WHOLLY WITHIN** existing DBCT footprints and leased areas (waterside and landside)
- **DOES NOT** involve either Capital or Maintenance Dredging
- **DOES NOT** involve development within the Great Barrier Reef Marine Park
- **INCLUDES the Zone 4 / Row 8 phase** - which has already passed through Commonwealth and State assessment processes (facilitating expansion from 85Mtpa to 89Mtpa).



Also of note.....

DBCT Sustainability Strategy released....

Our Principles

Our sustainability principles have been defined to underpin all decision-making and future planning, to balance core business goals with our responsibilities.

We are committed to:



ensuring the safety and wellbeing
of our **people**



protecting and monitoring the **environment**
in which we operate



conducting our **business** according to the
highest ethical and performance standards



supporting our **community** through
engagement and investment



Dalrymple Bay Coal Terminal
Sustainability Strategy 2020

FOCUS AREAS

Safety

Positive Culture and Leadership

Proactive Communication and Innovative Thinking

Ongoing Learning and Development

Health and Wellbeing

Workforce for the Future



People

Encourage a positive culture of safety, diversity, transparency, innovative thinking and empowerment in our people.

FOCUS AREAS

Healthy Reef and Ecosystems

Water Management

Climate Change and Renewable Energy Transition

Managing Terminal Footprint

Waste Management

Clean and Safe Shipping



Environment

Leading in environmental management, acknowledging our unique location in the World Heritage Area and proximity to neighbouring communities.

People



FOCUS AREA	ACTION
Safety	Continue to embed a positive and proactive safety culture.
Positive Culture and Leadership	Drive positive and proactive leadership.
Proactive Communication and Innovative Thinking	Ensure open, clear and transparent pathways to share information and ideas.
Ongoing Learning and Development	Empower employees by encouraging opportunities to learn and thrive.
Health and Wellbeing	Encourage holistic wellbeing for all individuals at DBCT.
Workforce for the Future	Consider the skills of the present workforce and the requirements for the future.

Environment



FOCUS AREA	ACTION
Healthy Reef and Ecosystems	Consolidate, communicate and improve the scope of environmental monitoring programs.
Water Management	Develop an all-encompassing approach to water management.
Climate Change and Renewable Energy Transition	Map out our approach to minimising emissions and consider mitigation, resilience and adaptation measures.
Managing Terminal Footprint	Enhance environmental impact management through a review of current practices, identification of improvement opportunities and appropriate communication.
Waste Management	Minimise waste generation and address sustainable procurement.
Clean and Safe Shipping	Influence clean, safe and efficient shipping.

Community and Partnerships

Connecting with the community and partners to drive positive change.



FOCUS AREAS

Stakeholder Engagement and Communication

Community Investment, Sponsorship and Partnerships

Sustainability Reporting and Education

Indigenous and Cultural Relationships

Industry Outreach

Research and Reef Partnerships

Business Performance

Delivering prosperity through optimising the terminal and supply chain performance.



FOCUS AREAS

Terminal Efficiencies

Change Management and Risk Management

Long-term Prosperity

Supply Chain Efficiency

Sustainable Procurement

Asset Management

Business Performance



FOCUS AREA	ACTION
Terminal Efficiencies	Adopt an innovative, collaborative and strategic approach to improve terminal efficiencies.
Change Management and Risk Management	Standardise the approach to change management and review the current approach to risk management.
Long-term Prosperity	Robust, evidence-based long-term planning.
Supply Chain Efficiency	To provide leadership and collaborate with supply chain stakeholders.
Sustainable Procurement	Improve communication and processes for procuring goods, materials, services and labour.
Asset Management	Develop a holistic approach to asset management.

Community and Partnerships



FOCUS AREA	ACTION
Stakeholder Engagement and Communication	Improve connection with local community and stakeholders.
Community Investment, Sponsorship and Partnerships	Develop a long-term strategic approach to supporting the community.
Sustainability Reporting and Education	Actively review and report on sustainability progress.
Indigenous and Cultural Partnerships	Connect with indigenous communities.
Industry Outreach	Connect with local and global industry partners.
Research and Reef Partnerships	Connect with research partners and promoters of reef health.