



## **Port of Abbot Point Ambient Coral Monitoring Surveys: 2019-2020**

Ayling T, Ayling A, and Chartrand KM

Report No. 20/45



# Port of Abbot Point Ambient Coral Monitoring Surveys: 2019-2020

## A Report for North Queensland Bulk Ports

Report No. 20/45

Ayling T, Ayling A, and Chartrand KM

[Centre for Tropical Water & Aquatic Ecosystem Research](#)  
(TropWATER)

James Cook University  
Townsville

**Phone :** (07) 4781 4262

**Email:** TropWATER@jcu.edu.au

**Web:** [www.jcu.edu.au/tropwater/](http://www.jcu.edu.au/tropwater/)



SEA RESEARCH



**Information should be cited as:**

Ayling T, Ayling A, and Chartrand K. 2020. Port of Abbot Point Ambient Coral Monitoring Surveys: 2019-2020. Centre for Tropical Water & Aquatic Ecosystem Research (TropWATER) Publication 20/45, James Cook University, Cairns.

For further information contact:

Centre for Tropical Water & Aquatic Ecosystem Research (TropWATER)

James Cook University

[Katie.Chartrand@jcu.edu.au](mailto:Katie.Chartrand@jcu.edu.au)

PO Box 6811

Cairns QLD 4870

This publication has been compiled by the Centre for Tropical Water & Aquatic Ecosystem Research (TropWATER), James Cook University.

© James Cook University, 2020.

Except as permitted by the *Copyright Act 1968*, no part of the work may in any form or by any electronic, mechanical, photocopying, recording, or any other means be reproduced, stored in a retrieval system or be broadcast or transmitted without the prior written permission of TropWATER. The information contained herein is subject to change without notice. The copyright owner shall not be liable for technical or other errors or omissions contained herein. The reader/user accepts all risks and responsibility for losses, damages, costs and other consequences resulting directly or indirectly from using this information.

Enquiries about reproduction, including downloading or printing the web version, should be directed to [Katie.Chartrand@jcu.edu.au](mailto:Katie.Chartrand@jcu.edu.au)

**Acknowledgments:**

This project was funded by the North Queensland Bulk Ports Corporation Ltd. We wish to thank the Sea Research staff for their valuable assistance in the field and data processing.

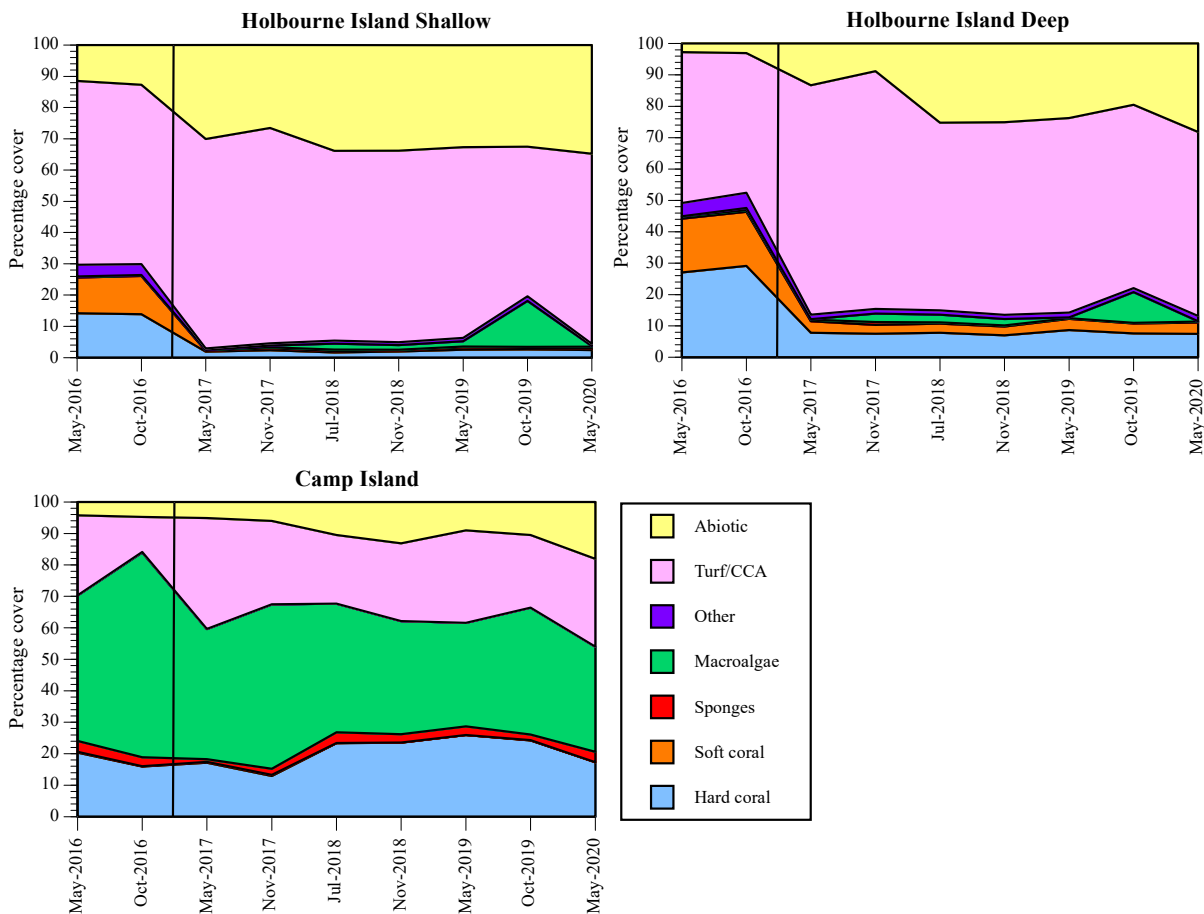
## KEY FINDINGS

1. Coral monitoring at Holbourne Island and Camp Island was completed in October 2019 and May 2020, the latest surveys part of a bi-annual ambient monitoring program. The 2019/20 results are compared with data collected since May 2016, the program's inception, for the Port of Abbot Point to measure benthic cover, coral health, sedimentation and coral recruitment.
2. Macroalgae were only substantial on the Camp Island location. Cover here fluctuated from 33% up to 40% and back down to 33% over the course of the 2019/20 surveys. A temporary peak in *Padina* macroalgae on Holbourne Island during the October 2019 survey saw macroalgae reach a grand mean cover of 12.3%, higher than any previous record at Holbourne before returning to previous levels.
3. The Holbourne Island locations were severely impacted by Cyclone Debbie in late March 2017 with a mean 77% reduction in hard coral cover. Coral communities in the Holbourne Island monitoring locations have been very slow to recover since this impact, with a grand mean of 4.9% coral cover in October 2017 and only 5.0% cover in May 2020. The slow recovery of hard coral communities in these fringing reef locations since Cyclone Debbie is a cause for concern.
4. All locations were affected by a severe coral bleaching episode in early 2020 that affected much of the greater central and southern Great Barrier Reef. During May 2020 surveys, 9% of the Holbourne shallow location, 30% of the Holbourne deep location, and 32% of Camp Island corals were bleached.
5. Hard coral cover decreased significantly on Camp Island over the three 2019/20 surveys from a mean of 26.0% cover to 17.3% cover due to coral bleaching mortality and coral disease.
6. Coral community composition was dominated by *Montipora* and faviid corals on the shallow Holbourne sites; *Acropora*, *Montipora*, faviid and poritid corals on the deep Holbourne sites; and *Acropora* and *Montipora* corals on the Camp Island sites.
7. New coral recruits were recorded at low densities on Holbourne Island for the third consecutive year despite plenty of suitable free space while recruit densities were relatively high on Camp Island.
8. Sediment levels on corals were relatively low on Holbourne Island and higher on Camp Island. A grand mean of 33% of corals had sediment on the surface at Camp Island with mean sediment depth of 0.23 mm during the May 2020 survey. These differences reflect the more inshore, shallow environment of Camp Island. Sediment levels during the May 2020 survey were the highest recorded since July 2018, probably due to bleaching stress of the coral colonies reducing sediment removal capacity.
9. Coral disease affected a mean of 0.4 colonies per 40 sqm at these locations and the disease rate per unit of coral cover was similar for all locations. Crown-of-thorns sea stars moved in to one of the Holbourne deep sites between November 2018 and May 2019 where they damaged over 6 colonies per 40 sqm. This outbreak is continuing.
10. Due to the extremely low hard coral cover at the shallow Holbourne sites (ca. 2%), we recommend relocating monitoring effort to the under-represented northeastern quadrant of the island at the same depth contour as the Holbourne deep sites (5m). This relocation of sites will occur during October 2020 surveys.
11. Data from these surveys was used to determine a coral condition index score under the Mackay Whitsunday Regional Report Card. The regional score was rated 'very poor' during the October 2019 survey due to the pulse of macroalgal cover at Holbourne but increased to the 'poor' range by May 2020 when macroalgal cover decreased.

## IN BRIEF

Coral monitoring sites were set up on three locations in the vicinity of the Port of Abbot Point in mid-2016 as part of North Queensland Bulk Ports ambient reef monitoring program. These locations were shallow depth stratum on Holbourne Island (~2m below LAT), deep stratum on Holbourne Island (~5m below LAT) and Camp Island (~2m below LAT). Four sites of five permanently marked 20 m survey transects were set up at each location along the required depth contour. These surveys were instigated in order to gain a greater understanding of ambient conditions, and the drivers of these conditions, which would also allow for a greater capacity to manage potential influences during periods of port related activities such as dredging. The Australian Institute of Marine Science initially established these monitoring sites using their fringing reef survey protocols and carried out three further surveys during 2016/2017. TropWATER, in association with Sea Research, continued this program using the same sites and transects in 2018-2020.

Holbourne Island is a mid-shelf fringing reef about 30 km offshore from Bowen and 30 km from the Port of Abbot Point. Camp Island is a shallow inshore reef 20 km west of the Port that is only 2.5 km offshore from the mouth of the Elliot River.



**Figure i.** Summary of changes in the major benthic categories at the three Abbot Point locations. Graphs show cumulative percent cover from all ambient surveys. Solid vertical line indicates the time of Cyclone Debbie

Holbourne Island is a more mid-shelf location and reefs around this island did not support stands of *Sargassum* macroalgae as is usually the case on inshore fringing reefs. However, Holbourne recorded a short-lived pulse in the cover of *Padina* macroalgae during the October 2019 survey with a mean cover of 12.3%,

which had completely disappeared by the May 2020 survey. Camp Island had patchy cover of a dense *Sargassum* forest, especially at the East 1 site (Fig. 3), with grand mean macroalgal cover of around 36%. Macroalgal cover fluctuated significantly on Camp Island over these three ambient surveys from 33% up to 40% and back down to 33% cover again, probably due to normal seasonal nutrient fluctuations. Benthic communities are unlikely to be impacted by the low levels of macroalgal cover recorded on Holbourne Island but may be damaged by the lush algal communities on Camp Island.

The Holbourne Island survey locations were severely impacted by Cyclone Debbie in late March 2017. Extensive physical damage from the wave action generated by this severe category 4 cyclone devastated coral communities on the SW face of Holbourne Island where all the survey sites were located. Mean hard coral cover on the shallow Holbourne Island location immediately after the cyclone was just over 2% during the May 2017 ambient survey, down from 14% before the cyclone. In the deep Holbourne stratum mean coral cover was less than 8% following the cyclone, down from 29%. Camp Island reef communities, although only 50 km west of Holbourne, were minimally damaged by Cyclone Debbie and mean coral cover actually increased slightly following the cyclone. The proximity of Camp Island to the coastline and the unusually shallow depths around the island (<5m), may have minimised impacts compared to Holbourne where wider fetch and deeper water (25 m at the base of the reef slope) led to the development of 10+ m wave height during this cyclone.

The reefs in this region experienced high temperatures during the first three months of 2020 and this caused a severe coral bleaching episode. On the Holbourne shallow location 9% of coral cover was bleached at the time of the May 2020 survey, with 30% of corals bleached in the Holbourne deep location and 32% on Camp Island. Broad-scale surveys of the GBR during this warming event found widespread bleaching both at inshore and mid-shelf reefs, which was most prevalent in the central and southern sectors (Townsville to Gladstone; ARC Centre of Excellence for Coral Reef Studies).

Hard coral cover did not change significantly in the Holbourne locations during the 2019/2020 period but decreased from 26% to 17% on Camp Island, primarily due to bleaching driven reductions in the cover of the dominant *Acropora* species.

Coral community composition was different at the three locations. In the shallow Holbourne location *Montipora* and faviid corals were dominant, accounting for 66% of hard coral cover between them. No coral group was dominant in the deep Holbourne location with *Acropora*, *Montipora*, faviids and poritids all accounting for 15-30% of coral cover. On Camp Island fringing reefs *Acropora* and *Montipora* corals together made up more than 85% of coral cover. The proportion of *Acropora* to *Montipora* changed on Camp Island reefs over these three surveys, with *Acropora* decreasing more than *Montipora* due to higher bleaching mortality.

Sediment levels on living hard corals were low on both Holbourne Island locations during the two 2018 surveys (mean of only 1% of corals with sediment) but was significantly higher during the May 2019 survey when about 10% of corals had surface sediment. Sediment levels had increased again by May 2020 to 15% of corals with surface sediment. This increase was probably due to many of the corals suffering bleaching stress. More corals had surface sediment on the inshore Camp Island location, with 5-33% of corals recorded with surface sediment and an increase in both number of corals with sediment and sediment depth over the last three surveys, again probably due to bleaching stress of the corals. Sediment deposition on living coral colonies can cause patches of mortality but only a very small number of corals were affected during these surveys with a grand mean of around 0.3 coral colonies per 40 sqm partially damaged by sediment deposition. Physical damage to corals from cyclonic events is more than an order of magnitude higher than any sedimentation damage.

Disease sometimes affects hard coral colonies and may cause partial or occasionally total mortality. Only a small number of coral colonies are affected at any one time and disease levels are usually higher in summer when the water is warmer and lower during the winter months. A mean of about 0.4 coral colonies per 40

sqm had been affected by disease during these surveys and the rate of disease per unit of coral cover was similar for all three locations. At Camp Island almost all disease was atramentous necrosis of *Montipora* colonies and this caused a slight but significant decline in *Montipora* cover over at least two of the three surveys covered here. In general, the impact of disease on hard corals is at least an order of magnitude less than physical cyclone damage.

A small crown-of-thorns sea star aggregation was impacting corals in the West deep Holbourne location (Fig. 2) during these three surveys and had damaged many corals at both of the survey sites.

Coral recruitment was low on the Holbourne sites during these surveys with mean recruit density of around 1 per sqm, possibly due to the relatively isolated position of this island in the shipping channel 40 km inside the main body of mid-shelf reefs and 30 km from the nearest inshore fringing reefs. Recruit densities were higher on the Camp Island sites where a mean of about 2 recruits per sqm was recorded. As is often the case on near-shore reefs, *Turbinaria* corals were common in the coral recruit population at Camp Island, accounting for 22% of all recruits recorded. In contrast *Turbinaria* corals only made up about 1% of the overall coral community. Acroporid corals, on the other hand, made up 45% of the recruit population but 85% of the overall coral community. On Holbourne Island a range of different coral groups were present in both the recruit population and the overall coral community.

The slow rates of coral community recovery on Holbourne Island following Cyclone Debbie, both from coral growth and recruitment, is cause for concern. Prior to the summer 2020 coral bleaching event, reefs around Camp Island appeared healthy and growing apart from periods of high algal growth and smothering at some sites. The significant May 2020 bleaching, however, caused a reduction in hard coral cover of 33% on Camp Island. Further mortality from this event is likely to be recorded during the next ambient survey.

Due to the low coral cover at the shallow Holbourne Island sites, we recommend they shift to areas of reef surrounding the island that are currently under represented in the program and at the same depth contour as the deep Holbourne sites. This move would also better align coral monitoring across both Abbot Point and Mackay/Hay Point locations.

## TABLE OF CONTENTS

<b>KEY FINDINGS .....</b>	<b>i</b>
<b>IN BRIEF .....</b>	<b>ii</b>
<b>1 INTRODUCTION.....</b>	<b>5</b>
1.1 Project Background .....	5
1.2 Objectives of Survey .....	5
<b>2 METHODS .....</b>	<b>9</b>
2.1 Abbot Point Locations .....	9
2.2 Survey Period.....	10
2.3 Benthic Line Intercept Surveys .....	11
2.4 Sediment Deposition on Corals .....	11
2.5 Damaged, Diseased, or Bleached Coral Colonies .....	12
2.6 Coral Recruitment.....	12
2.7 Analysis .....	12
<b>3 RESULTS .....</b>	<b>14</b>
3.1 Climatic Conditions .....	14
3.1.1 Rainfall and River Flows .....	14
3.1.2 Cyclones .....	16
3.1.3 Sea Water Temperatures .....	17
3.2 Benthic cover during the last three ambient surveys .....	18
3.4 Coral Bleaching .....	26
3.5 Sediment Deposition on Coral Colonies .....	28
3.6 Sediment Damage and Disease in Coral Colonies .....	31
3.7 Other Coral Health Issues .....	33
3.8 Coral Recruitment Patterns .....	34
3.9 Coral Community Indicators .....	36
3.10 Benthic Community Images.....	36
<b>4 DISCUSSION .....</b>	<b>46</b>
4.1 Benthic Cover during the last three Ambient Surveys .....	46
4.2 Sedimentation and Coral Damage.....	47
4.3 Other Sources of Coral Mortality.....	47
4.4 Implications of Coral Assessment.....	48
<b>5 REFERENCES.....</b>	<b>49</b>



## FIGURES

<b>Figure i.</b> Summary of changes in the major benthic categories at the three Abbot Point locations.....	ii
<b>Figure 1.</b> Location of the Port of Abbot Point showing the position of the Port and the Holbourne Island and Camp Island ambient coral monitoring sites.....	6
<b>Figure 2.</b> Holbourne Island showing the position of the shallow strata coral monitoring sites. The equivalent deep sites are all about 50 m down slope from the shallow sites.....	7
<b>Figure 3.</b> Camp Island showing the position of the four coral monitoring sites.....	8
<b>Figure 4.</b> Daily rainfall measured at the Bowen Airport with inset of change in rainfall as a proportion of the long-term average. ....	15
<b>Figure 5.</b> Don River daily discharge rates (mega litres) measured at Reeves, 23 km upstream from the river mouth with inset of change in riverflow as a proportion of the long-term average. ....	15
<b>Figure 6.</b> A. Daily rainfall measured at Gathulungra, 7 km upstream from the Elliot River mouth, B. Elliot River discharge at Gathulungra.....	16
<b>Figure 7.</b> A) Maximum daily temperature at Holbourne Island and Camp Island water quality monitoring sites. Arrows indicate approximate survey dates. B) Central GBR 5 km regional virtual station time series graphs showing the significant Feb/March heating event in the region. ....	17
<b>Figure 8.</b> Changes in benthic composition in the three locations between May 2016 and May 2020. ....	18
<b>Figure 9.</b> Changes in percentage cover of macroalgae. ....	19
<b>Figure 10.</b> Changes in the cover of total hard coral. ....	21
<b>Figure 11.</b> Coral community composition at the three locations for the last three ambient surveys. ....	22
<b>Figure 12.</b> Changes in the cover of coral groups: <i>Acropora</i> corals and <i>Montipora</i> corals. ....	23
<b>Figure 13.</b> Changes in the cover of coral groups: Agariciid corals and Faviid corals.....	24
<b>Figure 14.</b> Changes in the cover of benthic groups: Poritid corals and Total Soft corals.....	25
<b>Figure 15.</b> Changes in Density of Bleached and Partially Bleached Hard Coral Colonies.....	27
<b>Figure 16.</b> A. Bleached <i>Montipora</i> colonies on Camp Island along with some bleached <i>Acropora</i> colonies and a few corals that have died from bleaching. B. Bleached staghorn <i>Acropora</i> corals with a healthy colony (lower right) and dead colonies (background).....	28
<b>Figure 17.</b> Changes in Number of Corals with Sediment Load and Sediment Depth.....	30
<b>Figure 18.</b> Changes in density of sediment damaged and diseased coral colonies. ....	32
<b>Figure 19.</b> Coral health issues: A. <i>Drupella</i> snails grazing on an encrusting <i>Montipora</i> coral at the Holbourne deep location. B. Rubble and broken coral fragments caused by wave action in	

the Camp Island east 2 site. C. The sponge *Haliclona* growing amongst an *Acropora* colony in the Camp Island location. D. A small number of *Acanthaster* sea stars were still damaging corals in the Holbourne deep location in May 2020..... 33

**Figure 20.** Changes in density of hard coral recruits over the ambient surveys. .... 35

**Figure 21.** Composition of the hard coral recruit population in the three locations over the last three ambient surveys. Graphs show mean percentage composition of the major groups of coral recruits from the three locations. Composition is averaged across the three surveys ..... 35

**Figure 22.** Clumping *Acropora* coral with dense growth of *Padina* macroalgae in the deep Holbourne Island location during the October 2019 ambient survey. .... 37

**Figure 23.** Macroalgae, mainly *Asparagopsis* (above) and *Padina*, covered 10% of the substratum in the shallow Holbourne Island sites and almost 15% of the deep sites in October 2019. .... 37

**Figure 24.** Bare substratum suitable for new coral recruitment in the shallow Holbourne location still has low numbers of new coral recruits more than 3 years after Cyclone Debbie. .... 38

**Figure 25.** Completely bleached *Porites* colony in the deep Holbourne location during the May 2020 survey. .... 38

**Figure 26.** Partly dead *Stylophora* colony at Holbourne Island in May 2020. This colony has been bleached and part is recovering but part has died. .... 39

**Figure 27.** During the early 2020 bleaching event both *Millepora* (left) and the soft coral *Briareum* (right) were badly bleached as well as many hard corals. Holbourne deep location. .... 39

**Figure 28.** A few large *Acanthaster* sea stars were present at the deep Holbourne west location during both of the latest ambient surveys..... 40

**Figure 29.** Dense forest of *Sargassum* macroalgae at the East 1 Camp Island site in October 2019. Macroalgae cover was lower and less lush during the May 2020 survey..... 40

**Figure 30.** Rich cover of healthy *Acropora* staghorn corals at the West 1 Camp Island site during the October 2019 survey. Hard coral cover was almost 50% at this site..... 41

**Figure 31.** A mixture of healthy *Montipora* and *Acropora* corals at the Camp Island location in October 2019. .... 41

**Figure 32.** Badly bleached staghorn *Acropora* at the West 1 Camp Island site during the May 2020 survey. Parts of the colony in the foreground and right have died from bleaching stress. .... 42

**Figure 33.** Freshly dead and bleached *Acropora* staghorn at the East 1 Camp Island site. The orange-brown patch of *Acropora* (lower right) is still healthy. .... 42

**Figure 34.** Bleaching at Camp Island: recovering *Acropora* colony (centre) with a largely dead *Acropora* colony (lower right). Healthy *Montipora* colony (lower right), bleached *Montipora* (upper right) and fresh dead *Montipora* (lower left)..... 43

**Figure 35.** Healthy colony of *Pavona decussata* at the West 1 Camp Island site (left) alongside a bleached massive *Porites* colony. .... 43

**Figure 36.** Completely bleached *Montipora* colony at the West 1 Camp Island site during the May 2020 survey. .... 44

**Figure 37.** *Lobophyllia* colony at the West 1 Camp Island site. Individual polyps are either bleached, recovered or dead..... 44

**Figure 38.** Some patches of reef in the Camp West 1 site still had reasonable coral cover with low levels of bleaching mortality in May 2020. .... 45

**Figure 39.** Low level vertical view of the East 2 Camp Island site showing the large number of bleached *Montipora* colonies in the benthic community in May 2020. .... 45

## TABLES

**Table 1.** GPS coordinates of each monitoring site. .... 9

**Table 2.** Summary of all coral surveys made at the two Abbot Point Point survey locations. .... 9

**Table 3.** Repeated measures benthic cover analysis of variance design for determining significance of differences between the last three ambient surveys at three locations (df = degrees of freedom) ..... 13

**Table 4.** Abbot Point fringing reefs benthic organism abundance during the last three ambient surveys (mean percentage cover with standard deviations)..... 19

**Table 5.** Benthic changes between the three most recent surveys of the Abbot Point ambient monitoring project: Anova Results ..... 20

**Table 6.** Coral colony health status during the last three ambient surveys..... 26

**Table 7.** Abbot Point fringing reefs: changes in the density of partially bleached, diseased, sediment damaged and COT damaged corals between the last three ambient surveys: ANOVA Results..... 27

**Table 8.** Changes in frequency and depth of sediment load on corals over the three most recent ambient survey events..... 28

**Table 9.** Abbot Point Fringing Reefs: Changes in sediment depth on corals between the last three ambient surveys: Anova Results ..... 29

**Table 10.** Abbot Point Fringing Reefs: Patterns in the Density of Hard Coral Recruits Between the Last Three Ambient Surveys: ANOVA Results ..... 34

**Table 11.** Reef condition and indicator values during the last two ambient surveys. .... 36

## ACRONYMS AND ABBREVIATIONS

TropWATER	Centre for Tropical Water & Aquatic Ecosystem Research
NQBP	North Queensland Bulk Ports Corporation
GIS	Geographic Information System
dbMSL	Depth below Mean Sea Level
MSQ	Maritime Safety Queensland

# 1 INTRODUCTION

## 1.1 Project Background

The Port of Abbot Point is located 25 km north of Bowen and is an offshore coal loading terminal with a current export capacity of 50 million tonnes per annum and a 2018/19 throughput of 29 million tonnes. North Queensland Bulk Ports Corporation Limited (NQBP) is the port authority and port manager for this port under the *Transport Infrastructure Act 1994* (TI Act). The functions of NQBP as a port authority include establishing effective and efficient port facilities and services in its ports and making land available for the establishment, management and operation of port facilities in its ports by other persons.

NQBP began development of ambient coral monitoring programs for two other ports that they manage, the Ports of Mackay and Hay Point, during 2015. These programs were designed to gain a greater understanding of ambient reef conditions and the drivers of these conditions which would also allow for a greater capacity to manage potential influences during periods of Port related activities. Beginning in 2016 NQBP initiated ambient monitoring at key reef locations surrounding the Port of Abbot Point (**Error! Reference source not found.**): Holbourne Island (**Error! Reference source not found.**) and Camp Island (**Error! Reference source not found.**). The Australian Institute of Marine Science (AIMS) carried out the first survey event at these locations late in 2016 and made two more surveys during 2017: a post wet survey in mid-year and a pre-wet survey late in the year. TropWATER and Sea Research have continued the Abbot Point surveys since mid-2018. The last three surveys of these locations were: May 2019, October 2019 and May 2020.

## 1.2 Objectives of Survey

NQBP proposed relating surveys to the seasons, with the first survey being in the Spring, pre-wet season period and the second in the late Autumn post-wet season period. This ensured that surveys were made before and immediately after the period of maximum likely natural impacts, whether floods, cyclones or bleaching, enabling the causes of any benthic changes to be established reliably. The exact timing of these surveys is not critical; surveys just need to be regular enough to enable the causes of any changes to be established reliably.

AIMS established eight sites on Holbourne Island and four sites on Camp Island for the Abbot Point ambient monitoring program. In keeping with their fringing reef survey protocols they set up sites in two depth strata: 2m and 5m below LAT on Holbourne Island. Coral reefs on Camp Island do not extend below 2m depth and only a single stratum was surveyed there. Sea Research and TropWATER continued the Abbot Point surveys using the same 12 sites established by AIMS.

Surveys considered:

- Diversity and abundance of benthic communities;
- Percentage coral bleaching;
- Percentage coral mortality;
- Rates of sediment deposition on corals; and,
- Rates of coral recruitment.

This report documents the findings of the latest surveys from the two Abbot Point locations made between October 2019 and May 2020. As of October 2020, sites within each location will be adjusted to reflect a review

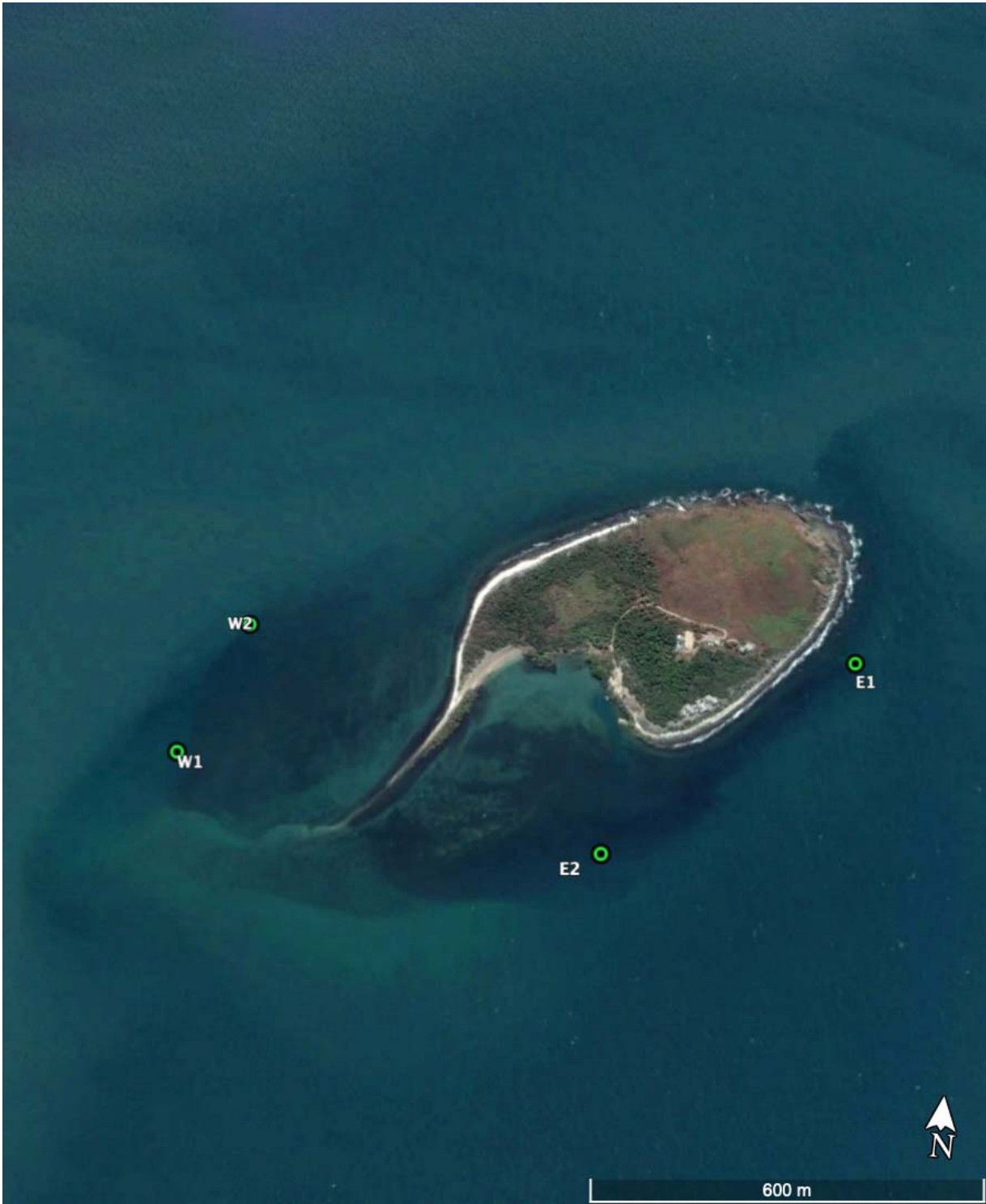
of the monitoring program to better represent coral and the benthic habitat communities. A modification of methods from line-intercept to photoquadrat analysis of benthic cover will also proceed from October 2020 in order to align with broader inshore coral monitoring programs through AIMS.



**Figure 1.** Location of the Port of Abbot Point showing the position of the Port and the Holbourne Island and Camp Island ambient coral monitoring sites.



**Figure 2.** Holbourne Island showing the position of the shallow strata coral monitoring sites. The equivalent deep sites are all about 50 m down slope from the shallow sites.



**Figure 3.** Camp Island showing the position of the four coral monitoring sites.

## 2 METHODS

### 2.1 Abbot Point Locations

Fringing reefs were surveyed around two island locations in the Abbot Point region (Figure 1, Table 1). Holbourne Island is a small mid shelf island surrounded by a fringing reef that is 32 km NNE of the Port of Abbot Point (Figure 2). Camp Island is a small near-shore island 19 km west of the port and only 2.5 km off the Elliot River mouth near the eastern side of Cape Upstart (Figure 3). Four monitoring sites of five 20 m long permanently marked transects were established in two depth strata on Holbourne Island and a single depth stratum on Camp Island in 2016 by AIMS (Table 2). These sites were established based on the importance of aspect and depth on key coral community health indicators; noting though that Camp did not have 2 depth strata given the reef slope transitioned to sand beyond 2m depth (and supported seagrass).

**Table 1.** GPS coordinates of each monitoring site.

Location	Ambient monitoring site ID	Latitude	Longitude
Holbourne Island	East S1 Shallow*	-19.7332	148.3644
Holbourne Island	East S2 Shallow*	-19.7336	148.3618
Holbourne Island	West S1 Shallow*	-19.7252	148.3547
Holbourne Island	West S2 Shallow*	-19.7233	148.3556
Holbourne Island	East S1 Deep*	-19.7338	148.3647
Holbourne Island	East S2 Deep	-19.7340	148.3618
Holbourne Island	West S1 Deep	-19.7249	148.3545
Holbourne Island	West S2 Deep*	-19.7232	148.3553
Camp Island	East S1	-19.8508	147.9052
Camp Island	East S2	-19.8541	147.9012
Camp Island	West S1	-19.8533	147.8942
Camp Island	West S2	-19.8512	147.8950

\* Shallow sites will be dropped from the program in October 2020 and two new sites will replace the deep sites at the same depth contour but in reef areas not currently represented in the program on the north and east side of the island.

**Table 2.** Summary of all coral surveys made at the two Abbot Point survey locations.

Survey date:	Camp Island	Holbourne Island
May 2016 <sup>†</sup>	X	X
Oct 2016 <sup>†</sup>	X	X
May 2017	X	X
Oct 2017	X	X
Jul 2018	X	X
Nov 2018	X	X
May 2019	X	X
Oct 2019*	X	X
May 2020*	X	X

X indicates locations that were included during each survey. \* Surveys covered by this report, <sup>†</sup> Surveyed by AIMS



## **2.2 Survey Period**

This report provides a summary of coral conditions observed during two different surveys undertaken at all Abbot Point reef locations over the period October 2019 to May 2020. The two survey periods were pre-wet 2019: 12-14 October and post-wet 2020: 10 and 25-26 May. Two surveys are included each year to ensure that the reasons for any observed impact are clear; with more than about eight months between surveys it may be difficult to determine the cause of any change in benthic cover.

Holbourne Island is a mid-shelf location and underwater visibility is usually between 5 and 15 m making the surveys consistently reliable. Although Camp Island is close to the coast and only a few kilometres off the Elliot River mouth underwater visibility there has been good during all surveys to date, ranging from 5-12 m, and surveys have not been compromised by poor water conditions.

### 2.3 Benthic Line Intercept Surveys

Abundance surveys of the marine communities surrounding these two islands were made at four sites around each island. On Holbourne Island where the reef extends down to over 20 m depth two depth strata were surveyed at each site (2m and 5m below Lowest Astronomical Tide (LAT)) but at Camp Island the reefs were very shallow and only a single depth stratum was surveyed (~2m below LAT). At each site and depth stratum, cover of major benthic reef organisms was assessed by five 20 m line intercept transects run along the required depth contour with a 5m gap between each transect. The transects were permanently marked with a star picket at the start and 12 mm reinforcing rod stakes driven into the seabed at 10 m intervals.

These sites were set up by the AIMS after the wet season in mid-2016 and re-surveyed in October/November 2016. All transects were re-located and repaired by AIMS following Cyclone Debbie in mid-2017. The marker stakes are remarkably resistant to cyclone waves and the majority of markers survived the cyclone although many of them were bent over or broken off near the base. TropWATER and Sea Research took over the survey of these transects in mid-2018 using the same markers and methods.

For each transect a survey tape was stretched tightly between the stakes close to the substratum and the length of intercept with the tape of all benthic organisms directly beneath it was measured. Intercept lengths for all colonies of a species or benthic group along each transect were totalled and converted to a percentage cover measurement. The following organisms or groups of organisms were recorded:

- Sand and mobile rubble;
- Macroalgae;
- Algal turf and crustose coralline algae;
- Sponges, fire corals and zoanthids;
- All hard corals identified to genus level (or to growth form if more appropriate); and
- All soft corals.

Digital photographs were taken in a strip along each transect on the shoreward side of the tape with a photograph taken every 0.5m. Note that during the AIMS surveys line intercepts were not recorded but percentage cover measurements were assessed using this transect photographic record.

These techniques have been used in many other surveys of fringing and offshore reefs in the Great Barrier Reef (GBR) region (Ayling and Ayling 2005; 2002; 1995; Mapstone et al. 1989). These methods align with the MMP methodologies thereby ensuring data collected under this ambient program is able to be compared to, and incorporated in, the broader State-wide mapping and reporting programs.

### 2.4 Sediment Deposition on Corals

Depth of sediment deposition (whether natural or dredge derived) was measured on 20 hard coral colonies haphazardly selected within a metre of each transect. If sediment was present on living parts of the colony surface the point of maximum sediment depth was measured in mm using a plastic ruler. Sediment usually only covered a portion of the colony surface and a single measurement of sediment depth was recorded where it was deepest. Sediment depths were not measured during the AIMS surveys of these locations.

## 2.5 Damaged, Diseased, or Bleached Coral Colonies

Although line intercept transects give a good estimate of coral cover, the sample size of coral colonies immediately beneath the transect lines is not sufficient to encounter relatively rare events such as coral disease or sediment damage. To sample a wider area the following parameters were also measured along each transect line:

- Counts of bleached or partially bleached colonies along a 20 x 2 metre transect centred on each transect line were recorded for each of the major coral groups.
- Counts of all sediment damaged colonies along a 20 x 2 m transect centred on each transect line were recorded for each of the major hard coral groups. Colonies were not recorded as sediment damaged if there was an actively growing edge encroaching into an old sediment-smothered dead patch.
- Counts of all diseased coral colonies along a 20 x 2 m transect centred on each transect line were recorded for each of the major hard coral groups. As for sediment damage, if there was an actively growing edge reclaiming a disease-caused dead patch that colony was not recorded as diseased.
- Counts of all colonies damaged by sponge overgrowth or *Drupella* or crown-of-thorns (COTs) grazing along the same 20 x 2 m transects.

## 2.6 Coral Recruitment

To get an indication of levels of coral recruitment in the study locations measures of coral demography were made during each of these surveys. The technique employed by the AIMS for their inshore reef surveys was used (Jonker et al. 2008). Using this technique small corals within 30 cm of the shoreward side of each transect were recorded in three size categories: 0-2 cm diameter; 2-5 cm diameter; 5-10 cm diameter. The genus of each young coral was recorded and numbers were summed from all five transects at each site.

## 2.7 Analysis

Given the large amount of natural patchiness in the abundance of all marine organisms, and the variation in abundance changes through time within each patch, it is necessary to use statistical analysis to determine if any change is significant. The variation may be so high that what appears to be quite a large nominal change may not be a real change but just due to sampling the natural variation within the community differently. Analysis of variance techniques are usually used to determine the significance of any apparent changes in abundance between successive benthic surveys. The design of the benthic abundance surveys was established to enable a repeated measures analysis of variance after subsequent surveys (Table 3). Because the transects were fixed and the same bits of the benthic community were assessed during each survey a more powerful repeated measures analysis is appropriate in this case. This analysis tested the significance of changes in a number of factors that may have influenced benthic abundance.

1. The first factor was the three locations (the two depth strata at Holbourne were treated as separate locations) i.e. to determine whether there were significant differences in benthic abundance among these locations.
2. The second factor was the four different sites surveyed at each location i.e. to determine whether there were significant differences in benthic abundance among the four sites within each location. Site is said to be nested within the location factor because site 1 at one location is not necessarily subject to the same influences as site 1 at the other locations e.g. what affects each site is unique to that site. Nested factors are indicated with brackets e.g. Site (Location) indicates that the site factor is nested within the location factor.

3. The third factor in the analysis design was time i.e. to determine whether there were any significant changes in benthic abundance between successive surveys at the same sites.

Interactions between the three factors were also determined in the analysis. The most important test in the design was the interaction between Location and Time (indicated as Location x Time). If benthic abundance changes caused by ambient conditions are the same in each location then this interaction will not be significant but if benthic abundance decreases at one location and either does not change or increases at another location then the interaction may be significant, even though the mean coral cover may not have changed between the two surveys (the increase at one location could cancel out the decrease at another location and mean coral cover would stay the same).

Changes in sediment depth on coral colonies were tested for each location using a two-factor analysis of variance. As sediment depth is measured on a different random selection of corals during each survey then repeated measures analysis is not appropriate. Two factor repeated measures analyses of variance were used to check the significance of changes in the density of damaged and diseased coral colonies in each location. In this case damaged and diseased colonies were assessed within the same transect area during each survey enabling the use of repeated measures analysis.

The significance of changes over the 11 months covered by the three most recent surveys of all locations (June 2018, Nov 2018, May 2019) was tested with one series of anovas (Table 3) but another series of analyses were used to establish the significance of any benthic or coral damage changes over all the surveys that have been carried out since 2016.

**Table 3.** Repeated measures benthic cover analysis of variance design for determining significance of differences between the last three ambient surveys at three locations (df = degrees of freedom)

Source of variation	df	Denominator
Between Transects:		
Location	2	Error (transects)
Site (location)	9	Error (transects)
Error (transects)	48	
Within Transects:		
Time	2	Error (transects x Time)
Location x Time	4	Error (transects x Time)
Site (location) x Time	18	Error (transects x Time)
Error (transects x Time)	96	

## **3 RESULTS**

### **3.1 Climatic Conditions**

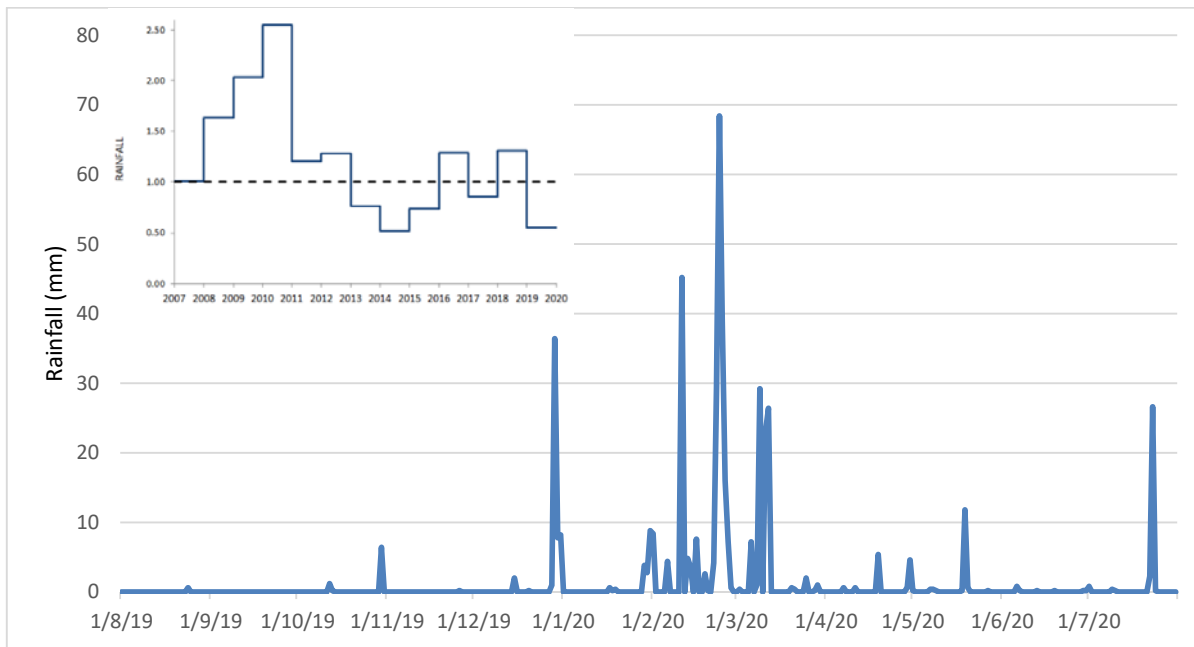
One of the key drivers of coral community health is the climatic conditions experienced by that community over time. Major climatic drivers of coral health include local and regional rainfall and river discharges into the nearshore environment, cyclonic conditions, other strong wind episodes and sea water temperatures. The following section deals with the climatic conditions during the present ambient monitoring period from June 2019 to July 2020 and compares these conditions to data collected since coral monitoring began around Abbot Point in 2016. The Don River which discharges into the nearshore environment just north of Bowen, 30 km from Holbourne Island, and the Elliot River which discharges only 2.5 km inshore from Camp Island are used here as indicators of local river inputs.

#### **3.1.1 Rainfall and River Flows**

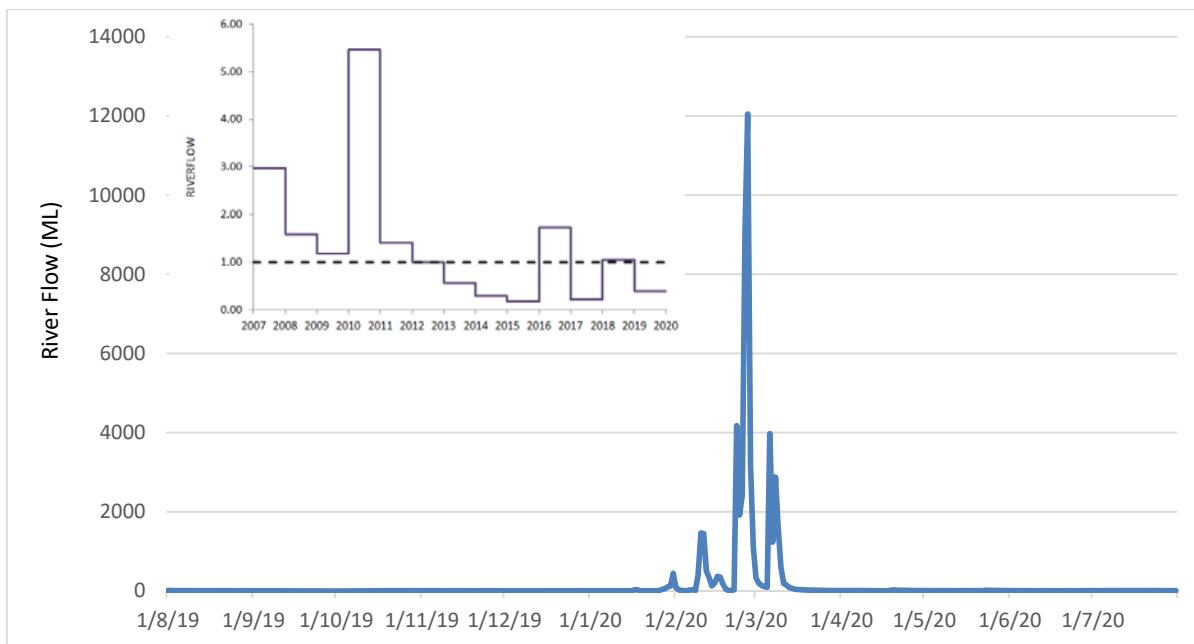
The rainfall measured by the Bureau of Meteorology (BOM) at the Bowen Airport (BOM 2020) is provided graphically in Figure 4. The Don River discharge rate at Reeves (23km from the mouth of the River) is presented using data provided by the Queensland Government Water Monitoring Information Portal (WIMP 2020) in millions of litres per day (ML/day) (Figure 5). Rainfall and Elliot River discharge rates are recorded at Guthalungra seven kilometres upstream from the river mouth and are shown from July 2016 to June 2020 (Figure 6).

The Bowen region is in the dry tropics and mean annual rainfall is only 893mm with 660mm of that falling in the four-month wet season (Dec-Mar). Rainfall for the 2019/2020 wet season was well below average for this region with only 406mm recorded for the December-March period compared to the 660mm average. Maximum daily rainfall during the 2019/2020 period was only 68.4mm and more than 50mm of rain was recorded on only one day. For comparison, rainfall in the 2018/19 monsoonal months of December to March was well above 1,000mm. Rainfall this low have not been observed in the Abbot Point/ Bowen region since 2014.

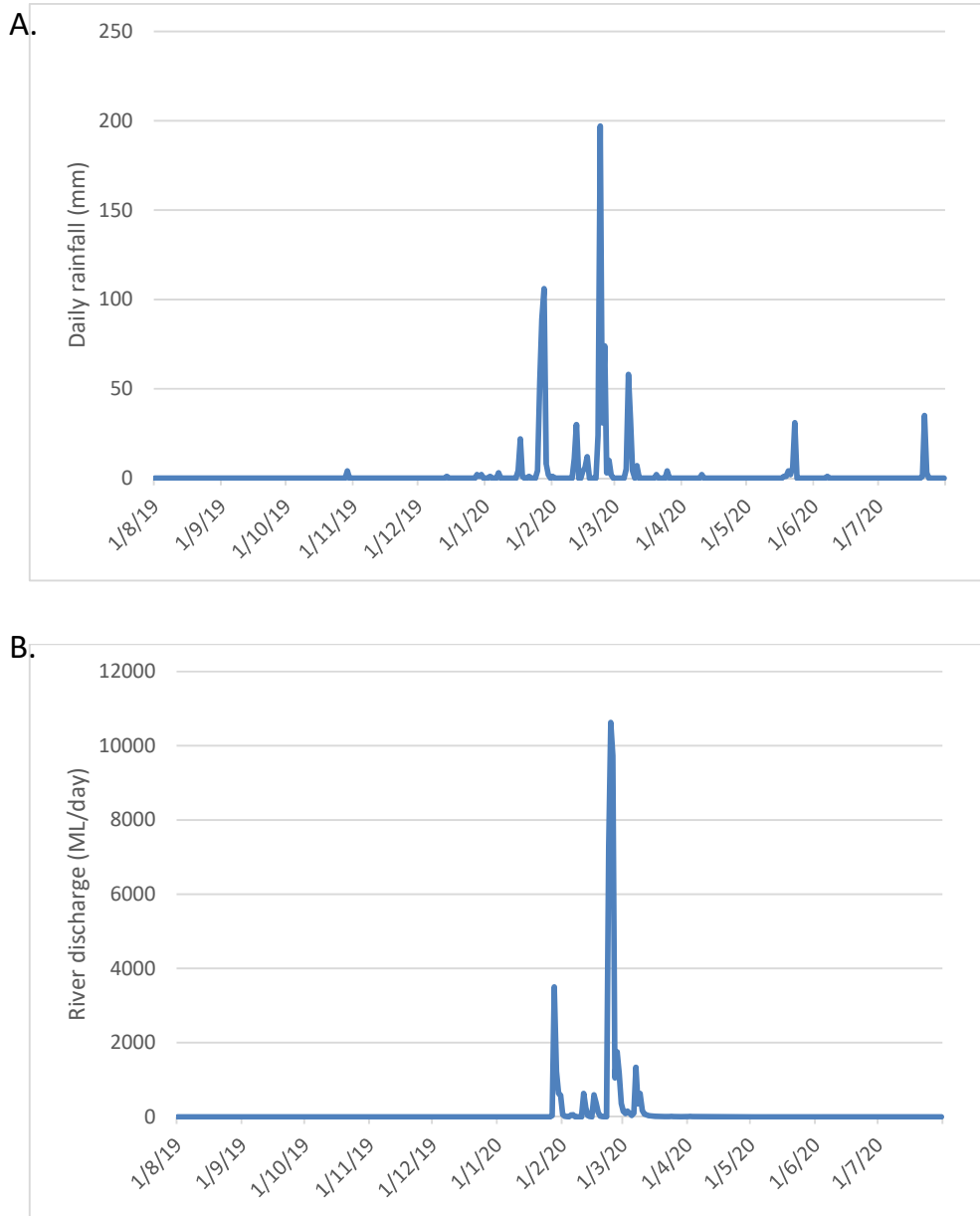
Large sustained rainfall events typically cause large river discharges. Water discharges from the Don River were very low during 2019/2020, peaking at only 12,000 ML/day in late February 2020. There have been 13 events of 35,000 ML/day or greater flow since records began at this site in 1984. Flows of over 100,000 ML/day were recorded in 2008 and during the passage of Cyclone Debbie in March 2017. The Elliot River is a smaller system and flows are usually smaller, peaking at less than 11,000 ML/day during 2019/2020. Flows from this river system peaked at 32,000 ML/day during Cyclone Debbie and 25,000 ML/day during the 2019 monsoonal event. Elliot River flows equal to or greater than those recorded during Cyclone Debbie have occurred on only seven occasions since 1973 (TropWATER 2019).



**Figure 4.** Daily rainfall measured at the Bowen Airport with inset of change in rainfall as a proportion of the long-term average.



**Figure 5.** Don River daily discharge rates (mega litres) measured at Reeves, 23 km upstream from the river mouth with inset of change in river flow as a proportion of the long-term average.



**Figure 6.** A. Daily rainfall measured at Gathulunga, 7 km upstream from the Elliot River mouth, B. Elliot River discharge at Gathulunga.

### 3.1.2 Cyclones

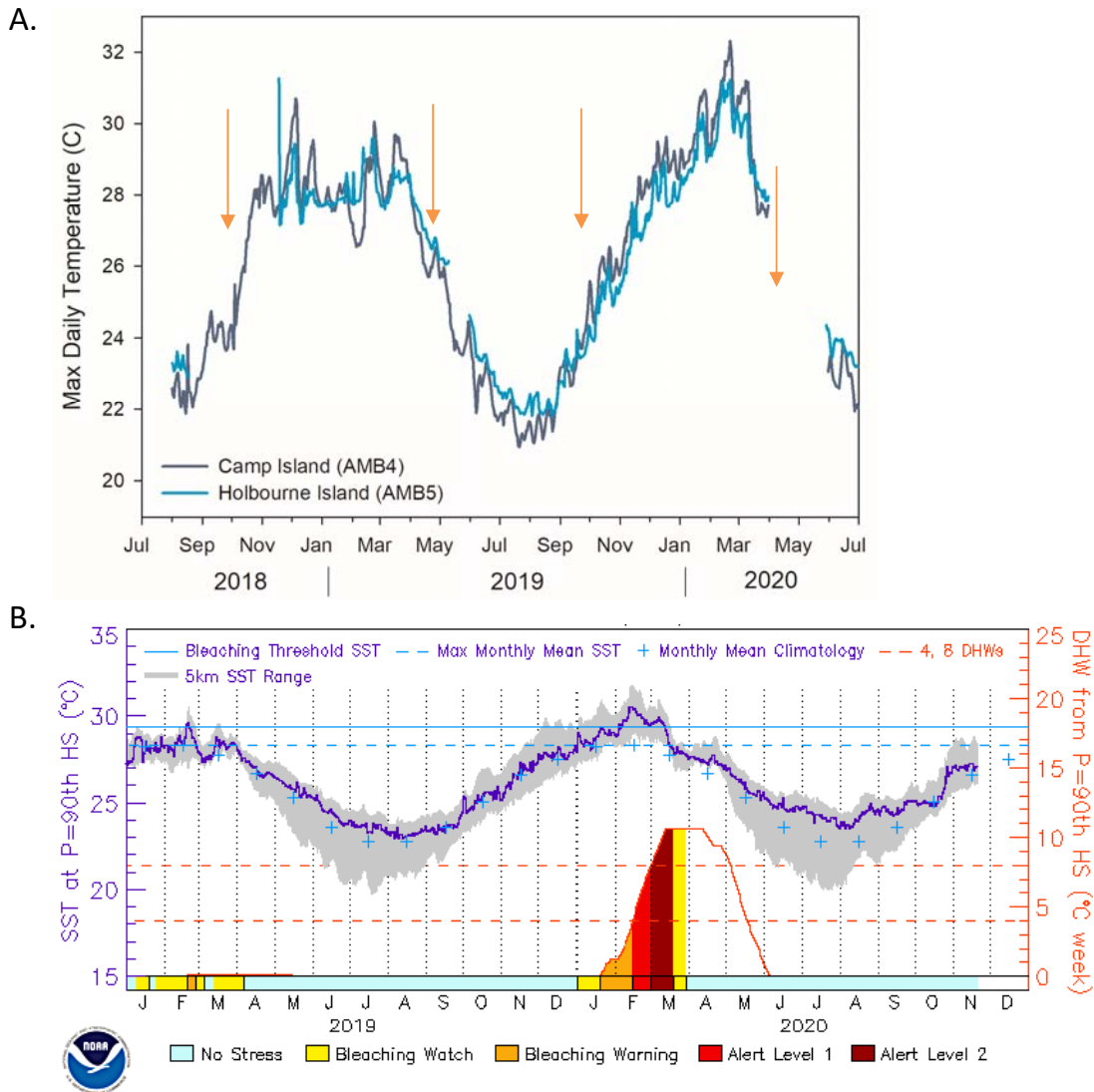
During the 2019/20 ambient monitoring period no cyclones passed near Abbot Point but a moderate monsoonal event in late February 2020 impacted the region. The Bowen region experienced moderate rainfall during this event with 165mm recorded in Bowen and 340mm at Guthalunga on the Elliot River. Peak river flows for 2019/20 were recorded for both the Don and Elliot Rivers during this event (Figure 6B). This was the major weather event of the past 12 months for the Abbot Point region.

Prior to 2018 only one cyclone passed close to Abbot Point leading to strong or damaging winds and high rainfall that may have impacted the benthic communities in the coral monitoring locations since they were established. Severe Tropical Cyclone Debbie in late March 2017 generated gale force winds in the Bowen to Mackay region for more than 50 hours. Wave heights recorded near Holbourne Island during this event were

over 8 m for many hours and peaked at 11.5 m. This system caused severe physical damage to the Holbourne Island benthic communities but minimal damage at the Camp Island location (AIMS 2018).

### 3.1.3 Sea Water Temperatures

Sustained elevated water temperatures that caused coral bleaching were recorded during the 2019/2020 summer period in the Abbot Point region as well as in many other parts of the GBR. Sea temperature measurements are collected by TropWATER at a number of sites in the nearshore environment offshore from Bowen. Overall, temperatures were significantly higher in the Central Region of the GBR and reached Alert Level 1 by mid-February and Alert Level 2 for the majority of March (Figure 7B). At the inshore Camp Island site compared to the more offshore Holbourne Island (Figure 7A). The highest temperature was recorded in late February 2020 at Camp Island which reached 32.3°C. The coolest temperature occurred in July 2019 when temperatures dropped to a low of 20.4°C (Figure 7).

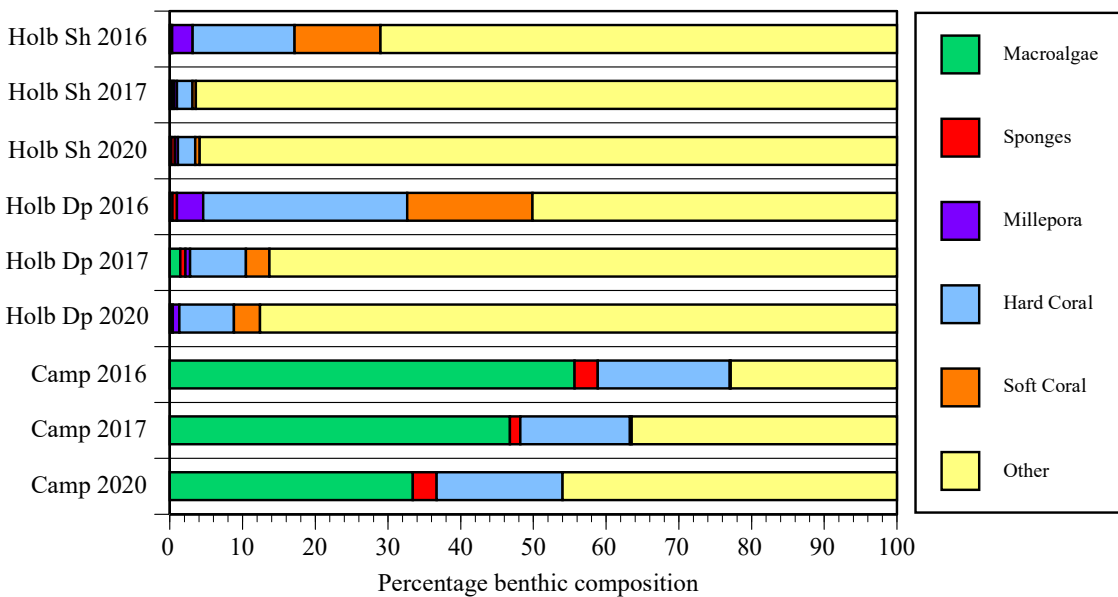


**Figure 7.** A) Maximum daily temperature at Holbourne Island and Camp Island water quality monitoring sites. Arrows indicate approximate survey dates. B) Central GBR 5 km regional virtual station time series graphs showing the significant Feb/March heating event in the region.



### 3.2 Benthic cover during the last three ambient surveys

Benthic communities on the Holbourne Island sites were severely affected by Cyclone Debbie with 78% of coral cover lost on Holbourne East and 86% on Holbourne West between 2016 and 2017 (Figure 8; AIMS 2018). Recovery has been very slow and the majority of the reef surface is still occupied by sand/rubble, crustose coralline algae and turfing algae. These three categories accounted for about 95% of the substratum in the shallow sites and 85% in the deep sites during the latest survey, consistent with the last two years of surveys (Figure 8). Macroalgae were usually uncommon on the Holbourne Island reefs with less than 2% cover but during the October 2019 survey there had been a strong bloom of *Padina* macroalgae that covered 15% of the shallow substratum and 10% of the deep substratum (Figure 9). Macroalgae had completely disappeared from the Holbourne sites by the time of the May 2020 survey. *Millepora* fire corals covered about 1% of the shallow sites and 1.5% of the deep sites. Hard coral cover was about 2% in the shallow sites and 8% in the deep sites, while soft coral covered less than 1% of the shallow sites and around 4% in the deep sites. Benthic communities on Camp Island had not been devastated by Cyclone Debbie. This location is an inshore site and macroalgal cover varied between 33-40%. Sand/rubble, crustose corallines and turfing algae only accounted for 35-45% of the substratum in this location during the last two ambient surveys (Figure 8). Sponges covered 2-3% of the substratum at Camp Island. Hard coral cover decreased from 26% down to 17% cover between the last three ambient surveys. Soft corals were rare at this location covering less than 0.1% of the substratum.

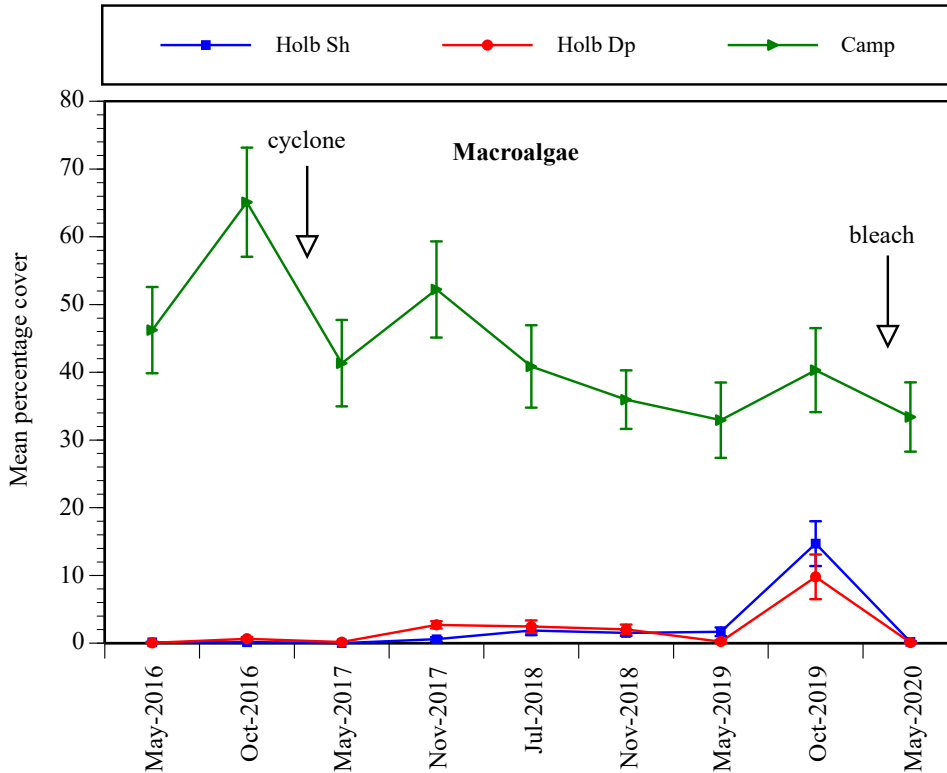


**Figure 8.** Changes in benthic composition in the three locations between May 2016 and May 2020. Plot shows mean percentage benthic composition from the ambient survey at each location before Cyclone Debbie in 2016, the survey following the cyclone in 2017 and the latest ambient survey (2020). Benthic category ‘Other’ = sand + bare reef + crustose corallines + algal turf. Holb Sh = Holbourne Island shallow stratum; Holb Dp = Holbourne Island deep stratum.

Holbourne Island is a mid-shelf location and macroalgae are not usually a feature of the benthic community. As mentioned above, Holbourne Island was experiencing a temporary bloom of *Padina* macroalgae in October 2019 (Figure 9, Figure 22). This algal species forms low clumps and does not usually smother or shade adjacent hard or soft corals. Camp Island is an inshore location and had moderate cover of *Sargassum* macroalgae (30-40%) and hence there were strongly significant differences in algal cover among the locations (Figure 9, Table 5). Algal cover fluctuated significantly over the past three ambient surveys, being higher during the pre-wet

October 2019 survey than during either post-wet survey (Figure 9). This pattern was similar in all three locations and hence the Location x Time interaction was not significant (Table 5).

Sponges were not common in any of these locations (Table 4, Figure 8) but were most abundant on Camp Island where the cover of this benthic group was 3.3% during the May 2020 ambient survey. The most abundant sponge was the green *Haliclona cymaeformis* (formerly known as *Sigmadocia symbiotica*) that often grew amongst the branching corals at this location. Sponge cover was lower during the pre-wet survey than during either post-wet survey on Camp Island and both the Time and Location x Time factors were significant (Table 5).



**Figure 9.** Changes in percentage cover of macroalgae. Graphs show grand mean percentage algal cover from all ambient surveys at each location (five 20m line intersect transects surveyed at four sites for each location). Error bars are standard errors. Holb Sh = Holbourne Island shallow stratum; Holb Dp = Holbourne Island deep stratum.

**Table 4.** Abbot Point fringing reefs benthic organism abundance during the last three ambient surveys (mean percentage cover with standard deviations)

Family/Group	May 2019		October 2019		May 2020	
	mean	sd	mean	sd	mean	sd
HOLBOURNE SHALLOW						
Total macroalgae	1.7	2.8	14.7	14.7	0.2	0.6
Total sponges	0.3	0.8	0.3	1.0	0.5	1.2
Total hard corals	2.5	2.9	2.6	2.6	2.4	2.8
<i>Acropora</i> spp.	0.1	0.1	0.1	0.2	0.2	0.3

<i>Montipora</i> spp.	0.9	1.5	1.2	1.7	1.3	1.8
Agariciidae	0.1	0.1	0.1	0.1	-	-
Siderasteridae	0.3	0.9	0.3	1.1	0.3	1.1
Mussidae	0.3	0.8	0.3	0.7	0.2	0.4
Faviidae	0.6	1.2	0.5	0.8	0.3	0.5
Poritidae	0.2	0.3	0.2	0.3	0.1	0.3
Total soft corals	0.8	1.4	0.5	0.9	0.6	1.2
HOLBOURNE DEEP						
Total algae	0.2	1.1	9.8	14.7	0.1	0.3
Total sponges	0.2	0.5	0.2	0.5	0.3	0.5
Total hard corals	8.7	5.0	7.6	4.7	7.5	5.4
<i>Acropora</i> spp.	1.9	3.3	2.0	3.3	2.5	4.0
<i>Montipora</i> spp.	2.6	2.7	1.5	1.9	1.7	2.2
Agariciidae	0.1	0.3	0.1	0.3	0.1	0.2
Siderasteridae	-	-	0.1	0.3	-	-
Mussidae	0.3	0.5	0.2	0.2	0.3	0.5
Faviidae	1.3	1.4	1.4	1.5	1.1	1.2
Poritidae	1.6	1.7	1.4	1.2	1.3	1.5
Total soft corals	3.6	4.7	3.2	4.0	3.6	5.0
CAMP						
Total algae	32.9	24.8	40.3	27.8	33.4	22.7
Total sponges	2.7	2.9	1.8	2.5	3.3	4.1
Total hard corals	26.0	21.4	24.2	20.6	17.3	13.4
<i>Acropora</i> spp.	13.5	18.5	12.4	17.2	6.5	7.8
<i>Montipora</i> spp.	8.8	9.4	8.5	8.2	7.8	8.5
Agariciidae	1.7	5.0	1.6	4.8	1.3	3.7
Siderasteridae	0.1	0.1	0.1	0.1	0.2	0.7
Mussidae	0.1	0.1	0.1	0.5	-	-
Faviidae	0.4	0.7	0.3	0.7	0.3	0.7
Poritidae	0.8	1.4	0.8	1.6	0.7	1.7
Total soft corals	0.1	0.2	0.1	0.4	-	-

Figures are grand means from five 20 m transects at four sites in each location

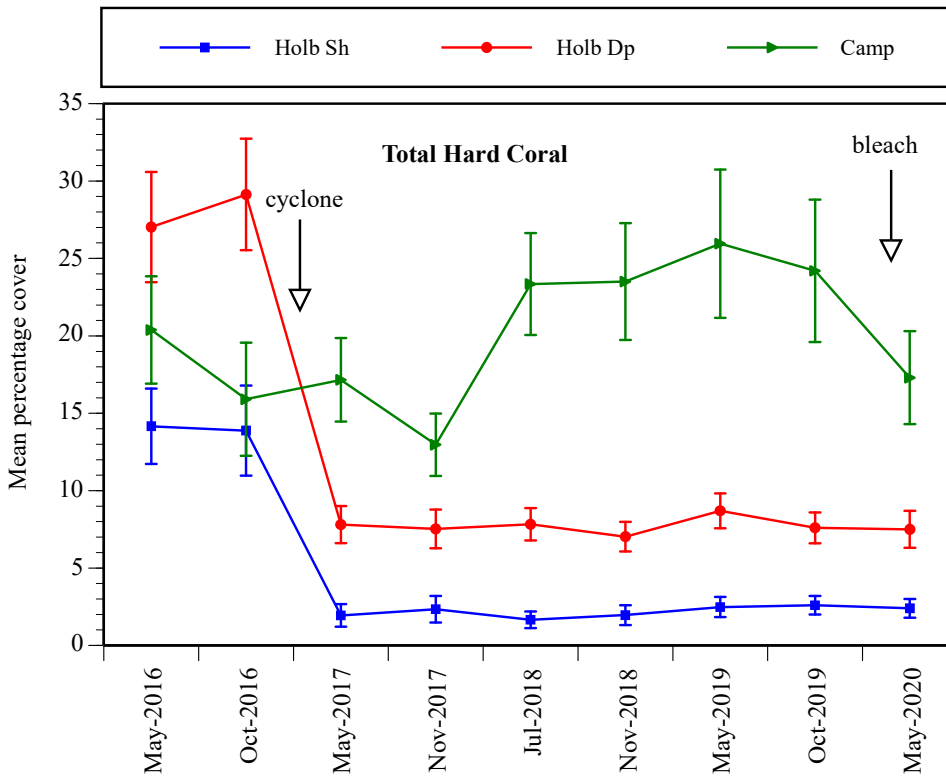
**Table 5.** Benthic changes between the three most recent surveys of the Abbot Point ambient monitoring project: Anova Results

Family/Group	Location	Site (L)	Time	L x T	S x T(L)
Total algae	***	***	***	NS	NS
Total sponges	***	***	***	***	***
Total hard corals	***	***	***	***	***
<i>Acropora</i> spp.	***	***	***	***	***
<i>Montipora</i> spp.	***	***	NS	NS	NS

Agariciidae	NS	**	NS	NS	NS
Faviidae	***	NS	NS	NS	NS
Poritidae	***	**	NS	NS	NS
Total soft coral	***	***	NS	NS	NS

NS = not significant; \* = 0.05>p>0.01, \*\* = 0.01>p>0.001, \*\*\* = p<0.001

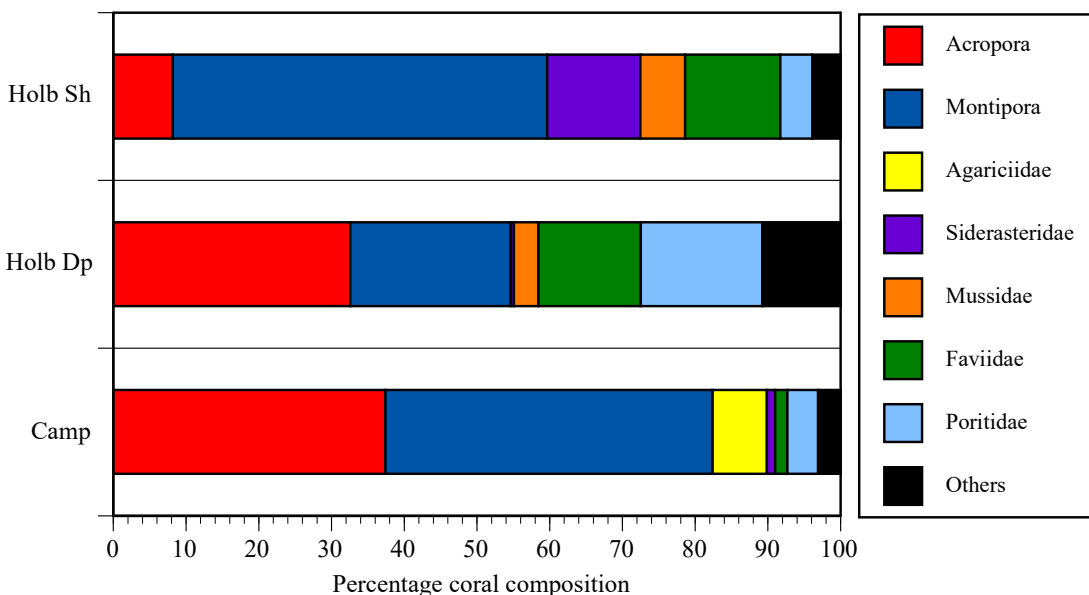
Total hard coral cover was significantly higher in the Camp Island location than in the two Holbourne Island locations during the last three ambient surveys and significantly higher in the deep stratum on Holbourne Island than in the shallow sites (Table 5, Figure 10). Mean coral cover during these surveys was between 17% and 26% on Camp Island, around 2.5% on shallow Holbourne reefs and 7.5-9% on deep Holbourne reefs. Coral cover decreased significantly over the twelve months covered by these three surveys. The decrease was much greater on Camp Island compared to the Holbourne locations and the Time x Location interaction was significant for total hard coral cover.



**Figure 10.** Changes in the cover of total hard coral. Graphs show grand mean percentage benthic cover from all ambient surveys at each location (five 20m line intersect transects surveyed at four sites for each location). Error bars are standard errors. Holb Sh = Holbourne Island shallow stratum; Holb Dp = Holbourne Island deep stratum.

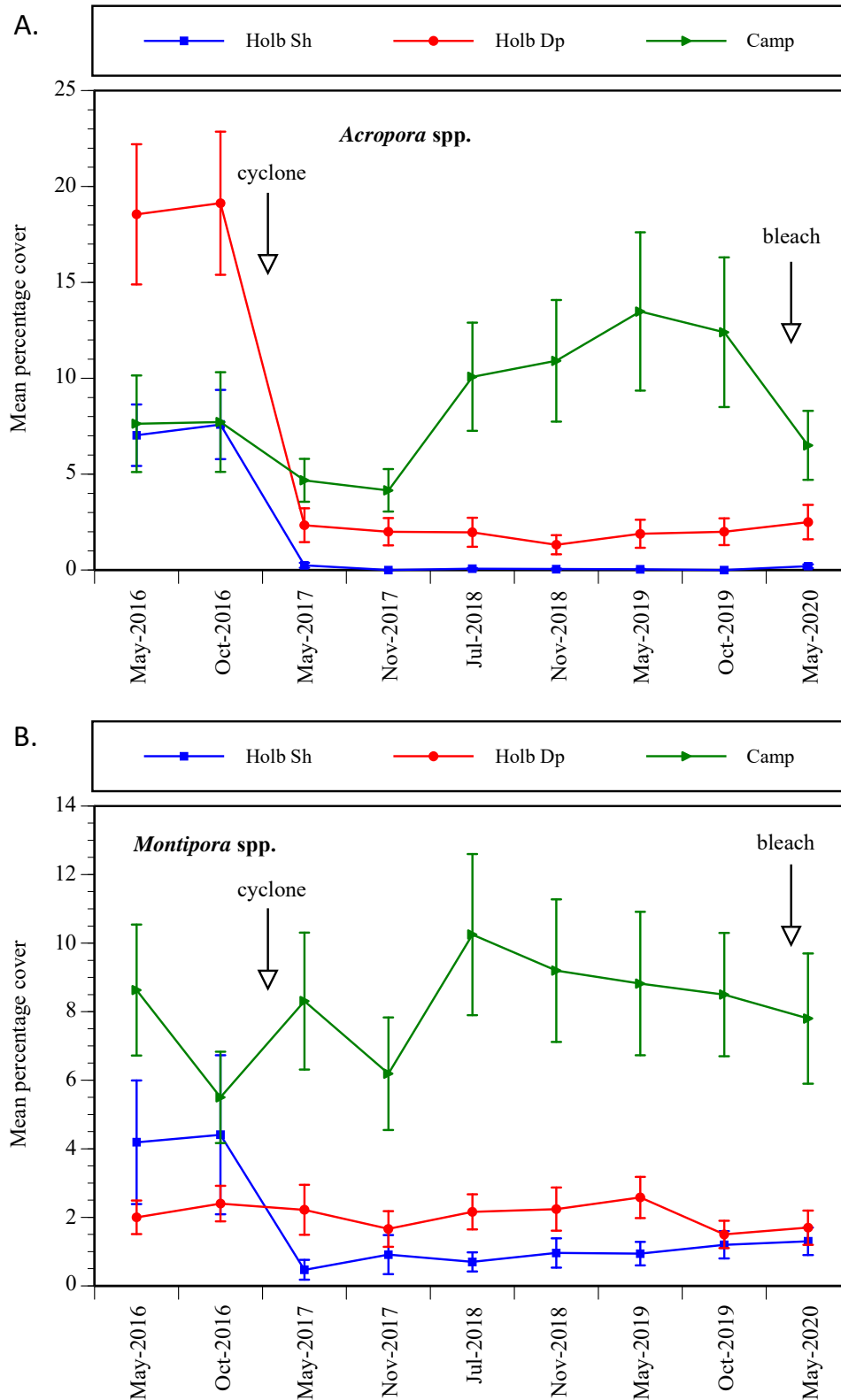
Hard coral community composition was different in each location (Figure 11). Coral communities in the shallow stratum at Holbourne Island were dominated by *Montipora* spp. (47% of total coral cover) and faviid corals (20% of total coral cover). In the deep Holbourne stratum *Montipora* spp. corals, *Acropora* spp. corals, faviids and poritids were all abundant (86% of coral cover between them). Camp Island coral communities were dominated by fast growing *Acropora* spp. corals (42% of coral cover) and *Montipora* spp. corals (43% of coral cover). Agariciid corals were also present on Camp Island, but only at one of the four sites, with large colonies of *Pavona decussata* accounting for almost 12% of coral cover at the West 1 site. Coral composition

was affected by Cyclone Debbie on Holbourne Island but has not changed over the past three surveys at any location.

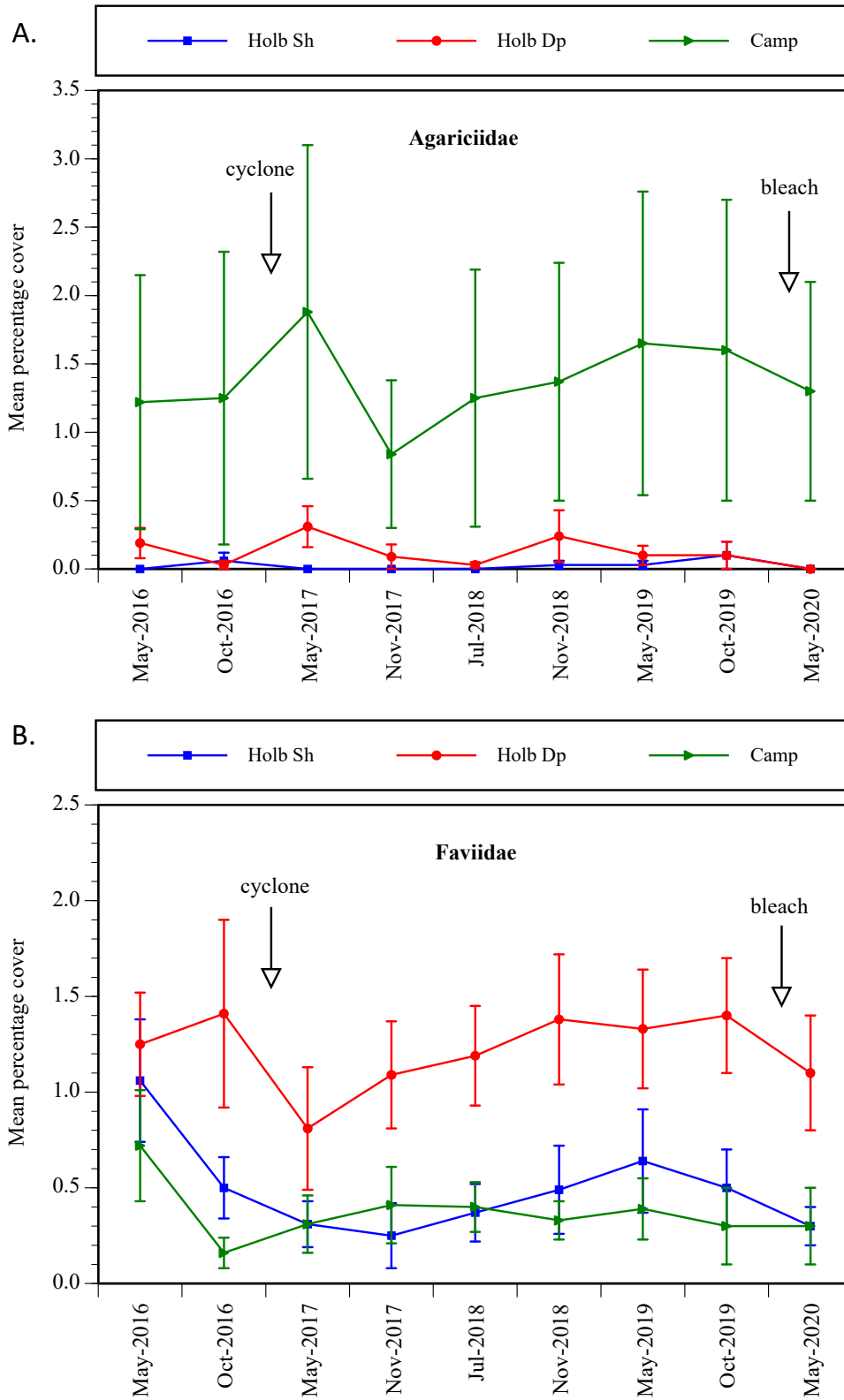


**Figure 11.** Coral community composition at the three locations for the last three ambient surveys. Graphs show mean percentage composition of the major coral groups from the three locations. Composition is averaged over the past three surveys. Holb Sh = Holbourne Island shallow stratum; Holb Dp = Holbourne Island deep stratum.

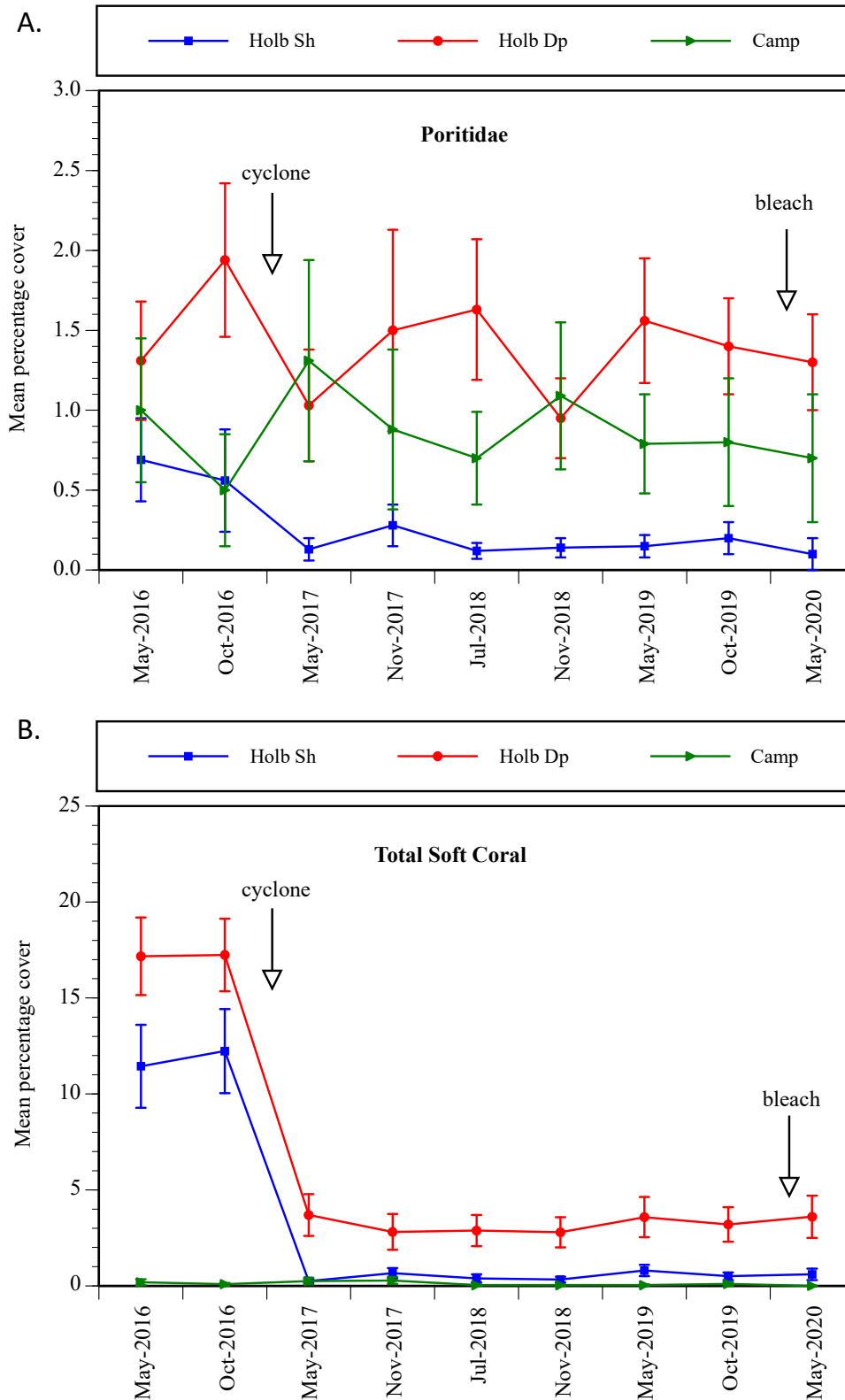
All but the agariciid coral group showed significant location differences during the last three ambient surveys (Table 5). *Acropora* and *Montipora* corals were significantly more abundant on Camp Island than in the two Holbourne locations (Figure 12). Although agariciid corals were nominally more abundant on Camp than in the Holbourne locations these differences were not significant because of the huge variability in abundance of this group at both the site and transect level. Faviid and poritid corals were significantly more abundant on the deep Holbourne Island location than the other two locations (Figure 13, Figure 14). Over the twelve months spanned by the last three ambient surveys significant changes in cover were recorded only for the *Acropora* coral group. This group decreased in abundance at Camp Island but did not change in the two Holbourne locations and hence the Location x Time interaction was also significant. Although *Montipora* corals decreased nominally in cover on the Camp Island and Holbourne deep locations over the past twelve months and did not change on the Holbourne shallow location the Location x Time interaction was not significant for this group (Table 5). Faviids, poritids and agariciids also decreased nominally over the past twelve months but these declines were not significant (Figure 13, Figure 14).



**Figure 12.** Changes in the cover of coral groups: *Acropora* corals and *Montipora* corals. Graphs show grand mean percentage benthic cover from all ambient surveys at each location (five 20m line intersect transects surveyed at four sites for each location). Error bars are standard errors. Holb Sh = Holbourne Island shallow stratum; Holb Dp = Holbourne Island deep stratum.



**Figure 13.** Changes in the cover of coral groups: Agariciid corals and Faviid corals. Graphs show grand mean percentage benthic cover from all ambient surveys at each location (five 20m line intersect transects surveyed at four sites for each location). Error bars are standard errors. Holb Sh = Holbourne Island shallow stratum; Holb Dp = Holbourne Island deep stratum.



**Figure 14.** Changes in the cover of benthic groups: Poritid corals and Total Soft corals. Graphs show grand mean percentage benthic cover from all ambient surveys at each location (five 20m line intersect transects surveyed at four sites for each location). Error bars are standard errors. Holb Sh = Holbourne Island shallow stratum; Holb Dp = Holbourne Island deep stratum.



Soft corals were significantly more abundant on the deep Holbourne location during the last three ambient surveys, where this group covered a mean of around 4% of the substratum, than in the other two locations (Table 4, Table 5, Figure 14). Soft coral cover did not change significantly during these last three surveys (Table 5).

### 3.4 Coral Bleaching

Mass coral bleaching is caused by high temperature stress and a severe temperature anomaly occurred during the early months of 2020 (Figure 7B). A large number of coral colonies from a range of families were either partially or totally bleached at the time of the May 2020 surveys. Some bleached colonies were dead or dying but others had started to recover at this time. Not all corals were bleached with some colonies either not bleached or completely recovered. Bleaching relative to coral cover was highest on Camp Island and in the Holbourne deep locations with about two bleached colonies per percent cover, compared to about one bleached colony per percent cover in the Holbourne shallow location (Figure 15, Table 6, Table 7). There was a strongly significant increase in the number of bleached coral colonies per transect from the previous two surveys to the May 2020 survey due to this bleaching event. The increase in bleached coral numbers was highest on Camp Island where coral cover was much higher than in the Holbourne locations and hence the Location x Time interaction was also significant (Table 7). Many of the *Acropora* corals on Camp Island were bleached and partially or completely dead and this had resulted in a decrease in *Acropora* cover from 12.4% to 6.5% between October 2019 to May 2020 (Figure 12, Figure 16). Many of the *Acropora* corals that were still alive on Camp Island remained totally bleached and may still die before this bleaching event is over leading to further reductions in coral cover. Some bleached *Montipora* corals had also died as had parts of some colonies from other coral groups such as pocilloporids, poritids and mussids (Figure 26, Figure 37).

**Table 6.** Coral colony health status during the last three ambient surveys

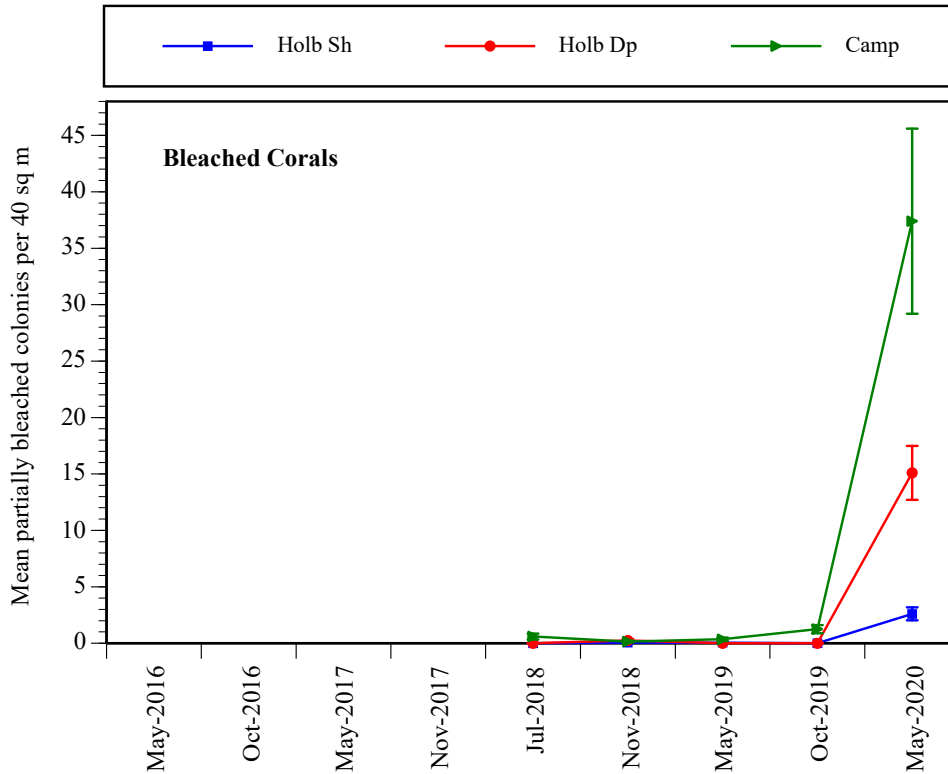
Location	May 2019		Oct 2019		May 2020	
	mean	se	mean	se	mean	se
HOLBOURNE SHALLOW						
Partially bleached colonies	0.1	0.1	0.0	0.0	2.6	0.6
Disease damaged colonies	0.1	0.1	0.0	0.0	nr	
Sediment damaged colonies	0.2	0.1	0.1	0.1	nr	
COT damaged colonies	0.0	0.0	0.0	0.0	0.0	0.0
HOLBOURNE DEEP						
Partially bleached colonies	0.0	0.0	0.0	0.0	15.1	2.4
Disease damaged colonies	0.4	0.2	0.1	0.1	nr	
Sediment damaged colonies	0.3	0.2	0.0	0.0	nr	
COT damaged colonies	1.6	0.9	1.8	0.8	0.3	0.3
CAMP						
Partially bleached colonies	0.4	0.2	1.3	0.4	37.4	8.2
Disease damaged colonies	0.5	0.2	0.7	0.3	nr	
Sediment damaged colonies	0.8	0.3	0.0	0.0	nr	
COT damaged colonies	0.0	0.0	0.0	0.0	0.0	0.0

Damaged corals are recorded as mean number per 40 sq m transect. COT=crown-of-thorns; nr=not recorded due to bleaching.

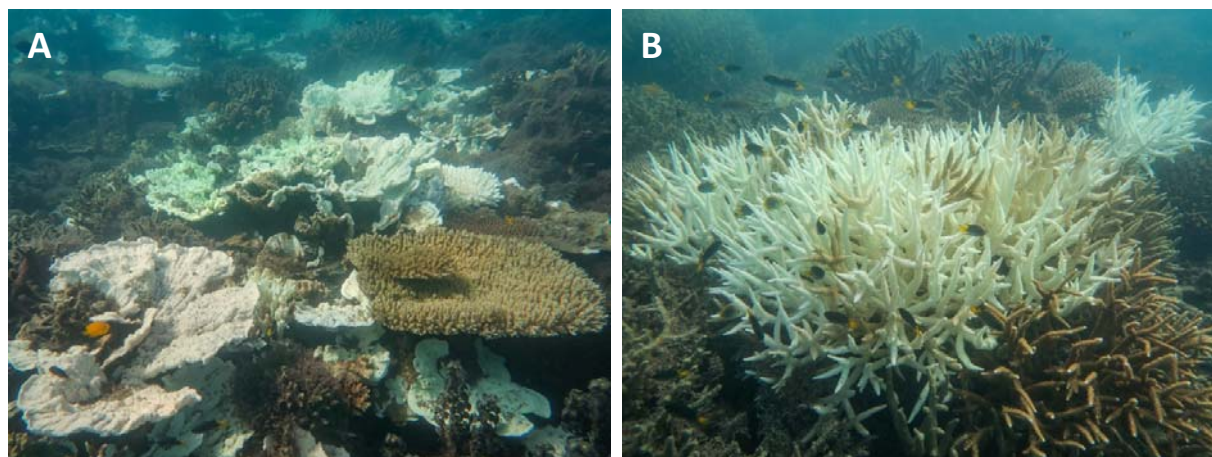
**Table 7.** Abbot Point fringing reefs: changes in the density of partially bleached, diseased, sediment damaged and COT damaged corals between the last three ambient surveys: ANOVA Results

Factor:	Location	Site (L)	Time	L x T	S x T(L)
Partial bleaching changes	***	***	***	***	***
Coral disease changes	***	***	NS	NS	NS
Sediment damage changes	*	***	***	*	***
COT damage changes	***	***	NS	*	***

NS = not significant; \* = 0.05 > p > 0.01, \*\* = 0.01 > p > 0.001; \*\*\* = p < 0.001



**Figure 15.** Changes in Density of Bleached and Partially Bleached Hard Coral Colonies. Graphs show grand mean density of bleached and partially bleached corals per 40sq m from four sites of five 20 x 2m transects in each location from the last five ambient. Error bars are standard errors. Holb Sh = Holbourne Island shallow stratum; Holb Dp = Holbourne Island deep stratum.



**Figure 16.** A. Bleached *Montipora* colonies on Camp Island along with some bleached *Acropora* colonies and a few corals that have died from bleaching. B. Bleached staghorn *Acropora* corals with a healthy colony (lower right) and dead colonies (background).

### 3.5 Sediment Deposition on Coral Colonies

Many corals on fringing reefs have some sediment on their surface as a result of natural sediment resuspension and movement during strong winds and/or spring tides. Port related activities such as dredging also have the potential to contribute to sediment in the water column but no port related activities of this sort occurred during the period covered by these ambient surveys. Both the percentage of corals with sediment load and the depth of that sediment increased significantly between the October 2019 and the May 2020 surveys at all locations (Figure 17, Table 8, Table 9). As would be expected sediment levels were much lower on the more offshore Holbourne Island locations than in the more coastal Camp Island location (Table 8). Changes in both the number of corals with surface sediment and the sediment depth were highest on Camp Island giving a significant Time x Location interaction for sediment depth (Table 9, Figure 17). Both the number of corals with surface sediment and the sediment depth have increased at all three locations over the past two years. The very high levels recorded during the latest May 2020 survey are probably due to bleaching stress of the corals reducing the ability of the polyps to shed sediment from their surface.

**Table 8.** Changes in frequency and depth of sediment load on corals over the three most recent ambient survey events

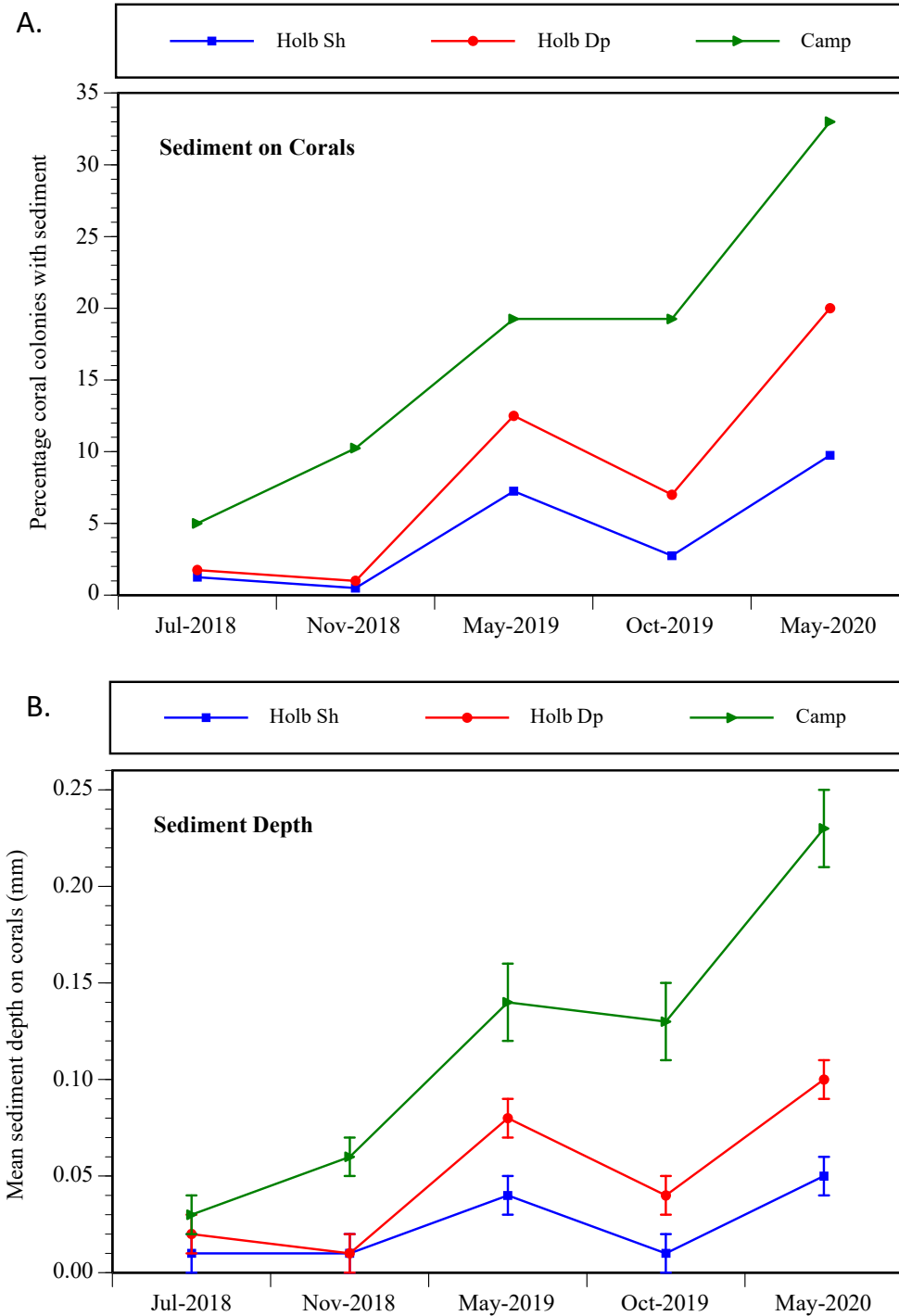
Location:	Holbourne Shallow.		Holbourne Deep		Camp Is.	
<b>PERCENT OF TOTAL COLONIES WITH SEDIMENT LOAD</b>						
May 2019	7.3%		12.5%		19.3%	
Oct 2019	2.8%		7.0%		19.3%	
May 2020	9.8%		20.0%		33.0%	
<b>MEAN MAXIMUM SEDIMENT DEPTH (mm)</b>						
May 2019	0.04	<i>0.14</i>	0.08	<i>0.25</i>	0.14	<i>0.35</i>
Oct 2019	0.01	<i>0.04</i>	0.04	<i>0.18</i>	0.13	<i>0.38</i>
May 2020	0.05	<i>0.20</i>	0.10	<i>0.20</i>	0.23	<i>0.39</i>

Figures are grand mean sediment depth in mm with standard deviations in italics where appropriate.

**Table 9.** Abbot Point Fringing Reefs: Changes in sediment depth on corals between the last three ambient surveys: Anova Results

Factor:	Location	Site (L)	Time	L x T	S x T(L)
Coral sediment changes	***	***	***	**	***

NS = not significant; \* = 0.05>p>0.01, \*\* = 0.01>p>0.001; \*\*\* = p<0.001



**Figure 17.** Changes in Number of Corals with Sediment Load and Sediment Depth. Graphs show percentage of the 400 coral colonies examined in each location that had measurable sediment on part of the surface during each survey and the mean depth in mm of that sediment for the last five ambient surveys. Error bars where appropriate are standard errors. Holb Sh = Holbourne Island shallow stratum; Holb Dp = Holbourne Island deep stratum.

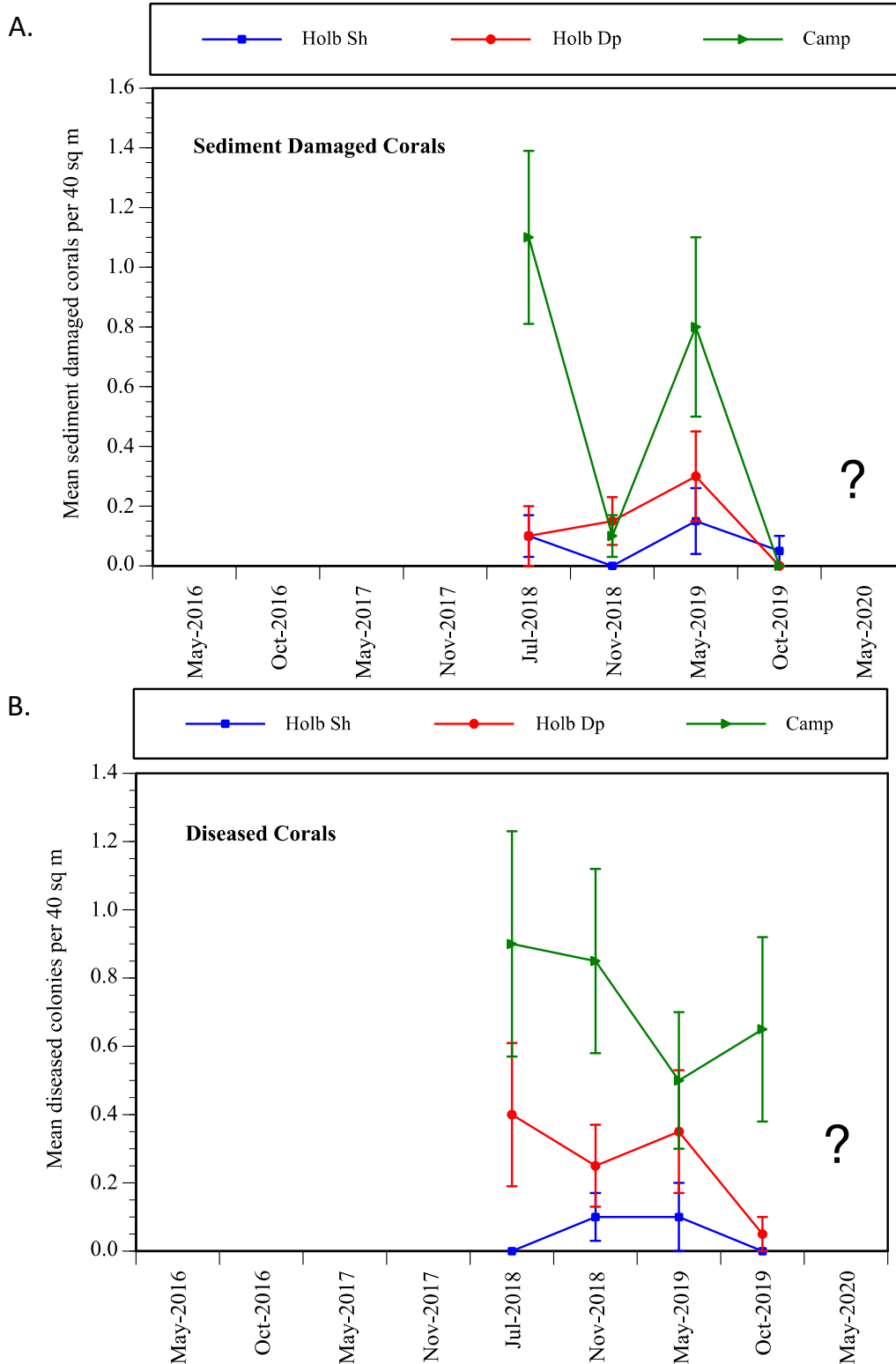
### 3.6 Sediment Damage and Disease in Coral Colonies

It was not possible to record reliably the coral colonies that were damaged by disease or sediment accumulation during the May 2020 survey because of the high number of bleached corals. Damage scars did not show up on bleached corals even with careful examination. This discussion is limited to the May and October 2019 surveys.

Heavy sediment deposition on living coral can cause patches of mortality on the coral surface. The number of sediment damaged coral colonies decreased significantly between May 2019 and October 2019. This decrease was greatest on Camp Island, where numbers were significantly higher than in the Holbourne locations, and the Location x Time interaction was also significant (Table 6, Figure 18). The number of sediment damaged corals was significantly higher on Camp Island (Table 7), but fluctuated significantly giving significant Time and Time x Location factors (Figure 18, Table 7). The fluctuations in levels of coral sediment damage on Camp Island did not relate to the measures of coral sediment load. The number of corals with surface sediment and sediment depth did not change significantly between May and October 2019 at Camp Island but the level of sediment damage decreased markedly over the same time period. Corals can remove sediment from their surface and it is only when these processes are overloaded, such as during extended periods of rough weather or during extreme weather events, that any mortality results. One-off measures of sediment depth are useful but do not give an indication of the temporal extent of sediment load.

A small number of diseased corals are present in most coral reef communities. The coral groups most often affected by disease in the Abbot Point region were *Acropora* and *Montipora*, but pocilloporid corals were also sometimes damaged by disease. Most disease recorded was atramentous necrosis of encrusting *Montipora* colonies but there was also a low level of brown-band disease of *Acropora* corals. Disease levels were low during the 2019 ambient surveys with a grand mean of 0.3 diseased corals per 40 sq m (Table 6). There were significantly more diseased corals in the Camp location than in the Holbourne locations during these ambient surveys (Table 6). These were no significant Time or Location x Time effects (Table 7).

Although there have been significantly more health issues recorded on Camp Island than in the Holbourne locations this does not take account of the different abundance of corals in the three locations. Mean coral cover was only about 2% in the shallow Holbourne stratum and 8% in the deep Holbourne stratum but was about 25% on Camp Island during the 2019 surveys. Overall health issues relative to coral abundance were actually about two times higher in both Holbourne locations than on Camp Island.



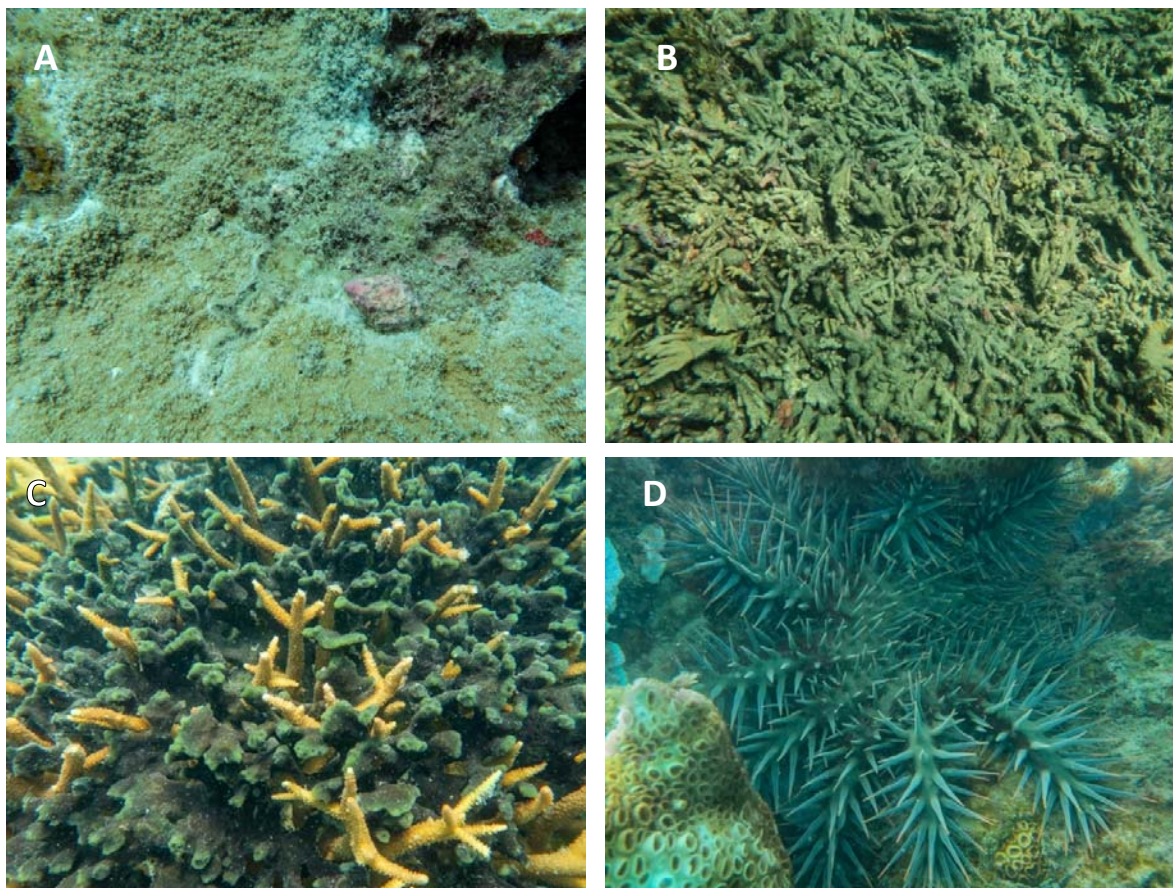
**Figure 18.** Changes in density of sediment damaged and diseased coral colonies. Graphs show grand mean density of diseased coral colonies and sediment damaged corals per 40sq m from four sites of five 20 x 2m transects in each location from four of the last five ambient surveys. Error bars are standard errors. Values in May 2020 could not be recorded because of the extensive coral bleaching. Holb Sh = Holbourne Island shallow stratum; Holb Dp = Holbourne Island deep stratum.

### 3.7 Other Coral Health Issues

Several other coral health issues were also recorded during these ambient surveys. A small number of coral colonies were recorded as damaged due to grazing by the coralivorous *Drupella* snails (Figure 19). This damage was at a very low level with only 1-2 damaged colonies recorded in total for the two locations during each survey. Low *Drupella* numbers were also recorded during previous surveys of these locations except for the October 2017 post-Debbie survey at the Holbourne East sites where 113 *Drupella* snails were recorded in three corals. Given the big reduction in coral cover caused by Cyclone Debbie *Drupella* snails had probably temporarily concentrated in a few remaining coral colonies at this time.

Physical damage was also recorded at several of the locations during these surveys. One of the Camp Island east sites is shallow and exposed to the SE winds. There are usually some broken branching coral colonies at this location during each survey (Figure 19). The broken branches are still living and eventually regrow into new colonies or fuse with the parent colonies.

During the May 2019 survey a small aggregation of very large crown-of-thorns sea stars (COTs) had moved into the West 2 Deep Holbourne site. More than ten individuals were seen in the area with four recorded in the five 20 x 2m coral health transects. These COTs had moved into the West 1 deep Holbourne site by October and had damaged a mean of 7.2 coral colonies per 40 sqm at that site. Several individuals were still present at this same site in May 2020 and continued to cause a small amount of coral damage (Figure 19).



**Figure 19.** Coral health issues: A. *Drupella* snails grazing on an encrusting *Montipora* coral at the Holbourne deep location. B. Rubble and broken coral fragments caused by wave action in the Camp Island east 2 site. C. The sponge *Haliclona* growing amongst an *Acropora* colony in the Camp Island location. D. A small number of *Acanthaster* sea stars were still damaging corals in the Holbourne deep location in May 2020.



### 3.8 Coral Recruitment Patterns

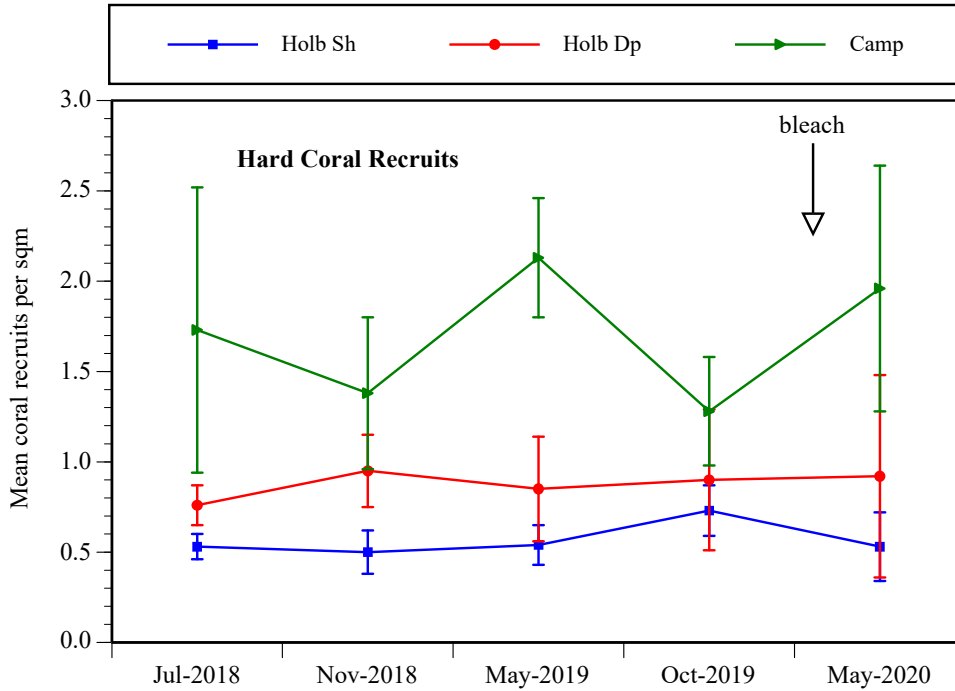
Numbers of hard coral recruits less than 10 cm in diameter were higher on Camp Island reefs than in the two Holbourne locations during these ambient surveys (Figure 20, Table 10). Grand mean recruit densities in May 2020 were about 2.0 per sq m on Camp Island, 0.9 per sq m in the Holbourne deep location and a low 0.5 per sq m on Holbourne shallow which is similar to last year at this location. Holbourne is on the low side and Camp on the high side of means ranging from 0.6 to 1.8 per sq m from surveys of other GBR fringing reef areas using the same method (A.M. Ayling unpublished data). Although there is lots of free space in the Holbourne shallow location as a result of Cyclone Debbie damage that appears suitable for coral settlement recruit numbers have remained very low in this location. Recruit numbers did not change significantly over the twelve months covered by these three surveys (Table 10). The apparent nominal dip in recruit numbers on Camp Island in October 2019 was probably due to dense algal growth making accurate assessment of recruits unreliable at several of the sites.

The dominant coral groups represented in the recruit population for the shallow Holbourne Island location were *Acropora* species, faviids and poritids while most coral groups were well represented in the Holbourne deep recruit population. On Camp Island *Acropora* corals and *Turbinaria* were the dominant recruit groups with *Acropora* corals accounting for over 44% of total recruit numbers (Figure 21). Proportions of the dominant acroporid (*Acropora* + *Montipora*) and *Turbinaria* recruits during these surveys were 56% and 21% respectively of total recruits. This compares to approximately 33% and 27% respectively during the two previous post-Debbie surveys conducted by AIMS (AIMS 2018).

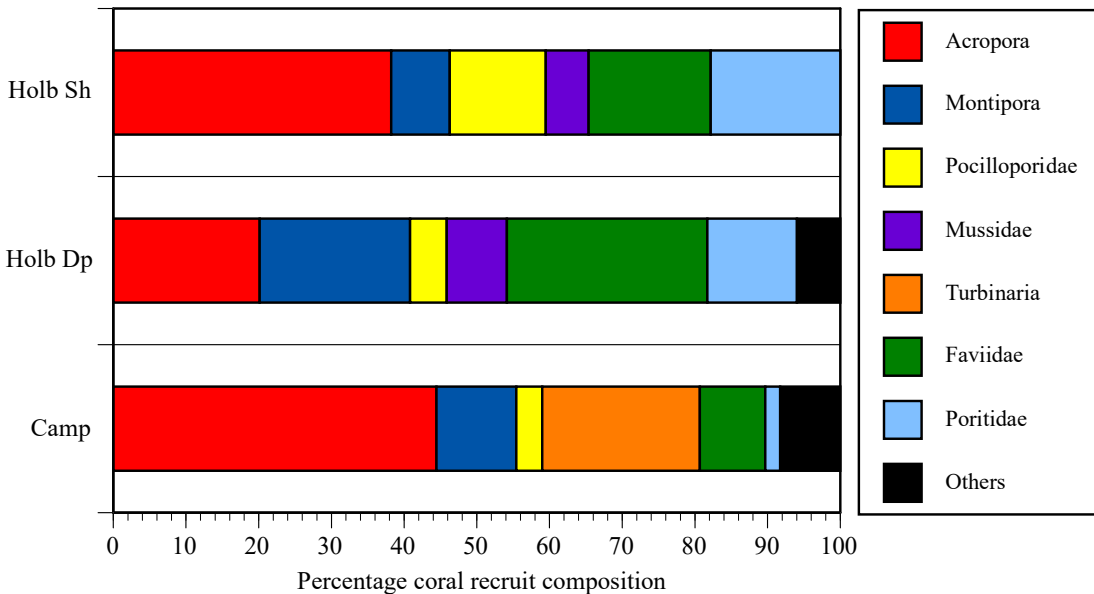
**Table 10.** Abbot Point Fringing Reefs: Patterns in the Density of Hard Coral Recruits Between the Last Three Ambient Surveys: ANOVA Results

	Factor:	Location	Time	L x T
Hard coral recruits		*	NS	NS

NS = not significant; \* = 0.05 > p > 0.01, \*\* = 0.01 > p > 0.001; \*\*\* = p < 0.001



**Figure 20.** Changes in density of hard coral recruits over the ambient surveys. Graphs show mean density of hard coral recruits per m<sup>2</sup> from four sites in each location for the past five ambient surveys. Error bars are standard errors. Holb Sh = Holbourne Island shallow stratum; Holb Dp = Holbourne Island deep stratum.



**Figure 21.** Composition of the hard coral recruit population in the three locations over the last three ambient surveys. Graphs show mean percentage composition of the major groups of coral recruits from the three locations. Composition is averaged across the three surveys

### 3.9 Coral Community Indicators

The Reef Report Card uses a series of indicators to provide an unbiased scale of overall reef condition and resilience. The full reef report card uses five indicators to derive report card scores (Thompson et al. 2016) but two of these require multiple annual observations and other information and are not used here. This follows the precedent set by AIMS in their report on the first four Abbot Point ambient surveys (AIMS 2018). The three indicators used were: Coral Cover; Juvenile Density and Macroalgae Proportion. For details of methods for these indicators see AIMS (2018) and Thompson et al. 2016). Note the coral cover recorded and reported in this report at both locations since 2018 uses the line intercept method and therefore may show slight differences in final scores compared to coral cover estimated from photoquadrats (the AIMS method). A comparison of photoquadrat versus line intercept for each benthic category is under way and will help explain any differences between score results between those shown in Table 11 and those incorporated into the regional report card by AIMS in the 2019/20 period. Future NQBP monitoring will be carried out using the photoquadrat method and coral cover estimates and scores will be adjusted based on this method review.

At the time of the October 2019 survey all the Holbourne Island sites had a ‘very poor’ reef index (Table 11). This was driven by the unusually high macroalgae cover recorded at all Holbourne sites during this survey. By the time of the May 2020 survey macroalgae cover had reduced to normal, very low levels, on Holbourne and reef indices had improved to ‘poor’ in the shallow sites and ‘satisfactory’ in the deep sites. The Camp Island reefs were rated ‘very poor’ on the Eastern sites and ‘poor’ on the Western sites in October 2019 but were all ‘very poor’ in May 2020 due to the reduction in coral cover caused by the coral bleaching event.

**Table 11.** Reef condition and indicator values during the last two ambient surveys.

Location	Survey	Coral cover	Macroalgae proportion	Juvenile density	Coral cover score	Juvenile score	Macro-algae score	Overall Index
Holbourne shallow E	Oct 2019	3.4%	10.3%	0.75	0.06	0.06	0	0.04
	May 2020	3.1%	0%	0.66	0.06	0.05	1	0.37
Holbourne shallow W	Oct 2019	1.8%	37.7%	1.02	0.02	0.08	0	0.03
	May 2020	1.8%	0.7%	0.56	0.02	0.04	1	0.36
Holbourne deep E	Oct 2019	8.9%	16.3%	0.34	0.19	0.03	0	0.07
	May 2020	10.1%	0%	0.63	0.21	0.05	1	0.42
Holbourne deep W	Oct 2019	6.4%	12.3%	1.57	0.10	0.12	0	0.07
	May 2020	5.0%	0.3%	1.40	0.08	0.11	1	0.40
Camp shallow E	Oct 2019	10.2%	66.8%	0.77	0.14	0.06	0	0.06
	May 2020	9.7%	62.9%	1.36	0.13	0.10	0	0.08
Camp shallow W	Oct 2019	38.2%	58.6%	2.09	0.51	0.16	0	0.22
	May 2020	25.0%	44.9%	2.86	0.33	0.22	0	0.18

**Cover score range:** ■ Very Poor = 0 to ≤ 0.2 | ■ Poor = > 0.2 ≤ 0.4 | ■ Moderate = > 0.4 ≤ 0.6 | ■ Good = > 0.6 ≤ 0.8 | ■ Very Good = > 0.8 | ■ No score/data gap | ■ Not applicable

### 3.10 Benthic Community Images

Examples of the benthic community structure at each location and examples of coral health impacts are provided in Figure 22 to Figure 39.



**Figure 22.** Clumping *Acropora* coral with dense growth of *Padina* macroalgae in the deep Holbourne Island location during the October 2019 ambient survey.



**Figure 23.** Macroalgae, mainly *Asparagopsis* (above) and *Padina*, covered 10% of the substratum in the shallow Holbourne Island sites and almost 15% of the deep sites in October 2019.



**Figure 24.** Bare substratum suitable for new coral recruitment in the shallow Holbourne location still has low numbers of new coral recruits more than 3 years after Cyclone Debbie.



**Figure 25.** Completely bleached *Porites* colony in the deep Holbourne location during the May 2020 survey.



**Figure 26.** Partly dead *Stylophora* colony at Holbourne Island in May 2020. This colony has been bleached and part is recovering but part has died.



**Figure 27.** During the early 2020 bleaching event both *Millepora* (left) and the soft coral *Briareum* (right) were badly bleached as well as many hard corals. Holbourne deep location.



**Figure 28.** A few large *Acanthaster* sea stars were present at the deep Holbourne west location during both of the latest ambient surveys.



**Figure 29.** Dense forest of *Sargassum* macroalgae at the East 1 Camp Island site in October 2019. Macroalgae cover was lower and less lush during the May 2020 survey.



**Figure 30.** Rich cover of healthy *Acropora* staghorn corals at the West 1 Camp Island site during the October 2019 survey. Hard coral cover was almost 50% at this site.

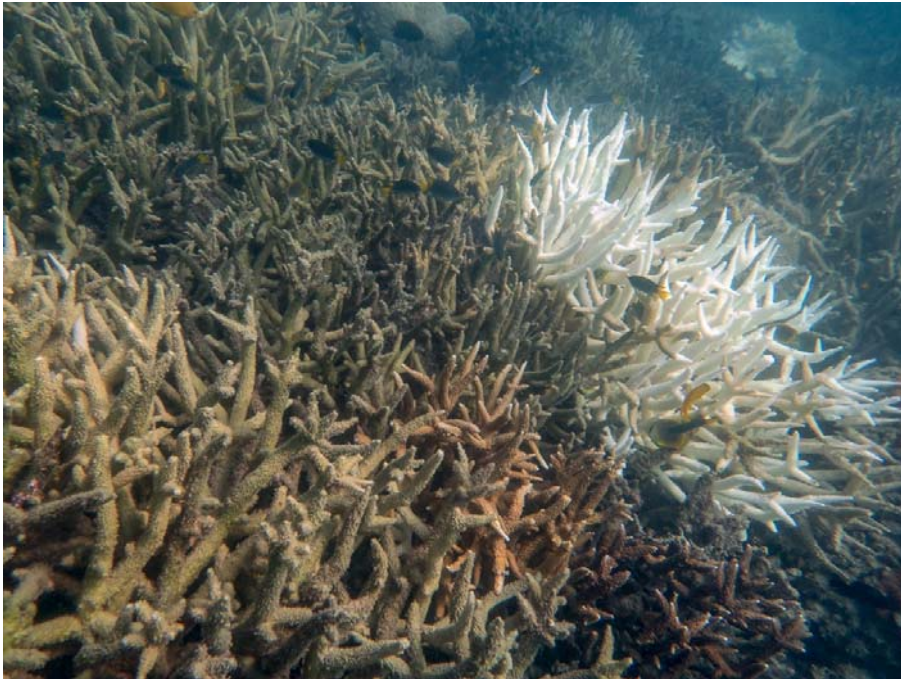


**Figure 31.** A mixture of healthy *Montipora* and *Acropora* corals at the Camp Island location in October 2019.





**Figure 32.** Badly bleached staghorn *Acropora* at the West 1 Camp Island site during the May 2020 survey. Parts of the colony in the foreground and right have died from bleaching stress.



**Figure 33.** Freshly dead and bleached *Acropora* staghorn at the East 1 Camp Island site. The orange-brown patch of *Acropora* (lower right) is still healthy.



**Figure 34.** Bleaching at Camp Island: recovering *Acropora* colony (centre) with a largely dead *Acropora* colony (lower right). Healthy *Montipora* colony (lower right), bleached *Montipora* (upper right) and fresh dead *Montipora* (lower left).



**Figure 35.** Healthy colony of *Pavona decussata* at the West 1 Camp Island site (left) alongside a bleached massive *Porites* colony.



**Figure 36.** Completely bleached *Montipora* colony at the West 1 Camp Island site during the May 2020 survey.



**Figure 37.** *Lobophyllia* colony at the West 1 Camp Island site. Individual polyps are either bleached, recovered or dead.



**Figure 38.** Some patches of reef in the Camp West 1 site still had reasonable coral cover with low levels of bleaching mortality in May 2020.



**Figure 39.** Low level vertical view of the East 2 Camp Island site showing the large number of bleached *Montipora* colonies in the benthic community in May 2020.

## 4 DISCUSSION

### 4.1 Benthic Cover during the last three Ambient Surveys

Sites were originally selected at Holbourne Island according to the AIMS inshore fringing reef sampling protocol with transects in two depth strata: 2m below LAT and 5m below LAT. This is appropriate on inshore reefs where turbid water leads to strong depth stratification of reef communities but is not ideal on less turbid offshore reefs such as around Holbourne Island. The AIMS long-term reef monitoring protocol of a single depth stratum at about 8m below LAT is recommended as more appropriate around this more offshore island. Coral communities on the SW face of Holbourne below the 5m depth stratum were less impacted by Cyclone Debbie (Figure 28) and a deeper stratum would have documented this. Another issue with site selection around Holbourne Island is that all the present sites are on the South and West facing sides of the island with no sites on the NE face. As a result all eight sites were severely impacted by Cyclone Debbie whereas reefs on the NE face of the island were far less impacted (A.M. Ayling personal observations). It is therefore recommended that the Holbourne sites be changed moving forward with a single deep stratum incorporating two existing deep sites (E2, W1) on the SW face of the island and two new deep sites on the NE face of the island to give more balance to the overall reef community condition monitoring. In order to maintain capacity to integrate monitoring data into the broader regional report cards PSD should be measured during the first new site survey event. These data will be beneficial in interpretation of the new sites sediment hydrodynamics.

The four sites at Camp Island were still very different in terms of macroalgal and coral cover during these surveys, with mean macroalgal cover ranging from less than 1% at the West 1 site to just over 50% at the East 1 site. Hard coral cover was equally variable with less than 5% cover at the East 1 site to almost 30% at the West 1 site. Sites were selected by AIMS haphazardly from the surface on areas of substrate suitable for corals (AIMS 2018) but a slight repositioning of several of the sites would have given more consistency and increased the grand mean coral cover significantly. Although the present site selection does cover a good range of possible reef types from algal dominated to hard coral dominated, it is future trajectories of coral dominated sites that most aligns with the objectives of this ambient program.

Benthic communities have been very stable on both Holbourne Island locations since Cyclone Debbie. Coral communities at all survey sites around this island had been decimated by Cyclone Debbie (AIMS 2018) and recovery was still on hold with a nominal decrease in hard coral cover over these three ambient surveys. Previous fringing reef surveys have suggested that there is rapid recovery of hard coral cover following cyclone events (Sato et al. 2018; Ayling and Ayling 2005), with damaged corals putting on a growth spurt to recover lost space. This has not happened on Holbourne reefs following Cyclone Debbie. Surviving corals have been slow to re-grow and recruitment of new coral colonies has been unusually slow. Similar slow recovery was noted by AIMS during the decade after COT outbreaks damaged coral communities around Holbourne Island in 1987 (AIMS 2018). The isolation of this reef in the middle of the shipping channel may be partly responsible: it is at least 40 km inside the band of mid-shelf reefs in this region of the GBR and about 30 km from the inner fringing reefs. Overall, the declines in hard coral at the Holbourne locations are consistent with documented impacts on coral reefs from acute storm events (Lam et al. 2018).

Although Camp Island is only 50 km west of Holbourne Island damage from Cyclone Debbie was minimal at this inshore island location; attributed to TC approach angle and wave height and direction as compared to reef slope aspect. Hard coral communities at Camp Island are dominated by fast growing *Acropora* and *Montipora* species that are particularly sensitive to extreme wave action but these communities showed little evidence of damage following the cyclone (AIMS 2018).

The major change recorded during the 2019/2020 ambient surveys covered in this report was the strong increase in macroalgal cover at all three locations between the May 2019 and October 2019 surveys and the

equally strong fall by the time of the May 2020. In addition, the severe bleaching episode recorded during the first three months of 2020 had already impacted coral cover, with slight decreases in the already low coral cover at both Holbourne locations and a 33% reduction in the Camp Island location. Many corals were still bleached at the time of the May 2020 survey and coral cover may face further declines before future surveys. Cover of the dominant *Acropora* corals at Camp Island reduced by 50% over these ambient surveys. Broad-scale surveys of the GBR during this early 2020 warming event found widespread bleaching both at inshore and mid-shelf reefs, which was most prevalent in the central and southern sectors (Townsville to Gladstone; ARC Centre of Excellence for Coral Reef Studies) and therefore in line with this report's findings.

#### 4.2 Sedimentation and Coral Damage

Corals on inshore fringing reefs must deal with heavy sedimentation as part of normal environmental conditions. Inshore waters become very turbid from resuspended sediment during any strong wind event and this sediment settles on all fringing reef corals. These corals are able to actively remove surface sediment unless rates remain very high for long periods or corals are under stress and have reduced sediment removal capacity (e.g. during bleaching). It takes extreme events like cyclones or prolonged rough weather to overwhelm coral colonies natural sediment removal mechanisms. In these cases sediment may accumulate in depressions on the surface of vulnerable coral colonies and eventually cause small patches of mortality. Such dead patches occur naturally on most fringing reefs and are usually repaired, once sediment levels decrease, by regrowth from the edges of the damaged patch. The Holbourne locations, being further offshore, in a generally less turbid water mass and with lower levels of silt in the bottom sediment (AIMS 2018) have much lower rates of sedimentation and sediment damage to corals than most fringing reefs. Camp Island, although only 2 km from the coast and the Elliot River mouth, appears to be in an unusually clear water mass most of the time and also has relatively low rates of sedimentation and sediment damage. AIMS reported that they experienced 5m+ underwater visibility during their surveys and Sea Research has recorded 5-10m underwater visibility on all five visits to the location. This clear water mass appears to be restricted to the immediate vicinity of Camp Island with normal turbid inshore water encountered only 500 m east of the island on most visits. The reasons for this are not clear but may relate to the shallow depths around the island. The percentage of fine particles (<64 microns) in the sediment at the Camp Island sites was only around 8% (AIMS 2018) roughly equivalent to measurements from the 5 m depth stratum at the more offshore Holbourne Island.

Both the percentage of coral colonies with sediment and the mean depth of that sediment was higher during the latest survey than during any previous survey. It seems likely that the bleaching stress had interfered with the ability of corals to remove sediment from their surface, leading to an unusual number of corals with recorded surface sediment.

#### 4.3 Other Sources of Coral Mortality

Levels of coral disease during these ambient surveys were in line with levels recorded over the thirteen years spanned by the long-term surveys at the Mackay/Hay Point locations, with a grand mean of 0.32 diseased colonies per 40 sqm. Corals usually affected by disease during these surveys were acroporids and a small number of pocilloporids. On Camp Island all recorded disease was atramentous necrosis of *Montipora* colonies at densities of 0.5-1.0 diseased colony per 40 sqm. Disease levels were not recorded during the May 2020 survey as the majority of *Montipora* colonies were bleached and it was not possible to detect the white disease patches. AIMS also recorded atramentous necrosis of *Montipora* corals at Camp Island with high numbers in November 2017 (3.3 colonies diseased per 40 sqm). Coral disease is usually more prevalent when water temperatures and nutrient levels are higher (AIMS 2018). A small number of corals are affected by disease on most fringing reef locations at any one time and this rarely causes significant coral mortality (Ayling and Ayling 2005). Black band disease in *Turbinaria* and *Psammocora* corals was responsible for a small but significant reduction in overall coral cover in the Hay Point region during the summer of 2006 (GHD 2006) and the atramentous necrosis mentioned above caused a slight reduction in *Montipora* cover at Camp Island over the four surveys between July 2018 and October 2019.

Three juvenile *Acanthaster* sea stars (COTs) were recorded by AIMS damaging a few corals at one of the deep Holbourne East sites in Oct 2017 after Cyclone Debbie. No COTs were recorded at any of the Holbourne East sites during the surveys reported here but a small cluster of very large adult COTs were present in the West Holbourne deep location in May 2019. At least 10 COTs were seen in the Holbourne West 2 deep site with over 6 corals per 40 sqm transect damaged by COT grazing. These COTs appear to be a spill-over from a low-level infestation on the NE face of Holbourne Island (A.M. Ayling personal observations). This is further damaging coral communities that are struggling to recover from Cyclone Debbie damage and will slow recovery.

Large numbers of coral grazing *Drupella* snails were recorded by AIMS in the Holbourne East deep sites in October 2017 but only a few of these snails were recorded during the three 2019/2020 surveys reported here. Cyclone Debbie reduced coral cover markedly on Holbourne and this has the effect of concentrating low densities of *Drupella* into the few remaining corals. This can lead to a pulse of coral damage but the *Drupella* reduce in numbers as they destroy the corals they have retreated into (A.M. Ayling personal observations).

#### **4.4 Implications of Coral Assessment**

Recent cyclonic impacts have reduced coral cover significantly on the Holbourne Island locations. The slow rate of recovery of hard coral communities on these fringing reefs in the 38 months since Cyclone Debbie is a cause for concern but is in line with the decadal long recovery times reported by AIMS following COT grazing damage to Holbourne coral communities in 1987. Further damage caused by COT grazing and coral bleaching is now exacerbating this slow recovery. The present Holbourne Island survey sites are all on the continuous fringing reef that sweeps in a crescent around the south and west faces of the island. Observations by A.M. and A.L. Ayling on the northeast face of the island show that corals were not as badly impacted by Cyclone Debbie on those reefs. A more balanced view of coral recovery on Holbourne as a whole may be available if surveys are confined to the deep stratum in future and extended to include reefs on the northeast face of the island.

Until the 2020 coral bleaching episode coral communities on Camp Island appeared to be healthy and growing significantly although smothering by algal growth may be a seasonal problem at this location. There is no evidence at this stage that macroalgae are increasing on Camp Island reefs at the expense of coral cover. It is probable that the algal communities recorded during these surveys have been present on this island for many decades. However, coral bleaching has now significantly reduced coral cover on Camp Island, especially the dominant *Acropora* species. Coral cover has been reduced by a mean of 33% and further declines may be recorded as corals that were bleached but still alive during the May 2020 survey die off.

## 5 REFERENCES

Advisian. 2016. Port of Mackay and Hay Point Ambient Coral Monitoring: March 2015 – May 2016. Prepared on behalf of Ports Corporation of Queensland.

Ayling, A. M. and Ayling, A. L. 1995. A preliminary survey of benthic communities on fringing reefs in the middle Cairns Section. Unpublished report submitted to the Great Barrier Reef Marine Park Authority.

Ayling, A. M. and Ayling, A. L. 2002. Long term monitoring program for marine benthos in the vicinity of Keswick Island development (Whitsunday Island Group): baseline survey, Unpublished report to the Great Barrier Reef Marine Park Authority. 18 pp.

Ayling, A. M. and Ayling, A. L. 2005. The Dynamics of Cairns and Central Section Fringing Reefs, Unpublished report to the Great Barrier Reef Marine Park Authority. 81

BOM. 2020. Daily rainfall measured at the Mackay Airport (Station number 033045).

GHD. 2006. Port of Hay Point Apron Areas and Departure Path Capital Dredging Environmental Management Plan. Prepared on behalf of Ports Corporation of Queensland.

Jonker, M. M., Johns, K. K. and Osborne, K. K. 2008. Australian Institute of Marine Science Standard Operational Procedure Number 10 - Surveys of benthic reef communities using underwater digital photography and counts of juvenile corals. AIMS.

Lam, V. Y., Chaloupka, M., Thompson, A., Doropoulos, C. and Mumby, P. J. 2018. Acute drivers influence recent inshore Great Barrier Reef dynamics. *Proceedings of the Royal Society B*, **285**: 20182063

Mapstone, D. D., Choat, J. H. and Cumming, R. L. 1989. The fringing reefs of Magnetic Island: Benthic biota and sedimentation – a baseline survey. Unpublished report to the Great Barrier Reef Marine Park Authority, 88 pp.

Ortiz, J.-C., Wolff, N. H., Anthony, K. R., Devlin, M., Lewis, S. and Mumby, P. J. 2018. Impaired recovery of the Great Barrier Reef under cumulative stress. *Science Advances*, **4**: eaar6127

Ostrander, G. K., Armstrong, K. M., Knobbe, E. T., Gerace, D. and Scully, E. P. 2000. Rapid transition in the structure of a coral reef community: the effects of coral bleaching and physical disturbance. *Proceedings of the National Academy of Sciences*, **97**: 5297-5302

Ports and Coastal Environmental. 2013. Port of Mackay Dredging 2013: Coral Monitoring Program. Prepared on behalf of North Queensland Bulk Ports Corporation.

Sato, Y., Bell, S. C., Nichols, C., Fry, K., Menéndez, P. and Bourne, D. G. 2018. Early-phase dynamics in coral recovery following cyclone disturbance on the inshore Great Barrier Reef, Australia. *Coral Reefs*, 1-13

Sea Research. 2017. Ports of Mackay and Hay Point Ambient Coral Monitoring Surveys: 2016-2017. Unpublished report to North Queensland Bulk Ports Corporation.

Thompson, A., Costello, P., Davidson, J., Logan, M., Coleman, G. and Gunn, K. 2018. Marine Monitoring Program. Annual Report for inshore coral reef monitoring: 2016 – 2017. Great Barrier Reef Marine Park Authority, Townsville, 148 pp.



Ambient Coral Monitoring Program Report 2019/2020 – [TropWATER](#) Report no. 20/45

Waltham, N., McKenna, S., York, P., Devlin, M., Campbell, S., Rasheed, M., Da Silva, E., Petus, C. and Ridd, P. 2015. Port of Mackay and Hay Point Ambient Marine Water Quality Monitoring Program (July 2014 to July 2015). Centre for Tropical Water and Aquatic Ecosystem Research (TropWATER) Publication 15/16, James Cook University, Townsville, 96 pp.

WIMP. 2020. Queensland Government Water Monitoring Information Portal for The Pioneer River at Dumbelton Weir (Station Id: 125016A)