

PORT OF MACKAY



A NEW CONTAINER LOGISTICS

ADVANTAGE FOR CENTRAL QUEENSLAND

FULL-SERVICE CONTAINER DEPOT



OPPORTUNITY OVERVIEW

North Queensland Bulk Ports Corporation (NQBPC) is constructing a full-service Container Depot at the Port of Mackay to catalyse growth in containerised trade.

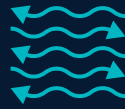
The facility will deliver heavy-duty pavement, reefer capability, and a scalable yard layout with strong landside connectivity, improving reliability for regional exporters and importers and accelerating long-term supply chain diversification across Northern Queensland. Construction is planned to commence in early 2026 with completion later in the year.



CONTAINER DEPOT

STRATEGIC BENEFITS

The Container Depot at the Port of Mackay will span over 13,000 square metres and will deliver significant strategic advantages:



TRADE DIVERSIFICATION

Introducing container handling builds on Mackay's bulk strengths to open new opportunities across agriculture, resources, food and energy.



SUPPLY CHAIN RESILIENCE

Stronger regional supply chain with faster turnarounds, lower costs, and less reliance on capital city ports.



SCALABLE GROWTH

With heavy-duty pavement, reefer capacity, and efficient empty container management, the depot will provide scalable operational capacity.



EMISSIONS REDUCTION

The Port of Mackay Container Depot enables more efficient trade flows, reducing inland transport emissions, and will incorporate design features that are future ready for digitisation.

WHARF 1

OPERATIONAL FEATURES

The Container Depot will be a scalable facility capable of handling both full and empty containers.



REEFER TOWER

A dedicated reefer tower with 48 plugs will provide robust capacity for refrigerated cargo, with the ability to double the number of plugs as trade volumes increase.



OPTIMISED FOR FLEXIBLE, SAFE AND EFFICIENT OPERATIONS

The depot will be constructed on heavy-duty pavement, and its layout will be optimised for flexible and efficient operations. It will include adaptable traffic lanes and clearly defined safety buffers to ensure safe and reliable movement of containers.



DIRECT ROAD ACCESS

Designed to enable seamless import and export activity, the depot will have direct road access to the northern Queensland hinterland.



ITV FLOW

To ensure integrated container flows, the depot will also manage all wharf transfers using high-productivity Intra Terminal Vehicles (ITV). This approach will ensure that all horizontal container movements between the quay and the yard are seamlessly incorporated into landside gate operations, creating a continuous, congestion-free flow. Vessel operations themselves will remain coordinated between the shipping lines and stevedores, while the ITV-supported transfer process guarantees efficient handoff and yard management.

KEY FEATURES

Strategic location and layout optimised for flexible import and export deliveries.

CONTAINER DEPOT

Seamless integration of quay-to-yard transfers via ITVs to ensure efficiency and reliability.

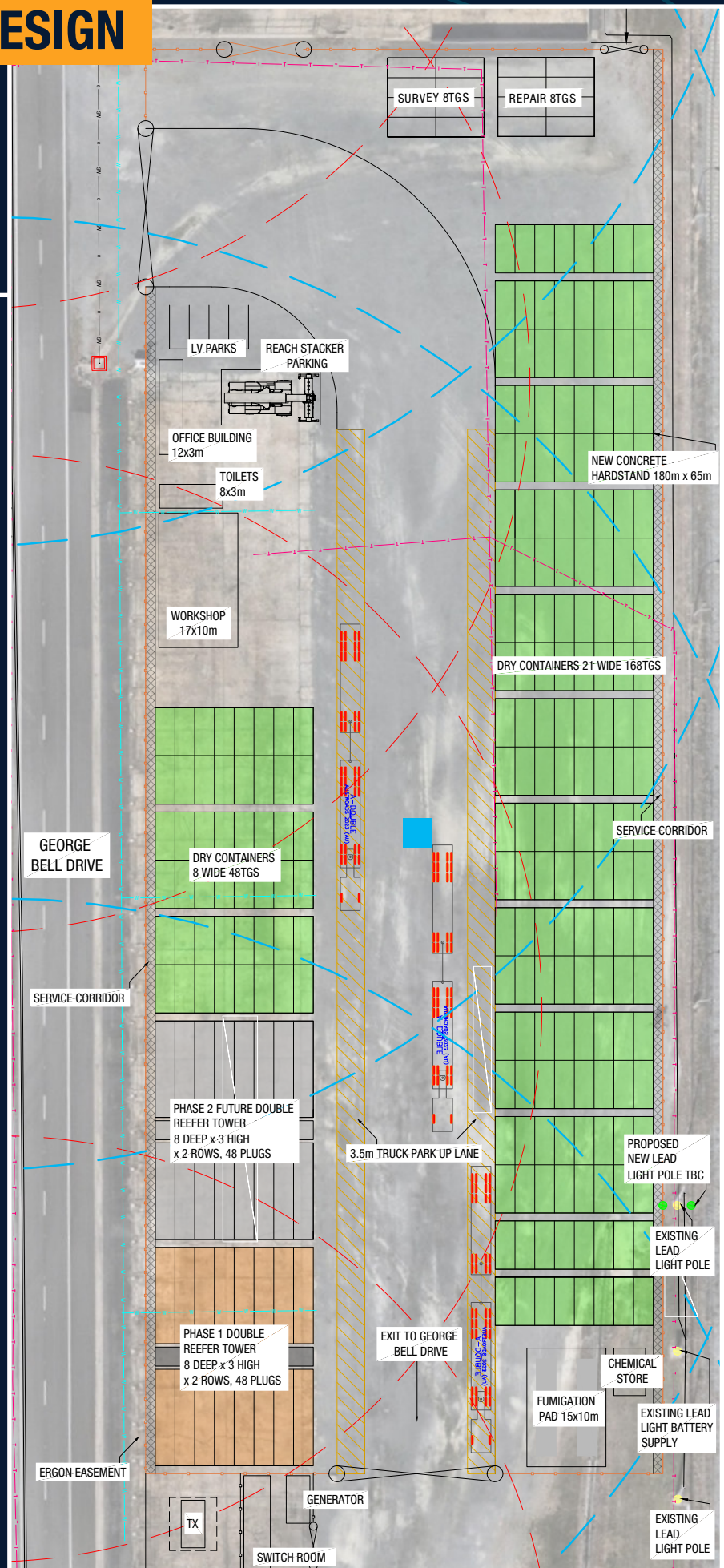
PROPOSED WHARF 1 EXTENSION



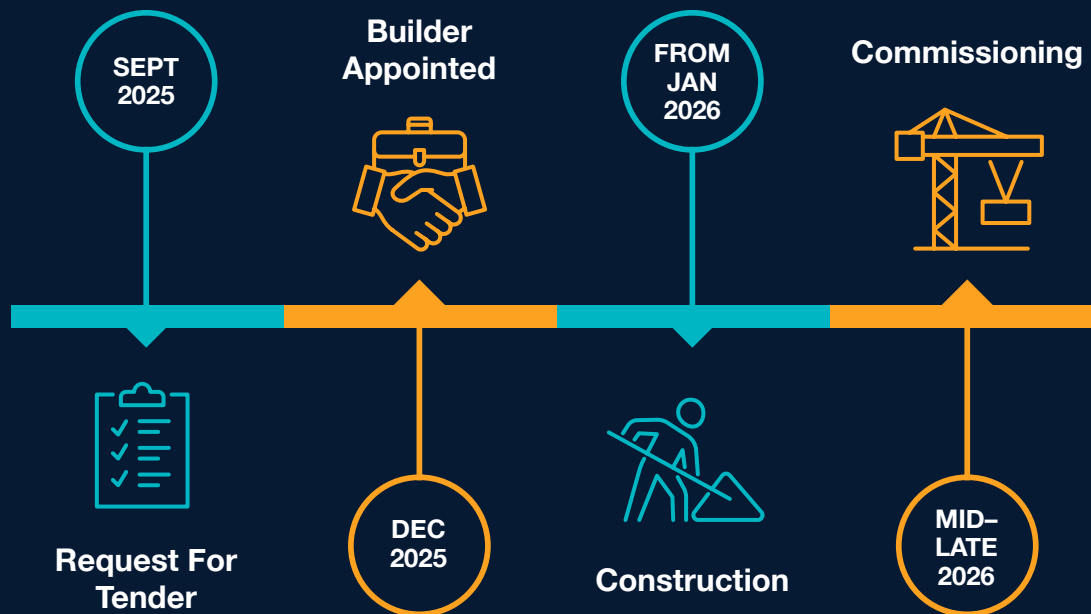
ENGINEERING DESIGN

LEGEND

Existing Fencing	
Hydrant Radius 70m	
Hydrant Radius 100m	
Telstra Cable	
Water Pipe	



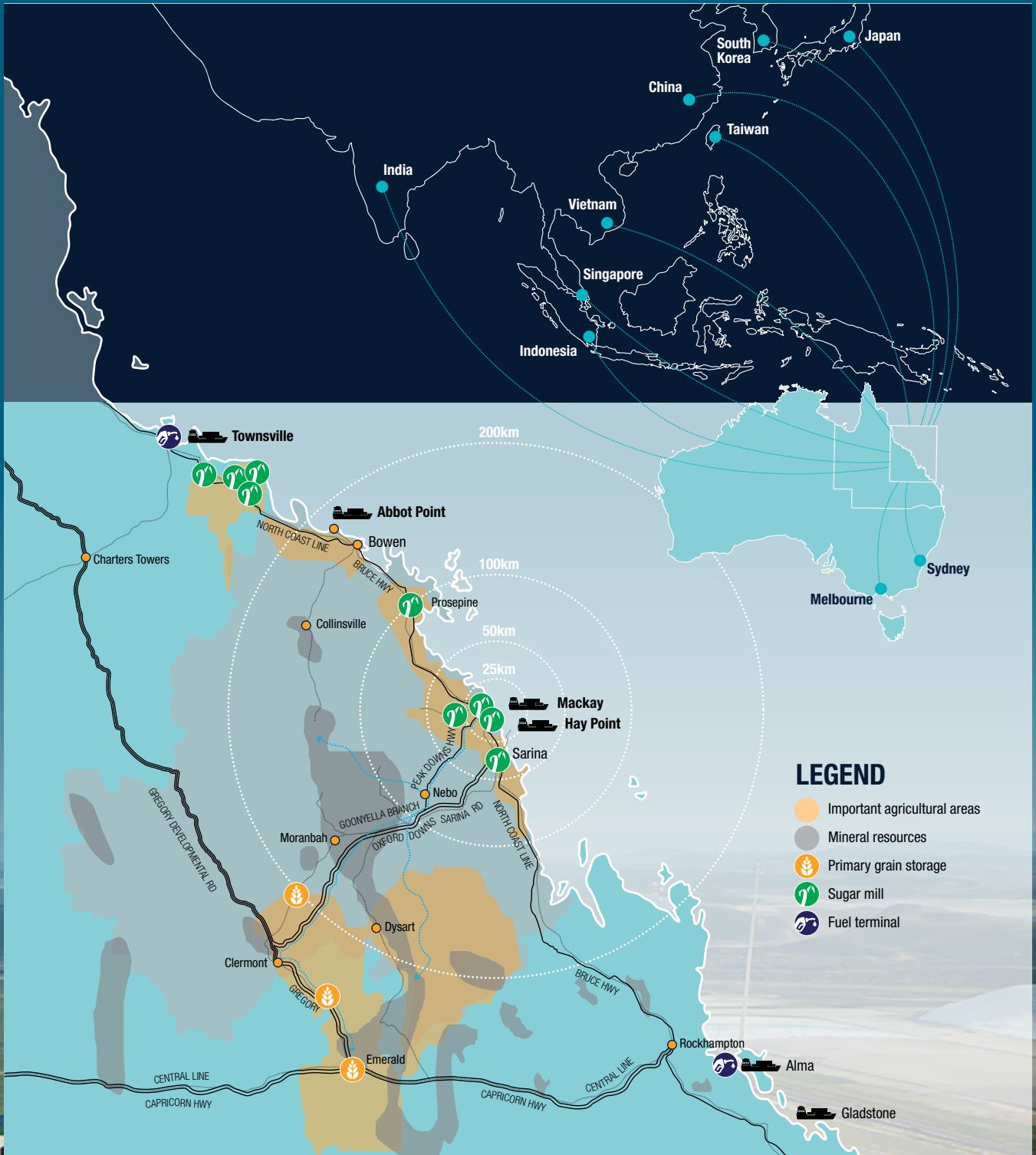
TIMELINE



NQBP issued a Request for Tender for construction to the market in September 2025 and awarded the tender to Ward Civil & Environmental Engineering in December 2025. With construction starting in January 2026, the Depot is planned to be completed, including commissioning, by mid-late 2026.

Following construction, a one-month commissioning period will be implemented to ensure that the facility, systems, and operations are fully integrated and ready for commercial launch. This phase will include yard testing, reefer commissioning, safety sign-off, and onboarding of operators. The depot will be operational on day one, facilitating container flows through the Port of Mackay for the first time.

This timeline marks a transformative moment for the region. In a year, our ambition is to transition from concept to reality, with a modern container depot that drives trade diversification, supports exporters and importers, and creates new pathways for containerised cargo in northern Queensland. For the industry, this means immediate access to infrastructure that has the potential to reshape logistics flows and foster a more competitive and resilient supply chain for the Mackay region and beyond.





NQBP is open for business and investing in infrastructure to enhance regional supply chain resilience, trade diversification and enable scalable growth in containerised trade at the Port of Mackay.



Watch now to see how we're
shaping the future of the Port of Mackay.

CONTACT OUR COMMERCIAL TEAM

Darren Fursman

✉ DFursman@nqbp.com.au

☎ +617 3011 7927

☎ +61 498 881 788

Liam Cullin

✉ LCullin@nqbp.com.au

☎ +617 3011 7922

☎ +61 404 404 661

communications@nqbp.com.au | nqbp.com.au

