

# Port of Hay Point

## Ambient Air, Noise and Weather Monitoring

Validated Report

1<sup>st</sup> July – 31<sup>st</sup> July 2024

Report No.: DAT21605

Report issue date: 29<sup>th</sup> August 2024

Maintenance contract: MC2099

*ACOEM AUSTRALASIA (ECOTECH PTY LTD.) ABN: 32005752081*

*1492 Ferntree Gully Rd, Knoxfield VIC. 3180. AUSTRALIA*

*Tel No: 1300 364 946 Fax No: 1300 668 763*

*Email [info.au@acoem.com](mailto:info.au@acoem.com) WEB [www.acoem.com.au](http://www.acoem.com.au)*

# Residential and Control Monitoring Stations

Report No: DAT21605

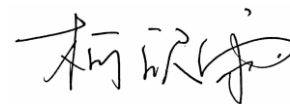
Port of Hay Point

Customer Details	
Customer	Dalrymple Bay Coal Terminal (DBCT) Pty Ltd
Contact name	Environmental Services Team
Address	Martin Armstrong Drive, Hay Point, QLD 4740
Email	EnvironmentalServicesTeam@dbct.com.au
Phone	(07) 4943 8444

Revision History			
Revision	Report ID	Date	Analyst
0	DAT21605	29/08/2024	Xinyu Ke

Report by:

Xinyu Ke



Approved Signatory:

Elmira Parto



---

# Residential and Control Monitoring Stations

Report No: DAT21605

## Port of Hay Point

---

### Table of Contents

Customer Details .....	2
Revision History .....	2
Table of Contents .....	3
List of Figures.....	4
List of Tables.....	5
1.0 Introduction.....	6
1.1. Purpose of monitoring .....	6
2.0 Monitoring and Data Collection .....	7
2.1. Siting Details.....	7
2.2. Monitored Parameters.....	10
2.3. Data Collection Methods.....	12
2.3.1. Data Acquisition .....	13
2.3.2. Sampling and analysis for Rain .....	13
2.3.3. Sampling and analysis for Noise.....	13
2.3.4. Sampling and analysis for Deposited Dust .....	13
2.4. Data Validation and Reporting .....	14
2.4.1. Validation .....	14
2.4.2. Reporting.....	14
3.0 Air Quality Objectives.....	16
4.0 Results .....	17
4.1. Data Capture .....	17
4.2. Complaints.....	18

---

# Residential and Control Monitoring Stations

## Report No: DAT21605

### Port of Hay Point

---

4.3. Air Quality Summary .....	18
4.3.1. Air Quality Categories.....	18
4.4. Graphic Representations.....	20
Appendix 1 - Definitions & Abbreviations .....	36

#### List of Figures

Figure 1: Port of Hay Point Residential, Rain Gauge and Control Monitoring Stations Location .....	8
Figure 2: Detail of the Port of Hay Point Residential Stations Location and Rain Gauge.....	9
Figure 3: Hourly PM <sub>10</sub> Averages for the Port of Hay Point Assessed Against the Air Quality Index .....	19
Figure 4: Port of Hay Point PM <sub>10</sub> 24-Hour Average Data Compared to the Licence Limit for July 2024.....	20
Figure 5: Dust Deposition Results for Northern Sites, July 2024 .....	22
Figure 6: Dust Deposition Results for Southern Sites, July 2024.....	23
Figure 7: Noise Levels Recorded at P1 for July 2024.....	25
Figure 8: Noise Levels Recorded at P2 for July 2024.....	26
Figure 9: Noise Levels Recorded at P3 for July 2024.....	27
Figure 10: Noise Levels Recorded at P4 for July 2024.....	28
Figure 11: P1 Wind Rose 5-Minute Data for July 2024 .....	29
Figure 12: P2 Wind Rose 5-Minute Data for July 2024 .....	30
Figure 13: P3 Wind Rose 5-Minute Data for July 2024 .....	31
Figure 14: P4 Wind Rose 5-Minute Data for July 2024 .....	32
Figure 15: Port of Hay Point AT 5-Minute Averages Data for July 2024 .....	33
Figure 16: Port of Hay Point RH 5-Minute Averages Data for July 2024.....	34
Figure 17: Port of Hay Point Rain Daily Totals for July 2024 .....	35

---

# Residential and Control Monitoring Stations

**Report No: DAT21605**

## **Port of Hay Point**

---

### List of Tables

Table 1: Port of Hay Point Residential and Control Monitoring Sites Locations.....	7
Table 2: Parameters measured at the Port of Hay Point Residential and Control Monitoring Stations.....	10
Table 3: Methods.....	12
Table 4: Port of Hay Point Air Quality Objectives.....	16
Table 5: P1-P4 Data Capture for July 2024.....	17
Table 6: Colour-coded Categories for Air Quality Categories .....	18
Table 7: Port of Hay Point Wind Direction and PM <sub>10</sub> 24h Average Data for July 2024 .....	21
Table 8: Noise Levels (L <sub>A90</sub> ) Measured at P1, P2, P3 and P4 for July 2024 .....	24

---

# Residential and Control Monitoring Stations

Report No: DAT21605

Port of Hay Point

---

## 1.0 Introduction

Acoem Australasia (Ecotech Pty Ltd) was commissioned by North Queensland Bulk Ports Corporation (NQBP), Dalrymple Bay Coal Terminal Pty Ltd (DBCT P/L) and BMA Hay Point Coal Terminal (HPCT) to provide monitoring and data reporting for the Port of Hay Point environmental monitoring program in Hay Point, Queensland. Acoem Australasia (Ecotech) commenced services under the ambient air quality monitoring program Contract SA294.2016 on the 1<sup>st</sup> of March 2017.

This report presents the data for July 2024.

The data presented in this report:

- Describes air quality measurements;
- Compares monitoring results;
- Has been quality assured.

### 1.1. Purpose of monitoring

This Ambient Air Monitoring Program has been established to proactively monitor ambient air, noise and meteorological conditions in the community surrounding the Port of Hay Point. The program consists of two control stations (C1 and C2), nine ambient air quality monitoring stations (P1, P2, P3, P4, S1, S2, S3, S5 and S6) and one rain gauge as described in Table 1.

Since the commencement of this monitoring program in 1993, Louisa Creek township has been identified as future strategic port land. NQBP have introduced a voluntary residential buy back scheme and taken steps to prevent residential re-intensification in zones immediately adjacent to the Port. Subsequently the monitoring station P2 is no longer in as populated residential location as when the program initially began.

# Residential and Control Monitoring Stations

Report No: DAT21605

## Port of Hay Point

### 2.0 Monitoring and Data Collection

#### 2.1. Siting Details

The Sites consist of two Control stations (C1 and C2), nine Residential ambient air quality monitoring stations (P1, P2, P3, P4, S1, S2, S3, S5 and S6) and one Rain Gauge. The stations' location and siting details are described in the following table and figures.

**Table 1: Port of Hay Point Residential and Control Monitoring Sites Locations**

Site Name	Geographical Coordinates	Height Above Sea Level (m)
C1 - Grasstree Beach (South)	21°21'54.71"S, 149°18'25.60"E	8
C2 - Grasstree Beach (North)	21°22'3.06"S, 149°18'27.19"E	10
P1 - Louisa Creek, Edmund Avenue (North)	21°16'21.43"S, 149°15'47.96"E	6
P2 - Louisa Creek, Edmund Avenue (South)	21°16'48.46"S, 149°16'34.64"E	10
P3 - Half Tide Car Park	21°17'45.34"S, 149°17'21.76"E	9
P4 - Salonika Beach	21°18'29.32"S, 149°17'33.64"E	12
S1 - Louisa Creek (North)	21°16'35.88"S, 149°16'14.42"E	1
S2 - Louisa Creek (South)	21°16'46.88"S, 149°16'29.00"E	4
S3 – Osborne's Residence	21°17'23.20"S, 149°16'10.05"E	15
S5 - Salonika Beach	21°18'11.60"S, 149°17'35.24"E	13
S6 - Half Tide Beach	21°17'56.83"S, 149°17'31.84"E	9
Rain Gauge	21°17'23.52"S, 149°17'17.41"E	7

---

# Residential and Control Monitoring Stations

Report No: DAT21605

Port of Hay Point

---



Figure 1: Port of Hay Point Residential, Rain Gauge and Control Monitoring Stations Location



---

# Residential and Control Monitoring Stations

Report No: DAT21605

Port of Hay Point

---



Figure 2: Detail of the Port of Hay Point Residential Stations Location and Rain Gauge

# Residential and Control Monitoring Stations

Report No: DAT21605

## Port of Hay Point

### 2.2. Monitored Parameters

Table 2 details the parameters monitored and the instruments used at Port of Hay Point Residential and Control monitoring stations. Appendix 1 defines any abbreviated parameter names used throughout the report.

Sampling of all parameters is continuous, with the exception of Deposited dust. Deposited dust is captured over a one-month period and the sample bottles collected once a month.

For meteorological sensors, the elevation given in the table below is the height above ground level at the monitoring station.

**Table 2: Parameters measured at the Port of Hay Point Residential and Control Monitoring Stations**

Site Code	Parameter Measured	Instrument and Measurement Technique
C1, C2, S1, S2, S3, S5 and S6	Deposited Particulate Matter	Dust Deposition Gauge
P3	Deposited Particulate Matter	Dust Deposition Gauge
	PM <sub>10</sub>	Thermo – TEOM 1405 (Tapered Element Oscillating Microbalance)
	Wind Speed (Horizontal, elevation 10m)	Vaisala WXT520 Multi-sensor Weather Monitor
	Wind Direction (Elevation 10m)	Vaisala WXT520 Multi-sensor Weather Monitor
	Ambient Temperature (Elevation 10m)	Vaisala WXT520 Multi-sensor Weather Monitor
	Relative Humidity (Elevation 10m)	Vaisala WXT520 Multi-sensor Weather Monitor
	Noise	Class 1 Brüel & Kjær 2250 Sound Level Meter
P1, P2 and P4	Deposited Particulate Matter	Dust Deposition Gauge

# Residential and Control Monitoring Stations

Report No: DAT21605

## Port of Hay Point

Site Code	Parameter Measured	Instrument and Measurement Technique
	PM <sub>10</sub>	Thermo – TEOM 1405 (Tapered Element Oscillating Microbalance)
	Wind Speed (horizontal, elevation 10m)	Gill Windsonic Op1
	Wind Direction (elevation 10m)	Gill Windsonic Op1
	Noise	Class 1 Brüel & Kjær 2250 Sound Level Meter
Rain Gauge	Rainfall	Hydrological Services tipping bucket rain gauge - Model TB3

Since the beginning of the project in March 2017 until the 9<sup>th</sup> of July 2018, the TEOMs at sites P1, P2, P3 and P4 were configured to measure TSP. After this date, measurements were changed to PM<sub>10</sub> due to updates to the Dalrymple Bay Coal Terminal Pty Ltd and Hay Point Environmental Authority Permit<sup>1</sup>.

<sup>1</sup> Department of Environment and Heritage Protection Environmental Authority Permits EPPR00474413 and EPPR00504513.

# Residential and Control Monitoring Stations

Report No: DAT21605

## Port of Hay Point

### 2.3. Data Collection Methods

Table 3 below shows the methods used for data collection.

**Table 3: Methods**

Parameter Measured	Data Collection Methods Used	Description of Method
Deposited Particulate Matter ( <i>Sampling by Acoem Australasia (Ecotech)</i> )	AS/NZS 3580.10.1 2016	Methods for sampling and analysis of ambient air. Method 10.1: Determination of particulate matter—Deposited matter—Gravimetric method
Deposited Particulate Matter ( <i>Analysis by SGS</i> )	AN502 (Sydney) /AN503	The mass deposition rate of deposited matter is calculated from the mass of solids obtained, the funnel cross-section area and the exposure period.
PM <sub>10</sub> (TEOM)	AS/NZ 3580.9.8-2022	Methods for sampling and analysis of ambient air. Method 9.8: Determination of suspended particulate matter - PM <sub>10</sub> continuous direct mass method using a tapered element oscillating microbalance analyser.
Vector Wind Speed (Horizontal)	AS/NZS 3580.14 2014	Methods for sampling and analysis of ambient air. Method 14: Meteorological monitoring for ambient air quality monitoring applications
Vector Wind Direction	AS/NZS 3580.14 2014	Methods for sampling and analysis of ambient air. Method 14: Meteorological monitoring for ambient air quality monitoring applications
Ambient Temperature	AS/NZS 3580.14 2014	Methods for sampling and analysis of ambient air. Method 14: Meteorological monitoring for ambient air quality monitoring applications
Relative Humidity	AS/NZS 3580.14 2014	Methods for sampling and analysis of ambient air. Method 14: Meteorological monitoring for ambient air quality monitoring applications
Rain ( <i>Sampling by external contractor</i> )	AS/NZS 3580.14 2014	Methods for sampling and analysis of ambient air. Method 14: Meteorological monitoring for ambient air quality monitoring applications. Rainfall by tipping bucket rain gauge
Noise (L <sub>eq</sub> , L <sub>10</sub> and L <sub>90</sub> ) ( <i>Analysis by Marshall Day Acoustics</i> )	DEHP Noise Measurement Manual (2013) and AS 1055.1: 1997	Acoustics - Description and measurement of environmental noise - Part 1: General procedures

---

# Residential and Control Monitoring Stations

**Report No: DAT21605**

**Port of Hay Point**

---

## **2.3.1. Data Acquisition**

Data acquisition for continuously monitored parameters, with the exception of noise and rain, is performed using an Envista logger situated at each of the monitoring sites. Each logger is equipped with a 4G modem for remote data collection. The recorded data is remotely collected and transferred via FTP at 10-minute intervals (using Airodis™ version 5.2) and stored at Acoem Australasia (Ecotech) Environmental Reporting Services (ERS) department in Melbourne, Australia. Data samples are logged in 5-minute intervals. Unless otherwise specified, raw data will be retained for at least four years.

## **2.3.2. Sampling and analysis for Rain**

Rain sampling and analysis are conducted by an external contractor. The 5-minute data is sent monthly to Acoem Australasia (Ecotech) by Dalrymple Bay Coal Terminal Pty Ltd (DBCT P/L).

## **2.3.3. Sampling and analysis for Noise**

Noise data samples are logged in 5-minute intervals. The data is downloaded monthly by Acoem Australasia (Ecotech) field service technicians and sent to Marshall Day Acoustics for analysis.

## **2.3.4. Sampling and analysis for Deposited Dust**

Deposited dust sampling is conducted by Acoem Australasia (Ecotech) field service technicians. Sample bottles are sent to SGS Cairns Environmental Laboratory for analysis. The laboratory is NATA accredited for compliance with ISO/IEC 17025:2005 (Acc. No. 2562, Site No.3146).

---

# Residential and Control Monitoring Stations

**Report No: DAT21605**

**Port of Hay Point**

---

## 2.4. Data Validation and Reporting

### 2.4.1. Validation

The Acoem Australasia (Ecotech) ERS department perform daily data checks on continuously monitored parameters (with the exception of noise and rainfall data) to ensure maximum data capture rates are maintained. Any equipment failures are communicated to the responsible field engineers for urgent rectification. Acoem Australasia (Ecotech) ERS maintains two distinct databases containing non-validated and validated data respectively.

The validated database is created by duplicating the non-validated database and then flagging data affected by instrument faults, calibrations and other maintenance activities. The data validation software requires the analyst to supply a valid reason (e.g., backed by maintenance notes, calibration sheets etc.) in the database for flagging any data as invalid.

Details of all invalid or missing data are recorded in the Valid Data Exception Tables.

Validation is performed by the analyst, and the validation is reviewed. Graphs and tables are generated based on the validated five-minute data.

Note: Validation for noise data is performed by the subcontractor Marshall Day Acoustics.

### 2.4.2. Reporting

The data contained in this report is based on Australian Eastern Standard Time.

All averages are calculated from the five-minute data. Averages are based on a minimum of 75% valid readings within the averaging period. Where data capture is low for a particular parameter, summary values (e.g., monthly maximum and minimum) may be based on less than 75% valid samples.

The reader should use caution when interpreting these values as they may not be representative of conditions for the entire sample period.

Averaging periods of eight hours or less are reported for the end of the period, i.e., the hourly average 02:00am is for the data collected from 1:00am to 2:00am. One-hour averages are calculated based on a clock hour. One day averages are calculated based on calendar days.

#### **Rain Reporting**

Rain results are provided to Acoem Australasia (Ecotech) by Dalrymple Bay Coal Terminal Pty Ltd (DBCT P/L) and included in this report.

---

# Residential and Control Monitoring Stations

**Report No: DAT21605**

## **Port of Hay Point**

---

### **Deposited Dust Reporting**

Deposited dust results are provided to Acoem Australasia (Ecotech) by the SGS Cairns Environmental Laboratory and summarised within this report.

### **Noise Data Reporting**

Noise levels results are provided to Acoem Australasia (Ecotech) by Marshall Day Acoustics and summarised within this report.

### **Wind Data Reporting**

Wind speed and wind direction data associated with calm wind conditions are reported in accordance with the requirements of *AS/NZS 3580.14-2014*. Calm wind conditions are defined as wind speeds below the starting threshold of the wind speed/direction sensors.

In Table 7 on page 21, “South” describes the wind direction arc between the compass points of >60 degrees and <240 degrees. “North” describes wind direction arc between the compass points of >240 degrees and more <60 degrees.

# Residential and Control Monitoring Stations

Report No: DAT21605

## Port of Hay Point

### 3.0 Air Quality Objectives

The air quality objectives monitored at the Port of Hay Point monitoring network sites are taken from the Dalrymple Bay Coal Terminal Pty Ltd and Hay Point Environmental Authority Permit<sup>2</sup>.

The air quality objectives are shown in Table 4 below.

**Table 4: Port of Hay Point Air Quality Objectives**

Parameter	Time Period	Licence Limit	Units
Deposited Dust – Total Insoluble Solids	1 day: based on 1 month sampling	120 mg/m <sup>2</sup> /day	mg/m <sup>2</sup> /day
PM <sub>10</sub>	1 day	50 µg/m <sup>3</sup> – when generated by port activities and measured at any sensitive or commercial place	µg/m <sup>3</sup>
L <sub>A90</sub>	15 min	Day level (7am – 7pm) = 55 dB(A) Night level (7pm – 7am) = 53 dB(A)	dB(A)

<sup>2</sup> Department of Environment and Heritage Protection Environmental Authority Permits EPPR00474413 and EPPR00504513.



# Residential and Control Monitoring Stations

Report No: DAT21605

## Port of Hay Point

### 4.0 Results

#### 4.1. Data Capture

Data capture is based on 5-minute data and refers to the amount of available data collected during the report period. The percentage of data captured is calculated using the following equation:

$$\text{Data capture} = (\text{Reported air quality data} / \text{Total data}) \times 100\%$$

Where:

- Reported air quality data = Number of instrument readings which have been validated through a quality assured process and excludes all data errors, zero data collection due to calibration, failures and planned and unplanned maintenance.
- Total data = Total number of instrument readings since the start of the term assuming no maintenance, errors, loss of data or calibration.

Table 5 displays data capture statistics for the reporting period (July 2024). **Bold** values in the table indicate data capture below 90%.

**Table 5: P1-P4 Data Capture for July 2024**

Parameter	Data Capture (%)			
	P1	P2	P3	P4
PM <sub>10</sub>	90.5	99.6	99.7	99.7
WS and WD	90.8	100.0	100.0	93.2
AT <sup>3</sup>			100.0	
RH			100.0	
Noise	98.0	100.0	100.0	<b>48.0</b>

The data capture for most of the parameters at all sites was above 90% for the reporting month. The data capture for noise at site P4 was below 90% due to a configuration from a previous rental project causing a glitch with a licence. This issue was resolved during a monthly maintenance visit on 2<sup>nd</sup>

<sup>3</sup> AT and RH parameters are only measured at P3 station.

# Residential and Control Monitoring Stations

Report No: DAT21605

## Port of Hay Point

August 2024. The overall monthly percentage of data captured for the 11 Dust Deposition Gauges was 100.0%.

### 4.2. Complaints

There were no external contacts regarding noise and dust received by the PoHP terminals during July 2024.

### 4.3. Air Quality Summary

#### 4.3.1. Air Quality Categories

Air quality categories rather than an air quality index have been adopted to align with a Nationally consistent method of reporting of air quality data.

Each air quality measurement from a monitoring station is assigned an air quality category rating based on comparison of the measurement value against the relevant air quality guideline. Five colour-coded air quality categories are used, being 'Good' (green), 'Fair' (yellow), 'Poor' (orange), 'Very Poor' (red) or 'Extremely Poor' (dark red). Values greater than the air quality guideline will be appear as 'Poor', 'Very Poor' or 'Extremely Poor'.<sup>4</sup>

The Air Quality Categories rating is based on 1-hour average values.

**Table 6: Colour-coded Categories for Air Quality Categories**

Not available	Good <50	Fair 50.1 - 100	Poor 100.1 - 200	Very Poor 200.1 - 600	Extremely Poor >600
---------------	-------------	--------------------	---------------------	--------------------------	------------------------

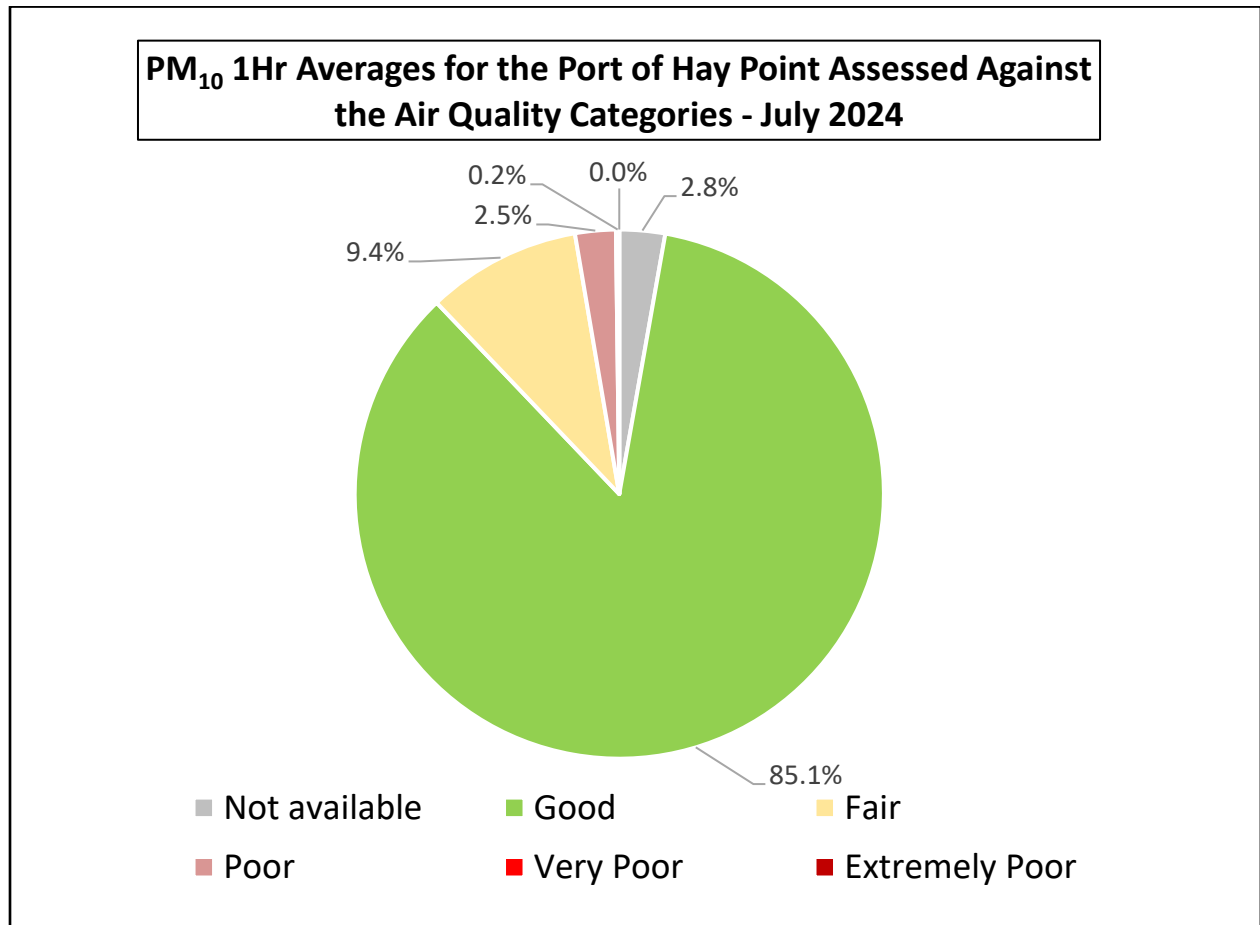
The PM<sub>10</sub> 1-hour average values for the reporting month in the stations P1, P2, P3 and P4 were assessed against the air quality category rating, and the pie chart on the next page presents the percentage of the days for which a specific air quality category was identified.

<sup>4</sup> <https://www.qld.gov.au/environment/pollution/monitoring/air/air-monitoring/air-quality-categories>

# Residential and Control Monitoring Stations

Report No: DAT21605

Port of Hay Point



**Figure 3: Hourly PM<sub>10</sub> Averages for the Port of Hay Point Assessed Against the Air Quality Index**

The majority of the days during the reporting period (July 2024) against the Air Quality Index were classified as Good (85.1%) or Fair (9.4%).

# Residential and Control Monitoring Stations

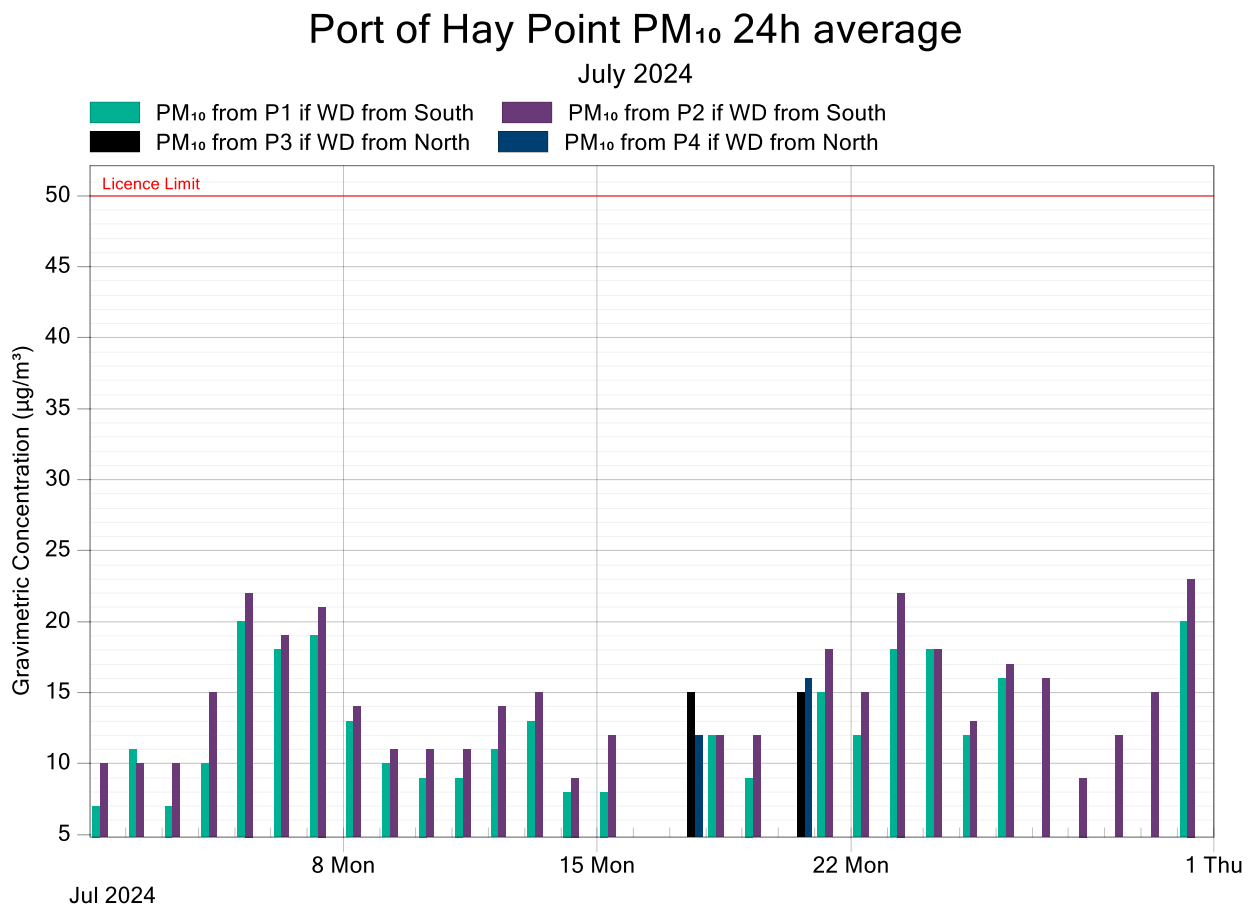
Report No: DAT21605

## Port of Hay Point

### 4.4. Graphic Representations

Validated 5-minute data for PM<sub>10</sub>, Wind speed, Wind direction, AT, RH, Rainfall and Noise were used to construct the following monthly graphic representations and summary tables.

For PM<sub>10</sub>, the licence limit is 50 µg/m<sup>3</sup> for the 24-hour average measured downwind of site. If the wind is from the South, sites P1 and P2 are downwind of site. If the wind is from the North, sites P3 and P4 are downwind of site. The following graph and table summarise the wind direction and PM<sub>10</sub> results for the month compared to the licence limit. Values highlighted in red in the table indicate a PM<sub>10</sub> exceedance. Values shaded in dark grey indicate wind direction from the North.



**Figure 4: Port of Hay Point PM<sub>10</sub> 24-Hour Average Data Compared to the Licence Limit for July 2024**

# Residential and Control Monitoring Stations

Report No: DAT21605

Port of Hay Point

Table 7: Port of Hay Point Wind Direction and PM<sub>10</sub> 24h Average Data for July 2024

Date	PM <sub>10</sub> exceedence limit (µg/m <sup>3</sup> )	Wind direction <sup>5</sup>	P1 PM <sub>10</sub> (µg/m <sup>3</sup> )	P2 PM <sub>10</sub> (µg/m <sup>3</sup> )	P3 PM <sub>10</sub> (µg/m <sup>3</sup> )	P4 PM <sub>10</sub> (µg/m <sup>3</sup> )
1/07/2024	50.0	South	7	10	5	6
2/07/2024	50.0	South	11	10	8	11
3/07/2024	50.0	South	7	10	5	14
4/07/2024	50.0	South	10	15	10	20
5/07/2024	50.0	South	20	22	21	46
6/07/2024	50.0	South	18	19	19	40
7/07/2024	50.0	South	19	21	20	41
8/07/2024	50.0	South	13	14	12	21
9/07/2024	50.0	South	10	11	7	14
10/07/2024	50.0	South	9	11	6	13
11/07/2024	50.0	South	9	11	7	13
12/07/2024	50.0	South	11	14	11	13
13/07/2024	50.0	South	13	15	11	17
14/07/2024	50.0	South	8	9	16	34
15/07/2024	50.0	South	8	12	14	12
16/07/2024	50.0	North	22	12	14	14
17/07/2024	50.0	North	9	10	15	12
18/07/2024	50.0	South	12	12	18	15
19/07/2024	50.0	South	9	12	10	16
20/07/2024	50.0	North	13	12	15	16
21/07/2024	50.0	South	15	18	15	23
22/07/2024	50.0	South	12	15	11	19
23/07/2024	50.0	South	18	22	18	27
24/07/2024	50.0	South	18	18	16	33
25/07/2024	50.0	South	12	13	10	21
26/07/2024	50.0	South	16	17	15	30
27/07/2024	50.0	South	-	16	13	18
28/07/2024	-	South	-	9	7	11
29/07/2024	-	South	-	12	9	27
30/07/2024	50.0	South	-	15	12	38
31/07/2024	50.0	South	20	23	20	44

<sup>5</sup> Wind compass direction from "South" is >60 degrees and <240 degrees

# Residential and Control Monitoring Stations

Report No: DAT21605

## Port of Hay Point

The next graphs present the deposited dust results for the Total Insoluble Solids in comparison with the license limit for the reporting month<sup>6</sup>. The results are presented in two different graphs: one for the sites located to the North of the Terminal (S1, S2, S3, P1 and P2) and another for the sites located to the South of the Terminal (S5, S6, P3 and P4).

The Total Insoluble Solids are classified in 4 categories: organic matter (plant and animal material), fine dark particles (dark material), mineral fraction (light material) and other material such as plastics.

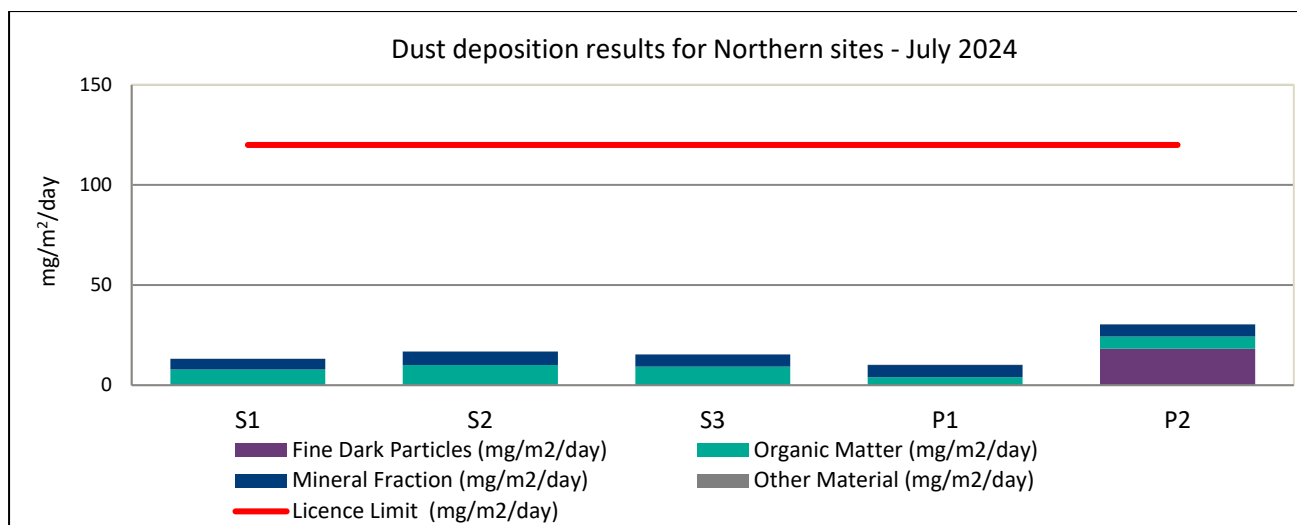


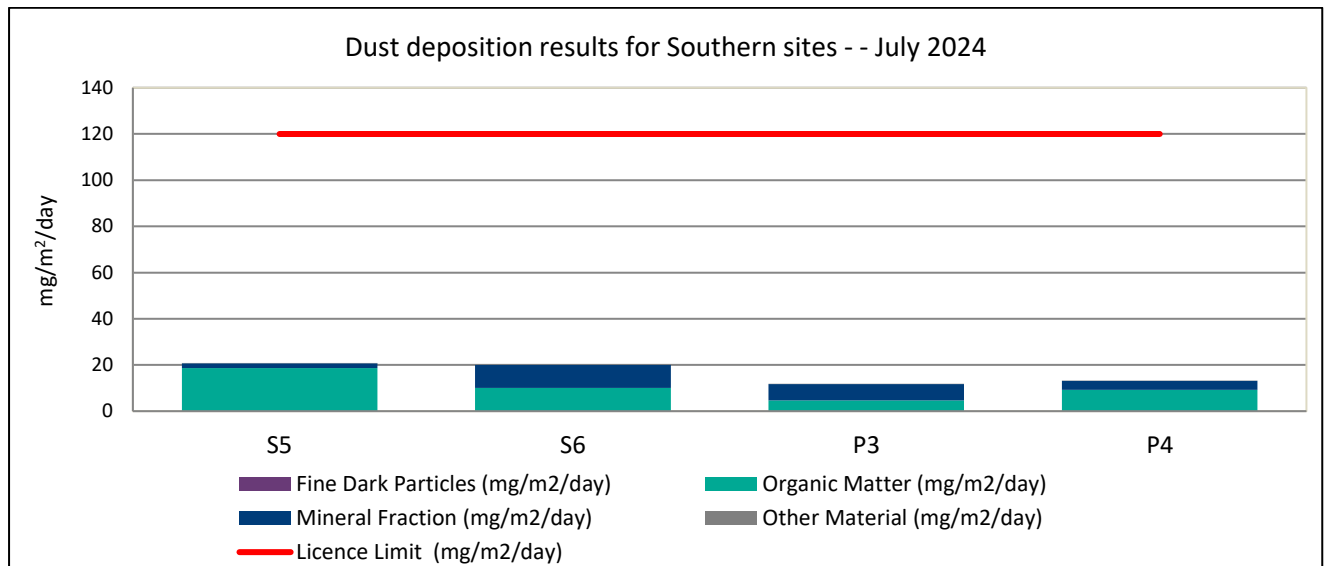
Figure 5: Dust Deposition Results for Northern Sites, July 2024

<sup>6</sup> Dust deposition results were provided to Acoem by the SGS Cairns Environmental Laboratory.

# Residential and Control Monitoring Stations

Report No: DAT21605

## Port of Hay Point



**Figure 6: Dust Deposition Results for Southern Sites, July 2024**

Total Insoluble Solids concentration for sites P1, P2, P3 and P4 was below the license limit. During July 2024, the prevailing wind direction was from the South (90.3% of the days).

# Residential and Control Monitoring Stations

Report No: DAT21605

## Port of Hay Point

Table 8 provides a summary of the average  $L_{A90}$  values recorded at sites P1, P2, P3 and P4 during the reporting month. Result summaries and interpretations below are those provided by Marshall Day Acoustics.

Noise level at Site P1 were observed to be shifted downwards for the period since 25/03/2024. Noise sensor has been replaced by a calibrated spare unit and was send back to manufacturer for test and calibration on 02/07/2024. Data from 01/07/2024 to 02/07/2024 was included for reference only.

**Table 8: Noise Levels ( $L_{A90}$ ) Measured at P1, P2, P3 and P4 for July 2024**

Location	$L_{A90}$ dB Average 12hr Level*	Standard deviation	Range
P1 Day	42	3.8	32 - 58
P1 Night	45	3.8	33 - 52
P2 Day	48	3.2	37 - 55
P2 Night	48	3.0	39 - 56
P3 Day	45	2.0	41 - 57
P3 Night	46	2.8	41 - 55
P4 Day	48	4.0	41 - 74
P4 Night	49	3.5	41 - 59

\*Average of  $L_{A90}$ , 15 min for the day and evening periods

**Note:** The recorded noise levels include extraneous noise and weather-related events, and are not pure component sound levels.

The average  $L_{A90}$  sound pressure levels at all monitoring locations (including adverse weather and other extraneous noise sources) were below the corresponding target noise levels for the Day and Night periods.

Sound levels measured throughout July 2024 at monitoring locations P1, P2, P3 and P4 have been plotted in Figures 7 to Figure 10 respectively.



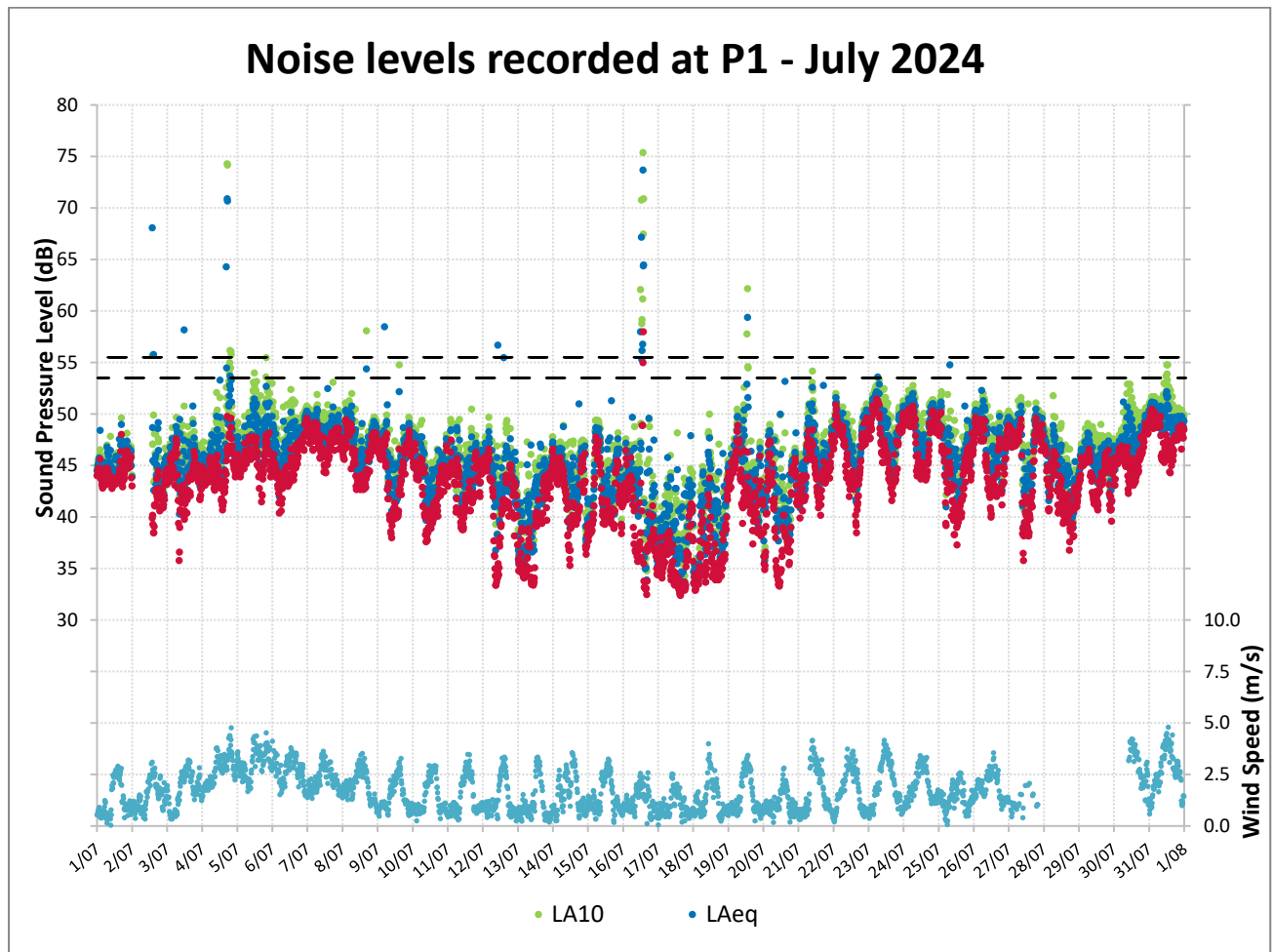


Figure 7: Noise Levels Recorded at P1 for July 2024<sup>7</sup>

<sup>7</sup> Noise level at Site P1 were observed to be shifted downwards for the period since 25/03/2024. Noise sensor has been replaced by a calibrated spare unit and was send back to manufacturer for test and calibration on 02/07/2024. Data from 01/07/2024 to 02/07/2024 was included for reference only.

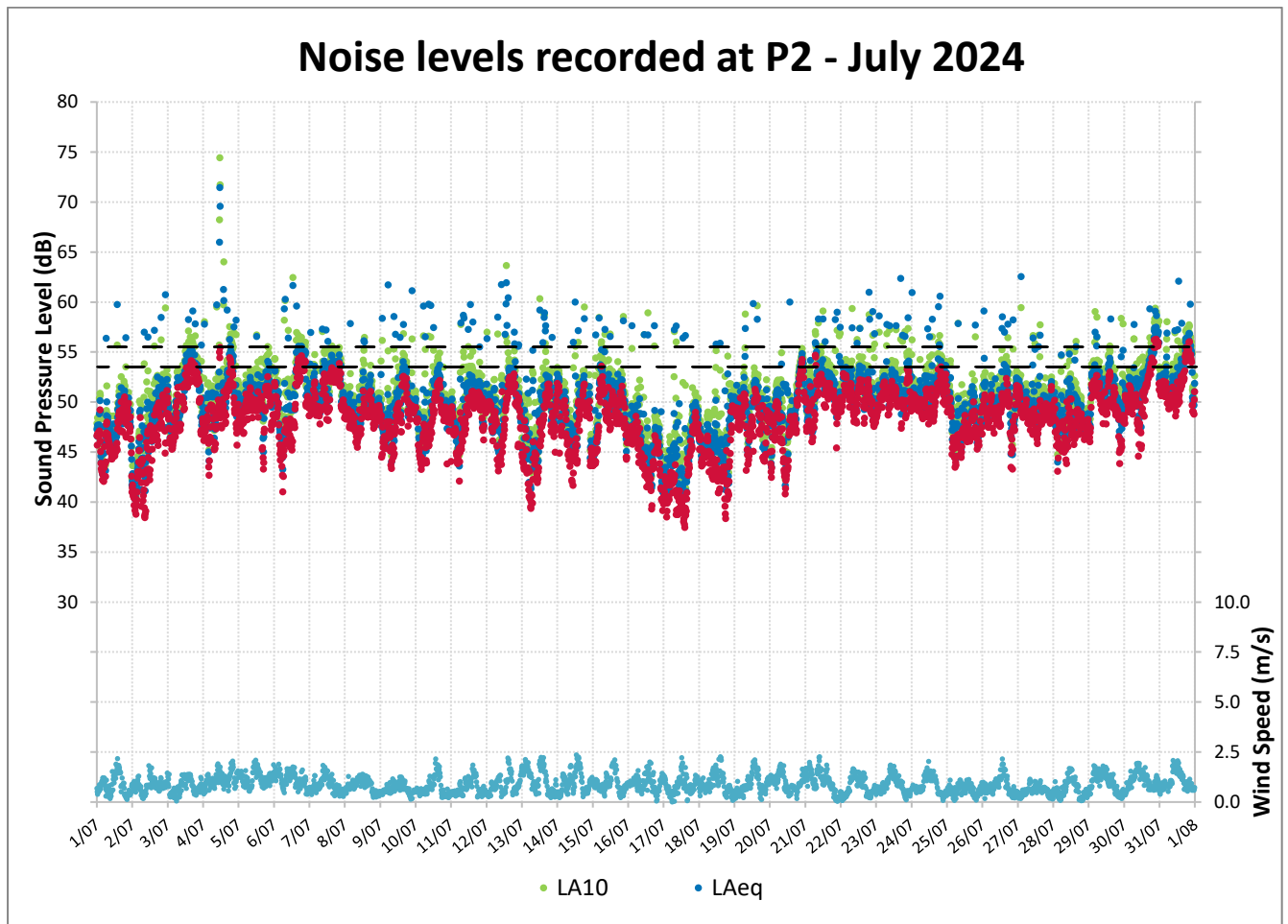


Figure 8: Noise Levels Recorded at P2 for July 2024

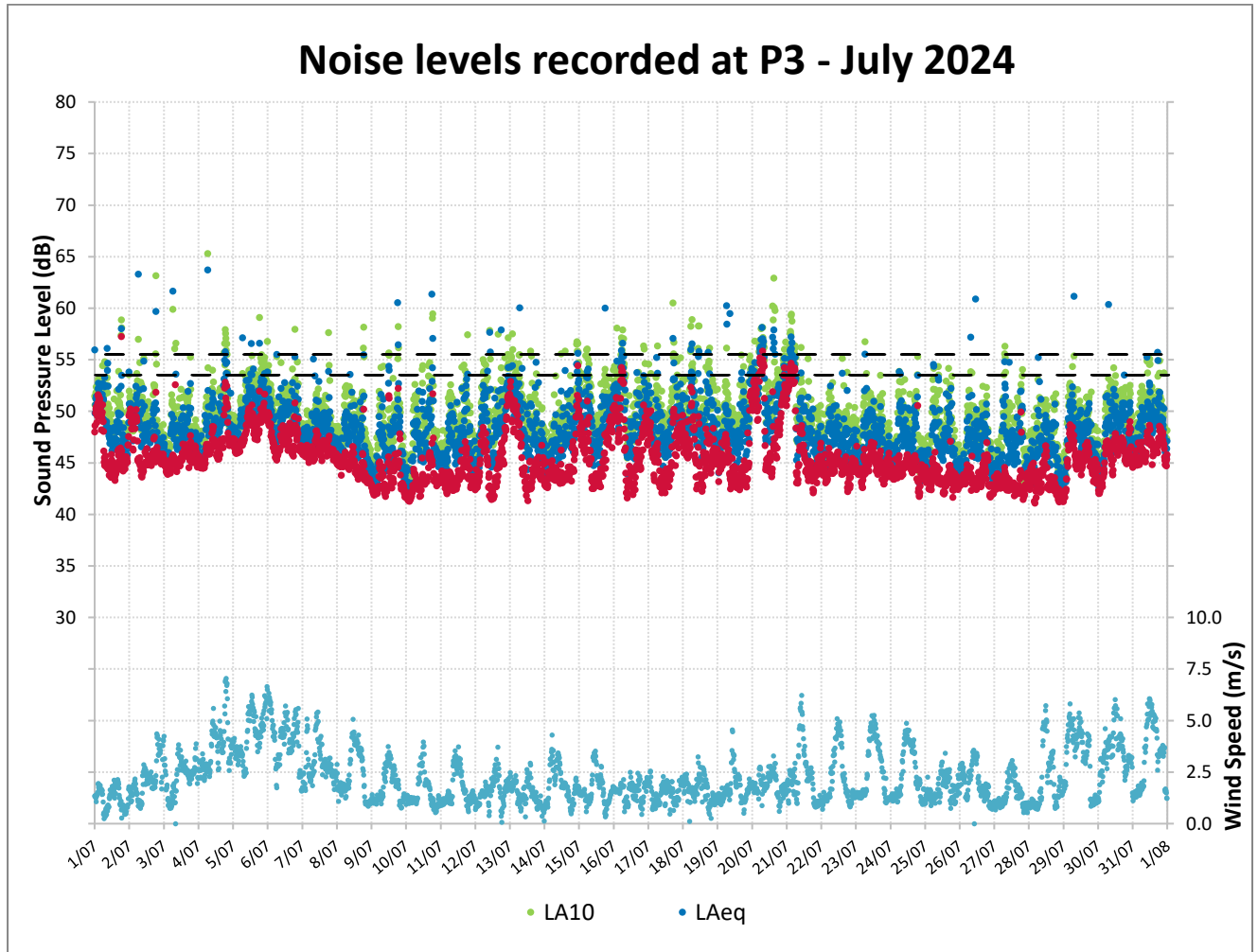


Figure 9: Noise Levels Recorded at P3 for July 2024

# Residential and Control Monitoring Stations

Report No: DAT21605

Port of Hay Point

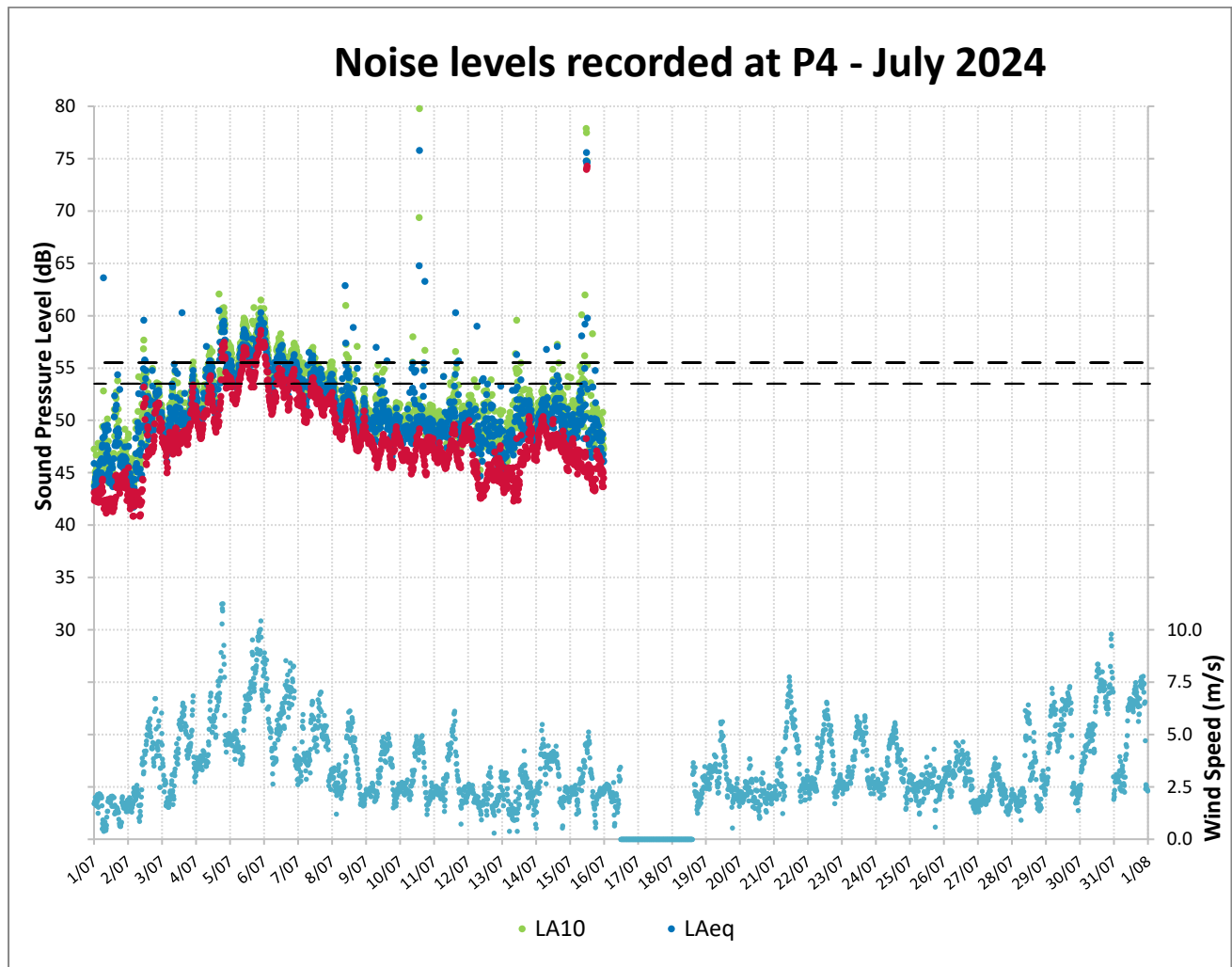


Figure 10: Noise Levels Recorded at P4 for July 2024<sup>8</sup>

<sup>8</sup> Noise data at Site P4 was not available from 15/07/2024 to 02/08/2024 due to a configuration from a previous rental unit causing a glitch with the license. The issue has been rectified during the maintenance visit on 02/08/2024.

# Residential and Control Monitoring Stations

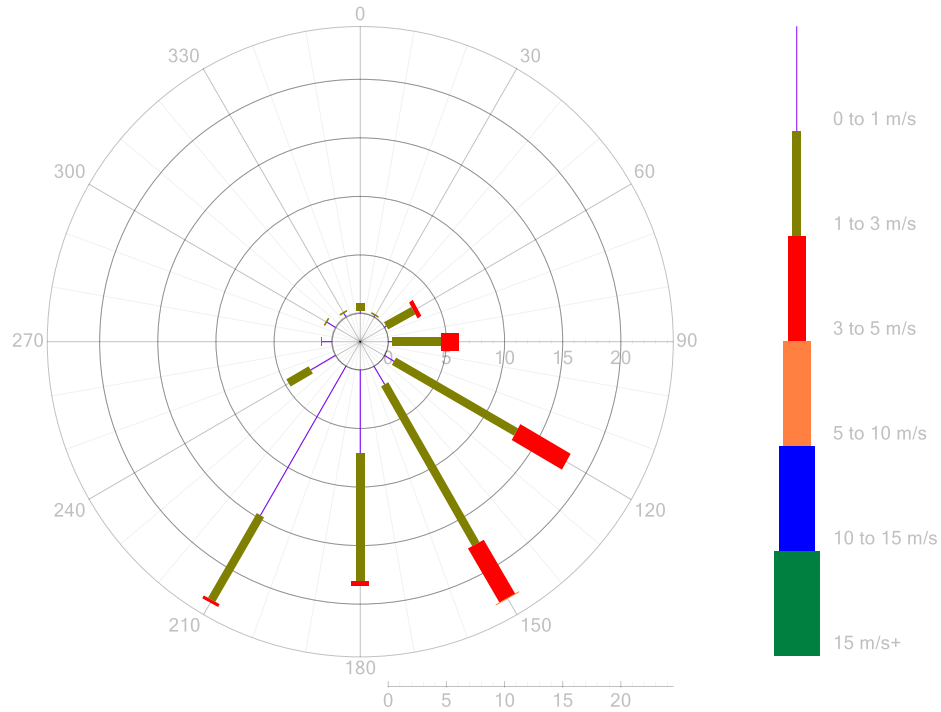
Report No: DAT21605

Port of Hay Point

## Wind Rose - P1 Louisa Creek Edmund Ave North

Wind Rose

July 2024



90.8% valid data present

Figure 11: P1 Wind Rose 5-Minute Data for July 2024

# Residential and Control Monitoring Stations

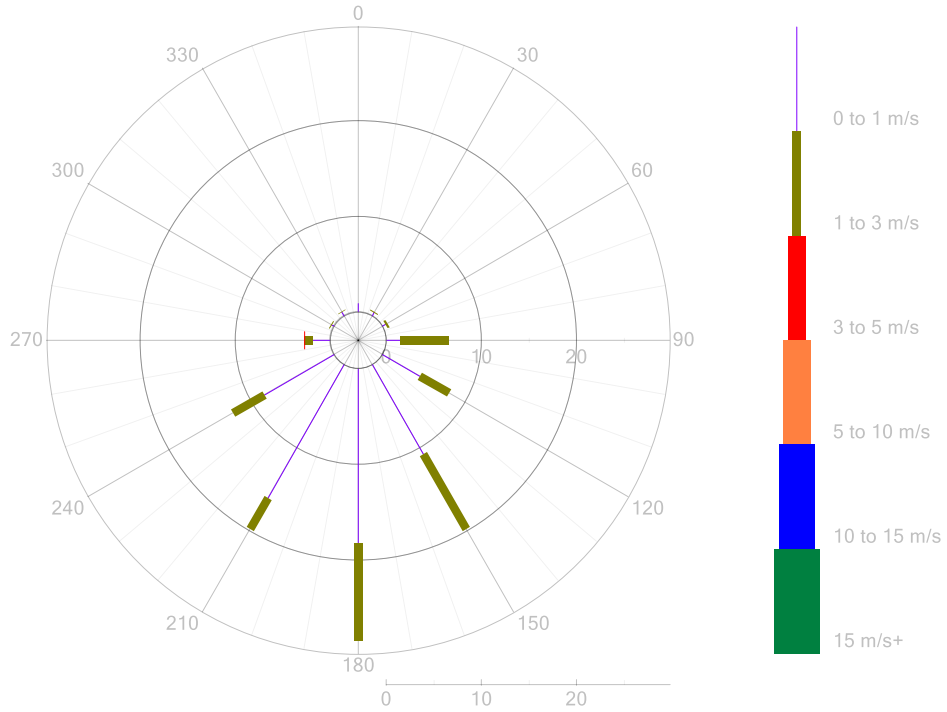
Report No: DAT21605

Port of Hay Point

## Wind Rose - P2 Louisa Creek Edmund Ave South

Wind Rose

July 2024



100.0% valid data present

Figure 12: P2 Wind Rose 5-Minute Data for July 2024

# Residential and Control Monitoring Stations

Report No: DAT21605

Port of Hay Point

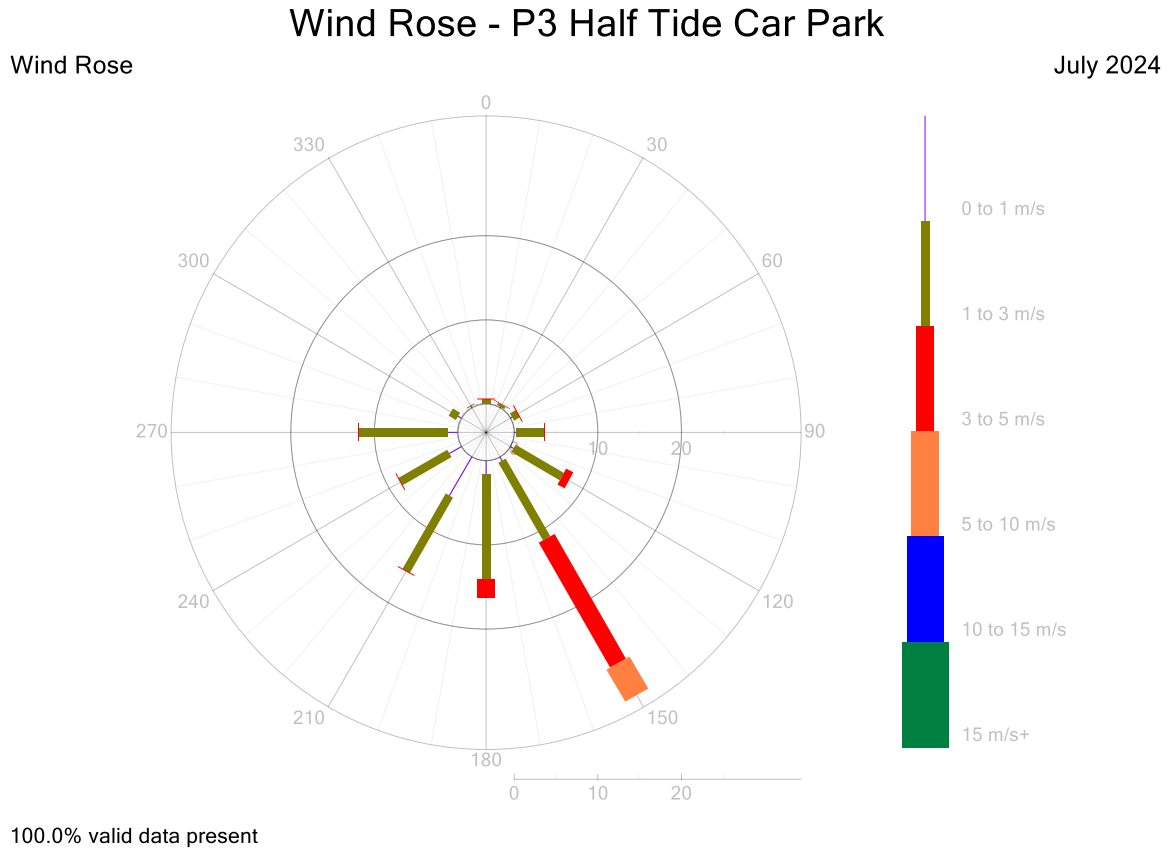


Figure 13: P3 Wind Rose 5-Minute Data for July 2024

# Residential and Control Monitoring Stations

Report No: DAT21605

Port of Hay Point

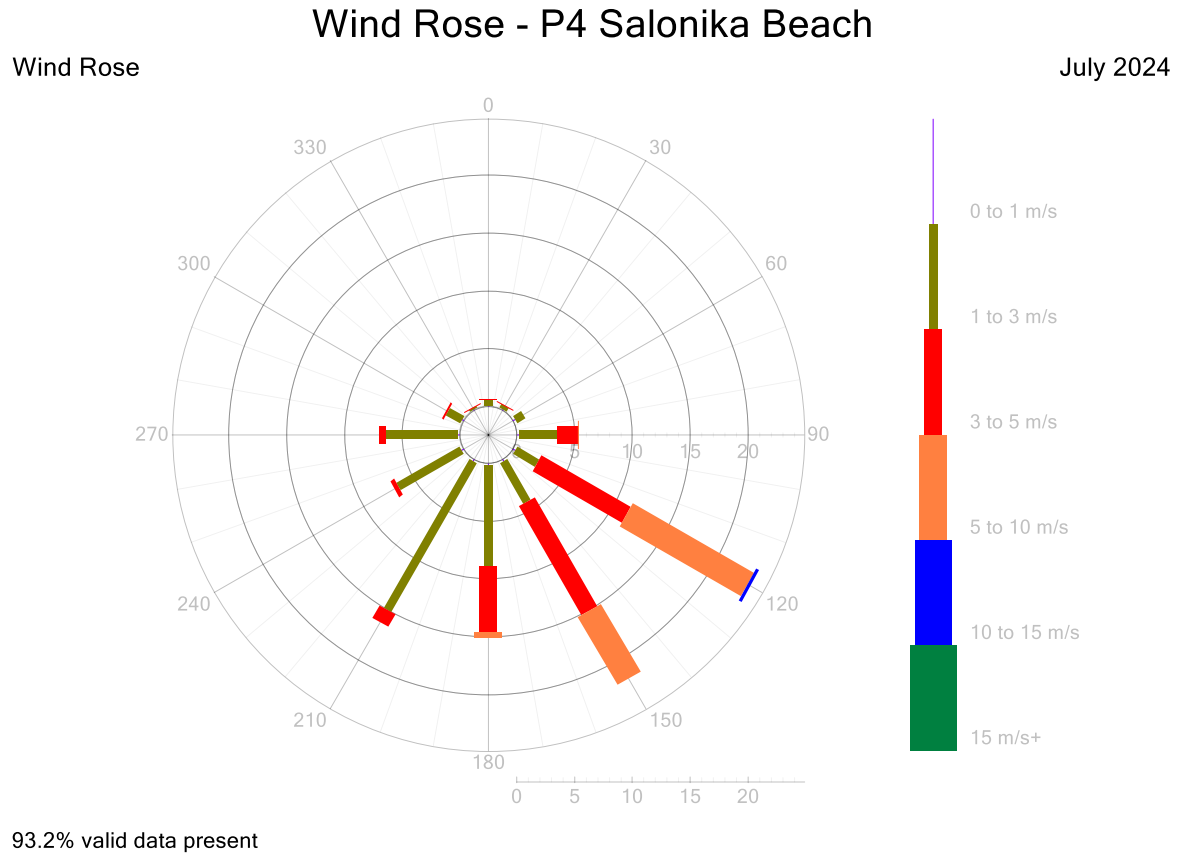


Figure 14: P4 Wind Rose 5-Minute Data for July 2024



---

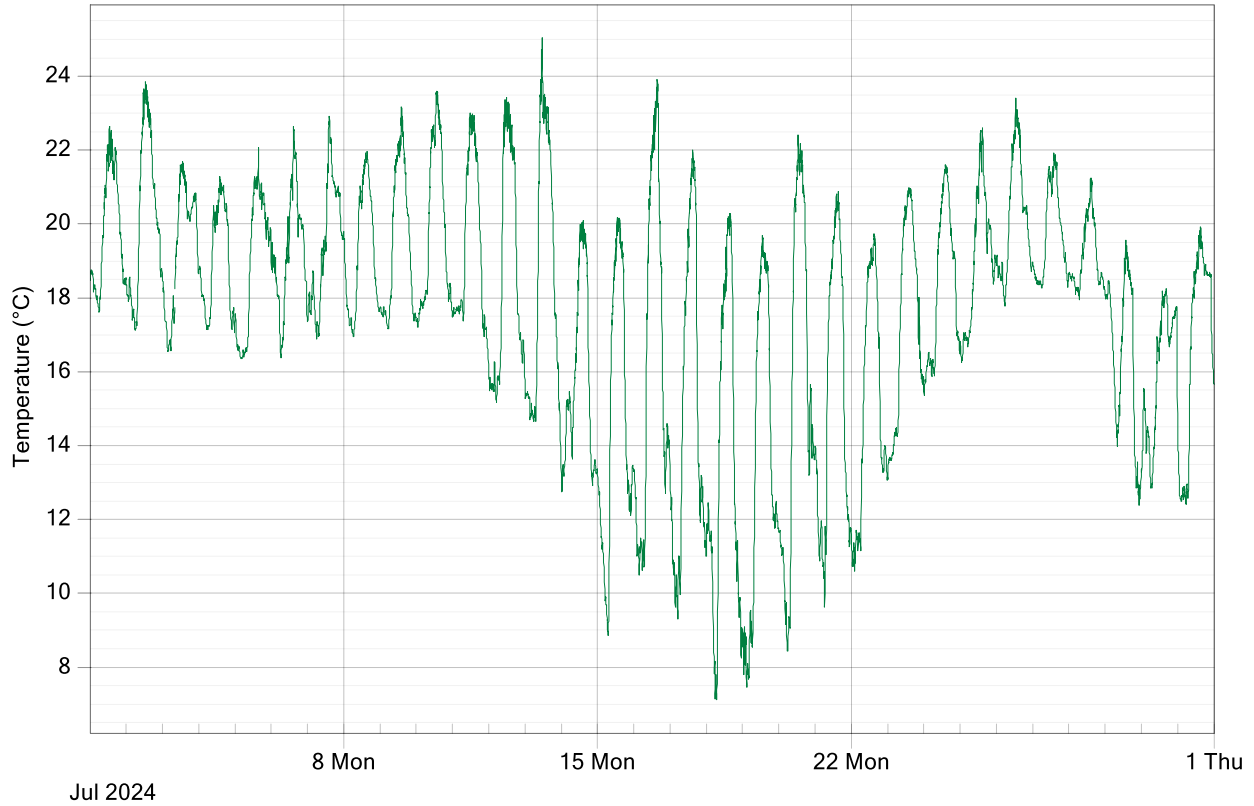
# Residential and Control Monitoring Stations

Report No: DAT21605

Port of Hay Point

---

Ambient Temperature 5-Minute Averages - P3 Half Tide Car Park  
July 2024



**Figure 15: Port of Hay Point AT 5-Minute Averages Data for July 2024**

---

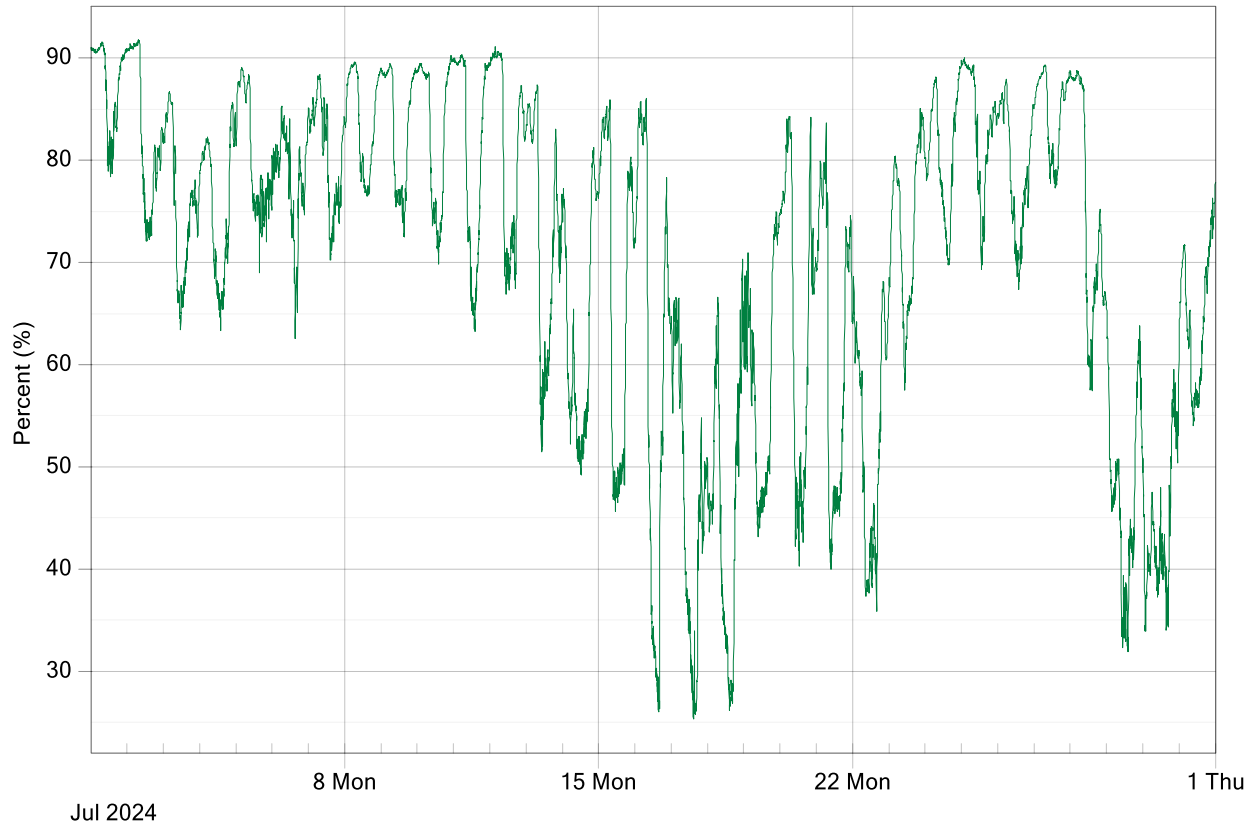
# Residential and Control Monitoring Stations

Report No: DAT21605

Port of Hay Point

---

Relative Humidity 5-Minute Averages - P3 Half Tide Car Park  
July 2024



**Figure 16: Port of Hay Point RH 5-Minute Averages Data for July 2024**

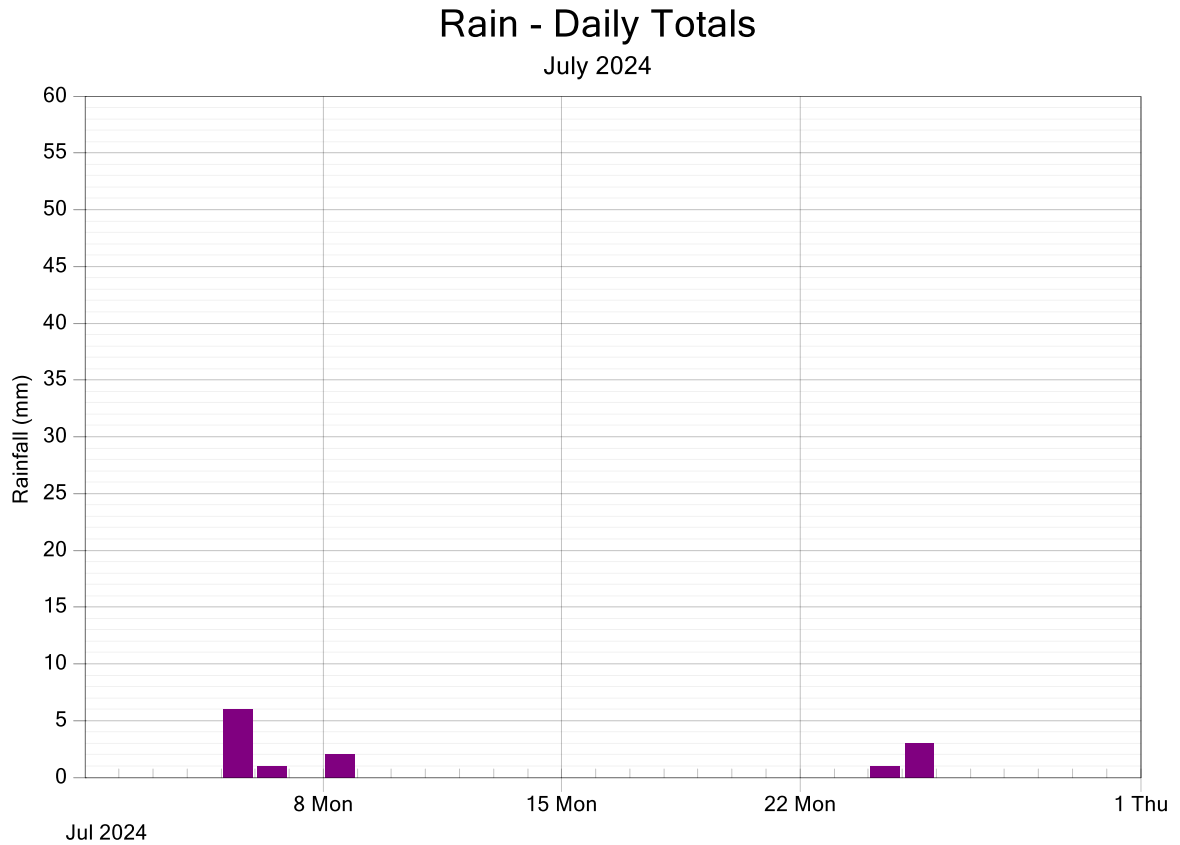
---

# Residential and Control Monitoring Stations

Report No: DAT21605

Port of Hay Point

---



**Figure 17: Port of Hay Point Rain Daily Totals for July 2024**

----- END OF REPORT -----

---

# Residential and Control Monitoring Stations

Report No: DAT21605

Port of Hay Point

---

## Appendix 1 - Definitions & Abbreviations

°C	Degrees Celsius
µg/m <sup>3</sup>	Micrograms per cubic meter at standard temperature and pressure (0°C and 101.3 kPa)
AT	Ambient Temperature
atm	Atmosphere
calm	Wind conditions where the wind speed is below the operating range of the wind sensor
dBa	A-weighted decibels
deg	Degrees (True North)
m/s	Meters per second
mg/m <sup>2</sup>	Milligrams per square meter
PM <sub>10</sub>	Particulate less than 10 microns in equivalent aerodynamic diameter
RH	Relative Humidity
TSP	Total suspended particulates
WD	Vector Wind Direction
WS	Vector Wind Speed