

Port of Hay Point

Ambient Air, Noise and Weather Monitoring

Validated Report

1st May 2021 – 31st May 2021

Report No.: DAT17166

Report issue date: 30th June 2021

Maintenance contract: MC2099

ECOTECH PTY LTD. ABN: 32005752081

1492 Ferntree Gully Rd, Knoxfield VIC. 3180. AUSTRALIA

Tel No: 1300 364 946 Fax No: 1300 668 763

Email ecotech@ecotech.com WEB www.ecotech.com

Residential and Control Monitoring Stations

Report No: DAT17166

Port of Hay Point

Customer Details	
Customer	Dalrymple Bay Coal Terminal (DBCT) Pty Ltd
Contact name	Environmental Services Team
Address	Martin Armstrong Drive, Hay Point, QLD 4740
Email	EnvironmentalServicesTeam@dbct.com.au
Phone	(07) 4943 8444

Revision History			
Revision	Report ID	Date	Analyst
0	DAT17166	30/06/2021	Elmira Parto

Report by: Elmira Parto



Approved Signatory: Jon Alexander



Residential and Control Monitoring Stations

Report No: DAT17166

Port of Hay Point

Table of Contents

Customer Details.....	2
Revision History	2
Table of Contents.....	3
List of Figures	4
List of Tables	5
1.0 Introduction	6
1.1. Purpose of monitoring	6
2.0 Monitoring and Data Collection.....	7
2.1. Siting Details.....	7
2.2. Monitored Parameters	9
2.3. Data Collection Methods	11
2.3.1. Data Acquisition	12
2.3.2. Sampling and analysis for Rain.....	13
2.3.3. Sampling and analysis for Noise	13
2.3.4. Sampling and analysis for Deposited Dust.....	13
2.4. Data Validation and Reporting.....	13
2.4.1. Validation	13
2.4.2. Reporting.....	13
3.0 Air Quality Objectives	15
4.0 Results.....	16
4.1. Data Capture	16
4.2. Complaints	17

Residential and Control Monitoring Stations

Report No: DAT17166

Port of Hay Point

4.3.	Air Quality Summary	17
4.3.1.	Air Quality Index (AQI) Rating Assessment	17
4.4.	Graphic Representations	19
	Appendix 1 - Definitions & Abbreviations.....	35

List of Figures

Figure 1:	Port of Hay Point Residential, Rain Gauge and Control Monitoring Stations Location	8
Figure 2:	Detail of the Port of Hay Point Residential Stations Location and Rain Gauge	9
Figure 3:	Daily PM ₁₀ Averages for the Port of Hay Point Assessed Against the Air Quality Index.....	18
Figure 4:	Port of Hay Point PM ₁₀ 24h Average Data Compared to the Licence Limit for May 2021	19
Figure 5:	Dust Deposition Results for Northern Sites, May 2021	21
Figure 6:	Dust Deposition Results for Southern Sites, May 2021	22
Figure 7:	Noise Levels Recorded at P1 for May 2021	24
Figure 8:	Noise Levels Recorded at P2 for May 2021	25
Figure 9:	Noise Levels Recorded at P3 for May 2021	26
Figure 10:	Noise Levels Recorded at P4 for May 2021	27
Figure 11:	P1 Wind Rose 5-Minute Data for May 2021	28
Figure 12:	P2 Wind Rose 5-Minute Data for May 2021	29
Figure 13:	P3 Wind Rose 5-Minute Data for May 2021	30
Figure 14:	P4 Wind Rose 5-Minute Data for May 2021	31
Figure 15:	Port of Hay Point AT 5-Minute Averages Data for May 2021	32
Figure 16:	Port of Hay Point RH 5-Minute Averages Data for May 2021	33
Figure 17:	Port of Hay Point Rain Daily Totals for May 2021.....	34

Residential and Control Monitoring Stations

Report No: DAT17166

Port of Hay Point

List of Tables

Table 1: Port of Hay Point Residential and Control Monitoring Sites Locations	7
Table 2: Parameters measured at the Port of Hay Point Residential and Control Monitoring Stations	10
Table 3: Methods	11
Table 4: Port of Hay Point Air Quality Objectives	15
Table 5: P1-P4 Data Capture for May 2021	16
Table 6: Colour-coded Categories for Air Quality Index	17
Table 7: Port of Hay Point Wind Direction and PM ₁₀ 24h Average Data for May 2021.....	20
Table 8: Noise Levels (L _{A90}) Measured at P1, P2, P3 and P4 for May 2021.....	23

1.0 Introduction

Ecotech Pty Ltd was commissioned by North Queensland Bulk Ports Corporation (NQBP), Dalrymple Bay Coal Terminal Pty Ltd (DBCT P/L) and BMA Hay Point Coal Terminal (HPCT) to provide monitoring and data reporting for the Port of Hay Point environmental monitoring program in Hay Point, Queensland. Ecotech commenced services under the ambient air quality monitoring program Contract SA294.2016 on the 1st of March 2017.

This report presents the data from May 2021.

The data presented in this report:

- Describes air quality measurements;
- Compares monitoring results;
- Has been quality assured.

1.1. Purpose of monitoring

This Ambient Air Monitoring Program has been established to proactively monitor ambient air, noise and meteorological conditions in the community surrounding the Port of Hay Point.

This Ambient Air Monitoring Program has been established to proactively monitor ambient air, noise and meteorological conditions in the community surrounding the Port of Hay Point. The program consists of two control stations (C1 and C2), nine ambient air quality monitoring stations (P1, P2, P3, P4, S1, S2, S3, S5 and S6) and one rain gauge as described in Table 1.

Since the commencement of this monitoring program in 1993, Louisa Creek township has been identified as future strategic port land. NQBP have introduced a voluntary residential buy back scheme and taken steps to prevent residential re-intensification in zones immediately adjacent to the Port. Subsequently the monitoring station - P2 is no longer in as populated residential location as when the program initially began.

Residential and Control Monitoring Stations

Report No: DAT17166

Port of Hay Point

2.0 Monitoring and Data Collection

2.1. Siting Details

The Sites consist of two Control stations (C1 and C2), nine Residential ambient air quality monitoring stations (P1, P2, P3, P4, S1, S2, S3, S5 and S6) and one Rain Gauge. The stations' location and siting details are described in the following table and figures.

Table 1: Port of Hay Point Residential and Control Monitoring Sites Locations

Site Name	Geographical Coordinates	Height Above Sea Level (m)
C1 - Grasstree Beach (South)	21°21'54.71"S, 149°18'25.60"E	8
C2 - Grasstree Beach (North)	21°22'3.06"S, 149°18'27.19"E	10
P1 - Louisa Creek, Edmund Avenue (North)	21°16'21.43"S, 149°15'47.96"E	6
P2 - Louisa Creek, Edmund Avenue (South)	21°16'48.46"S, 149°16'34.64"E	10
P3 - Half Tide Car Park	21°17'45.34"S, 149°17'21.76"E	9
P4 - Salonika Beach	21°18'29.32"S, 149°17'33.64"E	12
S1 - Louisa Creek (North)	21°16'35.88"S, 149°16'14.42"E	1
S2 - Louisa Creek (South)	21°16'46.88"S, 149°16'29.00"E	4
S3 – Osborne's Residence	21°17'23.20"S, 149°16'10.05"E	15
S5 - Salonika Beach	21°18'11.60"S, 149°17'35.24"E	13
S6 - Half Tide Beach	21°17'56.83"S, 149°17'31.84"E	9
Rain Gauge	21°17'23.52"S, 149°17'17.41"E	7

Residential and Control Monitoring Stations

Report No: DAT17166

Port of Hay Point



Figure 1: Port of Hay Point Residential, Rain Gauge and Control Monitoring Stations Location



Figure 2: Detail of the Port of Hay Point Residential Stations Location and Rain Gauge

2.2. Monitored Parameters

Table 2 on the next page details the parameters monitored and the instruments used at Port of Hay Point Residential and Control monitoring stations. Appendix 1 defines any abbreviated parameter names used throughout the report.

Sampling of all parameters is continuous, with the exception of Deposited dust. Deposited dust is captured over a one-month period and the sample bottles collected once a month.

For meteorological sensors, the elevation given in the table below is the height above ground level at the monitoring station.

Residential and Control Monitoring Stations

Report No: DAT17166

Port of Hay Point

Table 2: Parameters measured at the Port of Hay Point Residential and Control Monitoring Stations

Site Code	Parameter Measured	Instrument and Measurement Technique
C1, C2, S1, S2, S3, S5 and S6	Deposited Particulate Matter	Dust Deposition Gauge
P3	Deposited Particulate Matter	Dust Deposition Gauge
	PM ₁₀	Thermo – TEOM 1405 (Tapered Element Oscillating Microbalance)
	Wind Speed (horizontal, elevation 10m)	Vaisala WXT520 Multi-sensor Weather Monitor
	Wind Direction (elevation 10m)	Vaisala WXT520 Multi-sensor Weather Monitor
	Ambient Temperature (elevation 10m)	Vaisala WXT520 Multi-sensor Weather Monitor
	Relative Humidity (elevation 10m)	Vaisala WXT520 Multi-sensor Weather Monitor
	Noise	Class 1 Brüel & Kjær 2250 Sound Level Meter
	P1, P2 and P4	Deposited Particulate Matter
PM ₁₀		Thermo – TEOM 1405 (Tapered Element Oscillating Microbalance)
Wind Speed (horizontal, elevation 10m)		Gill Windsonic Op1
Wind Direction (elevation 10m)		Gill Windsonic Op1
Noise		Class 1 Brüel & Kjær 2250 Sound Level Meter

Residential and Control Monitoring Stations

Report No: DAT17166

Port of Hay Point

Site Code	Parameter Measured	Instrument and Measurement Technique
Rain Gauge	Rainfall	Hydrological Services tipping bucket rain gauge - Model TB3

Since the beginning of the project in March 2017 until the 9th of July 2018, the TEOMs at sites P1, P2, P3 and P4 were configured to measure TSP. After this date, measurements were changed to PM₁₀ due to updates to the Dalrymple Bay Coal Terminal Pty Ltd and Hay Point Environmental Authority Permit¹.

2.3. Data Collection Methods

Table 3 below shows the methods used for data collection.

Table 3: Methods

Parameter Measured	Data Collection Methods Used	Description of Method
Deposited Particulate Matter (<i>Sampling by Ecotech</i>)	AS/NZS 3580.10.1 2016	Methods for sampling and analysis of ambient air. Method 10.1: Determination of particulate matter—Deposited matter—Gravimetric method
	Ecotech Laboratory Manual	In-house method 7.6 – Measurement of deposited particulate matter – gravimetric method using dust deposition gauge
Deposited Particulate Matter (<i>Analysis by SGS</i>)	AN502(Sydney) /AN503	The mass deposition rate of deposited matter is calculated from the mass of solids obtained, the funnel cross-section area and the exposure period.
PM ₁₀ (TEOM)	AS/NZ 3580.9.8-2008	Methods for sampling and analysis of ambient air. Method 9.8: Determination of suspended particulate matter - PM ₁₀ continuous direct mass method using a tapered element oscillating microbalance analyser.
	Ecotech Laboratory Manual	In-house method 7.3- Particulates - PM _{2.5} , PM ₁₀ , TSP by TEOM

¹ Department of Environment and Heritage Protection Environmental Authority Permits EPPR00474413 and EPPR00504513.

Residential and Control Monitoring Stations

Report No: DAT17166

Port of Hay Point

Parameter Measured	Data Collection Methods Used	Description of Method
Vector Wind Speed (Horizontal)	AS/NZS 3580.14 2014	Methods for sampling and analysis of ambient air. Method 14: Meteorological monitoring for ambient air quality monitoring applications
	Ecotech Laboratory Manual	In-house method 8.1 Wind speed (Horizontal) by anemometer
Vector Wind Direction	AS/NZS 3580.14 2014	Methods for sampling and analysis of ambient air. Method 14: Meteorological monitoring for ambient air quality monitoring applications
	Ecotech Laboratory Manual	In-house method 8.3 Wind direction by anemometer
Ambient Temperature	AS/NZS 3580.14 2014	Methods for sampling and analysis of ambient air. Method 14: Meteorological monitoring for ambient air quality monitoring applications
	Ecotech Laboratory Manual	In-house method 8.4 Temperature ambient by thermoelectric techniques
Relative Humidity	AS/NZS 3580.14 2014	Methods for sampling and analysis of ambient air. Method 14: Meteorological monitoring for ambient air quality monitoring applications
	Ecotech Laboratory Manual	In-house method 8.5 – Relative humidity by capacitive thin film polymer sensor
Rain (<i>Sampling by external contractor</i>)	AS/NZS 3580.14 2014	Methods for sampling and analysis of ambient air. Method 14: Meteorological monitoring for ambient air quality monitoring applications. Rainfall by tipping bucket rain gauge
Noise (L_{eq} , L_{10} and L_{90}) (<i>Analysis by Marshall Day Acoustics</i>)	DEHP Noise Measurement Manual (2013) and AS 1055.1: 1997	Acoustics - Description and measurement of environmental noise - Part 1: General procedures

2.3.1. Data Acquisition

Data acquisition for continuously monitored parameters, with the exception of noise and rain, is performed using an Envista logger situated at each of the monitoring sites. Each logger is equipped with a 4G modem for remote data collection. The recorded data is remotely collected and transferred via FTP at 10 minute intervals (using Airodis™ version 5.1.6) and stored at Ecotech’s Environmental Reporting Services (ERS) department in Melbourne, Australia. Data samples are logged in 5 minute intervals.

2.3.2. Sampling and analysis for Rain

Rain sampling and analysis are conducted by an external contractor. The 5 minute data is sent monthly to Ecotech by Dalrymple Bay Coal Terminal Pty Ltd (DBCT P/L).

2.3.3. Sampling and analysis for Noise

Noise data samples are logged in 5 minute intervals. The data is downloaded monthly by Ecotech field service technicians and sent to Marshall Day Acoustics for analysis.

2.3.4. Sampling and analysis for Deposited Dust

Deposited dust sampling is conducted by Ecotech field service technicians. Sample bottles are sent to SGS Cairns Environmental Laboratory for analysis. The laboratory is NATA accredited for compliance with ISO/IEC 17025:2005 (Acc. No. 2562, Site No.3146).

2.4. Data Validation and Reporting

2.4.1. Validation

The Ecotech ERS department perform daily data checks on continuously monitored parameters (with the exception of noise and rainfall data) to ensure maximum data capture rates are maintained. Any equipment failures are communicated to the responsible field engineers for urgent rectification. Ecotech ERS maintains two distinct databases containing non-validated and validated data respectively.

The validated database is created by duplicating the non-validated database and then flagging data affected by instrument faults, calibrations and other maintenance activities. The data validation software requires the analyst to supply a valid reason (e.g. backed by maintenance notes, calibration sheets etc.) in the database for flagging any data as invalid.

Details of all invalid or missing data are recorded in the Valid Data Exception Tables.

Validation is performed by the analyst, and the validation is reviewed. Graphs and tables are generated based on the validated five minute data.

Note: Validation for noise data is performed by the subcontractor Marshall Day Acoustics.

2.4.2. Reporting

The data contained in this report is based on Australian Eastern Standard Time.

All averages are calculated from the five minute data. Averages are based on a minimum of 75% valid readings within the averaging period. Where data capture is low for a particular parameter, summary values (e.g. monthly maximum and minimum) may be based on less than 75% valid samples.

Residential and Control Monitoring Stations

Report No: DAT17166

Port of Hay Point

The reader should use caution when interpreting these values as they may not be representative of conditions for the entire sample period.

Averaging periods of eight hours or less are reported for the end of the period, i.e. the hourly average 02:00am is for the data collected from 1:00am to 2:00am. One hour averages are calculated based on a clock hour. One day averages are calculated based on calendar days.

Rain Reporting

Rain results are provided to Ecotech by Dalrymple Bay Coal Terminal Pty Ltd (DBCT P/L) and included in this report.

Deposited Dust Reporting

Deposited dust results are provided to Ecotech by the SGS Cairns Environmental Laboratory and summarised within this report.

Noise Data Reporting

Noise levels results are provided to Ecotech by Marshall Day Acoustics and summarised within this report.

Wind Data Reporting

Wind speed and wind direction data associated with calm wind conditions are reported in accordance with the requirements of *AS/NZS 3580.14-2014*. Calm wind conditions are defined as wind speeds below the starting threshold of the wind speed/direction sensors.

3.0 Air Quality Objectives

The air quality objectives monitored at the Port of Hay Point monitoring network sites are taken from the Dalrymple Bay Coal Terminal Pty Ltd and Hay Point Environmental Authority Permit².

The air quality objectives are shown in Table 4 below.

Table 4: Port of Hay Point Air Quality Objectives

Parameter	Time Period	Licence Limit	Units
Deposited Dust – Total Insoluble Solids	1 day: based on 1 month sampling	120 mg/m ² /day	mg/m ² /day
PM ₁₀	1 day	50 µg/m ³ – when generated by port activities and measured at any sensitive or commercial place	µg/m ³
L _{A90}	15 min	Day level (7am – 7pm) = 55 dB(A) Night level (7pm – 7am) = 53 dB(A)	dB(A)

² Department of Environment and Heritage Protection Environmental Authority Permits EPPR00474413 and EPPR00504513.

4.0 Results

4.1. Data Capture

Data capture is based on 5 minute data and refers to the amount of available data collected during the report period. The percentage of data captured is calculated using the following equation:

$$\text{Data capture} = (\text{Reported air quality data} / \text{Total data}) \times 100\%$$

Where:

- Reported air quality data = Number of instrument readings which have been validated through a quality assured process and excludes all data errors, zero data collection due to calibration, failures and planned and unplanned maintenance.
- Total data = Total number of instrument readings since the start of the term assuming no maintenance, errors, loss of data or calibration.

Table 5 displays data capture statistics for the reporting period (May 2021). **Bold** values in the table indicate data capture below 90%.

Table 5: P1-P4 Data Capture for May 2021

Parameter	Data Capture (%)			
	P1	P2	P3	P4
PM ₁₀	99.7	99.6	99.7	97.3
WS and WD	96.9	96.9	96.9	96.9
AT ³	N/A	N/A	96.9	N/A
RH	N/A	N/A	96.9	N/A
Noise	100.0	100.0	100.0	100.0

The data capture for all of the parameters at sites P1, P2, P3 and P4 was above 90% for the reporting month.

The overall monthly percentage of data captured for the 11 Dust Deposition Gauges was 100%.

³ AT and RH parameters are only measured at P3 station.

4.2. Complaints

No dust complaints were received by the PoHP terminals during May 2021.

4.3. Air Quality Summary

4.3.1. Air Quality Index (AQI) Rating Assessment

The index value is the pollutant concentration expressed as a proportion of the pollutant goal concentration: dividing the pollutant concentration by the pollutant goal concentration and then multiplying by 100. For Queensland, the 'pollutant goal concentration' used to calculate the index value is defined by the Air National Environment Protection Measure for Ambient Air Quality (Air NEPM) standard and it is equal to 50 $\mu\text{g}/\text{m}^3$ for PM_{10} . The air quality index comprises five colour-coded categories shown on the next table.⁴

Table 6: Colour-coded Categories for Air Quality Index

Not available	Very good 0-33	Good 34-66	Fair 67-99	Poor 100-149	Very poor >150
---------------	-------------------	---------------	---------------	-----------------	-------------------

The PM_{10} 24 hour average values for the reporting month in the stations P1, P2, P3 and P4 were assessed against the Air Quality Index (AQI) Rating, and the pie chart on the next page presents the percentage of the days for which a specific air quality index category was identified.

⁴ <https://www.qld.gov.au/environment/pollution/monitoring/air-monitoring/air-quality-index/>

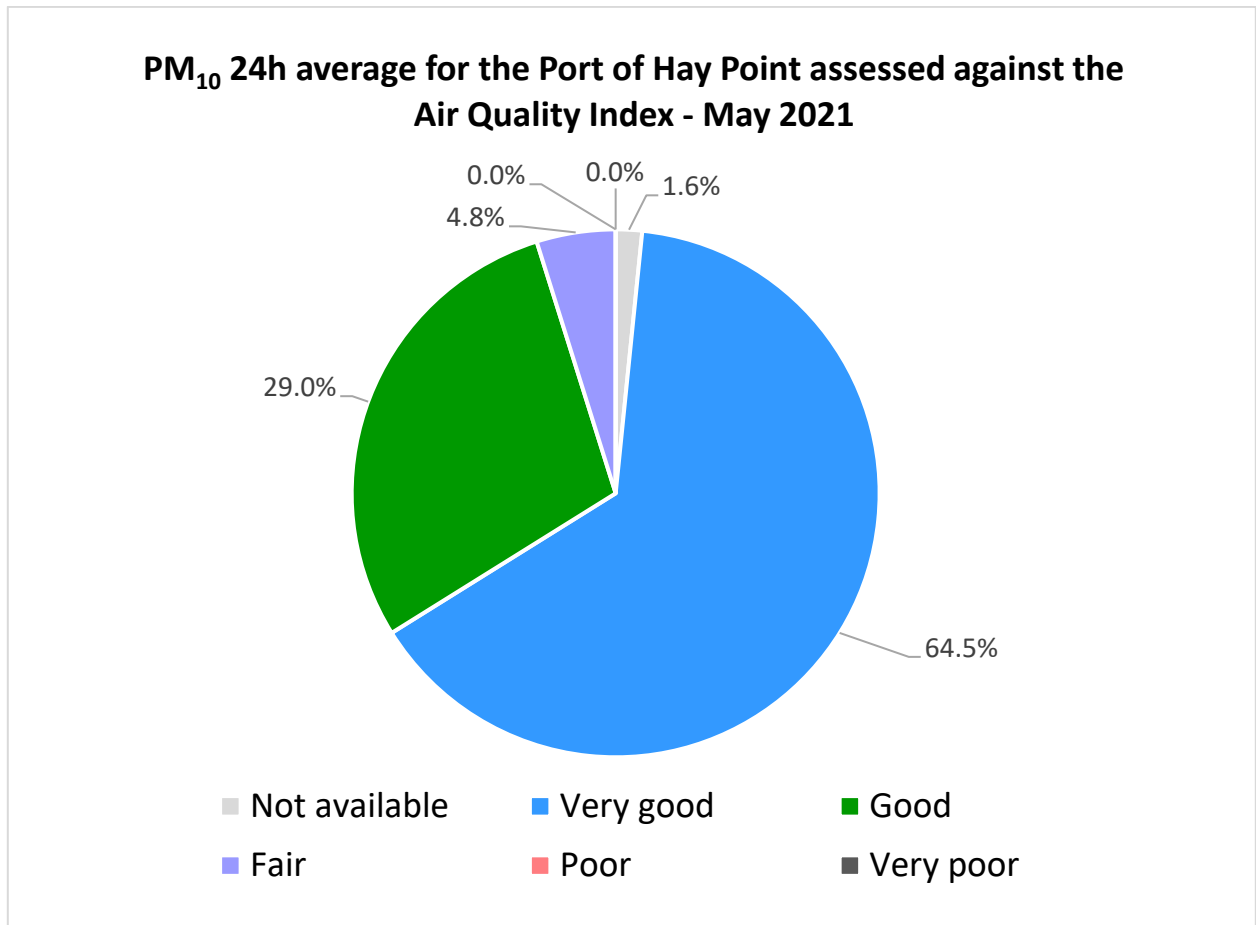


Figure 3: Daily PM₁₀ Averages for the Port of Hay Point Assessed Against the Air Quality Index

The majority of the days during the reporting period (May 2021) presented Air Quality Index classified as Very Good (64.5%) or Good (29.0%).

Residential and Control Monitoring Stations

Report No: DAT17166

Port of Hay Point

Table 7: Port of Hay Point Wind Direction and PM₁₀ 24h Average Data for May 2021

Date	PM ₁₀ exceedence limit (µg/m ³)	Wind direction	P1 PM ₁₀ (µg/m ³)	P2 PM ₁₀ (µg/m ³)	P3 PM ₁₀ (µg/m ³)	P4 PM ₁₀ (µg/m ³)
1/05/2021	50.0	South	13	14	14	22
2/05/2021	50.0	South	13	13	15	21
3/05/2021	50.0	South	13	14	15	21
4/05/2021	50.0	South	14	15	14	-
5/05/2021	50.0	North	8	8	10	-
6/05/2021	50.0	South	3	9	9	11
7/05/2021	50.0	North	8	7	13	13
8/05/2021	50.0	South	9	8	9	12
9/05/2021	50.0	South	10	9	9	14
10/05/2021	50.0	South	10	10	9	14
11/05/2021	50.0	South	11	11	10	12
12/05/2021	50.0	South	12	14	13	15
13/05/2021	50.0	South	9	11	10	12
14/05/2021	50.0	South	6	16	13	12
15/05/2021	50.0	South	9	12	14	14
16/05/2021	50.0	South	11	15	15	22
17/05/2021	50.0	South	16	19	18	27
18/05/2021	50.0	South	19	22	21	37
19/05/2021	50.0	South	16	17	19	30
20/05/2021	50.0	South	19	20	24	38
21/05/2021	50.0	South	15	16	18	32
22/05/2021	50.0	South	15	16	20	31
23/05/2021	50.0	South	15	16	18	35
24/05/2021	50.0	South	17	18	20	35
25/05/2021	50.0	South	11	12	12	18
26/05/2021	50.0	South	14	15	15	25
27/05/2021	50.0	South	9	12	12	16
28/05/2021	50.0	South	9	15	14	21
29/05/2021	50.0	South	23	23	24	39
30/05/2021	50.0	South	19	20	22	41
31/05/2021	50.0	South	17	18	19	29

Residential and Control Monitoring Stations

Report No: DAT17166

Port of Hay Point

The next graphs present the deposited dust results for the Total Insoluble Solids in comparison with the licence limit for the reporting month⁵. The results are presented in two different graphs: one for the sites located to the North of the Terminal (S1, S2, S3, P1 and P2) and another for the sites located to the South of the Terminal (S5, S6, P3 and P4).

The Total Insoluble Solids are classified in 4 categories: organic matter (plant and animal material), fine dark particles (dark material), mineral fraction (light material) and other material such as plastics.

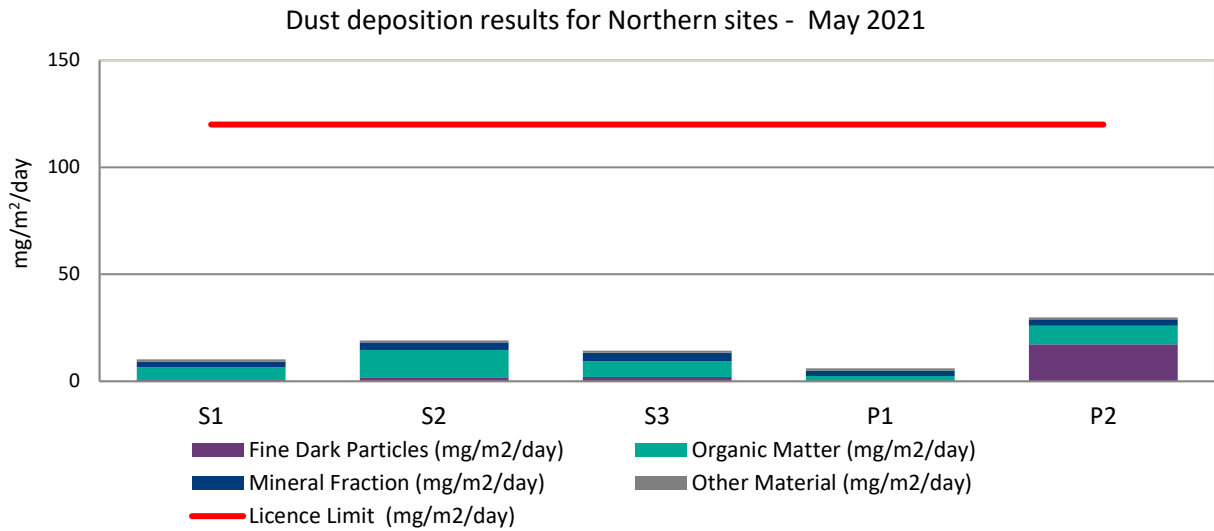


Figure 5: Dust Deposition Results for Northern Sites, May 2021

⁵ Results were provided to Ecotech by the SGS Cairns Environmental Laboratory.

Residential and Control Monitoring Stations

Report No: DAT17166

Port of Hay Point

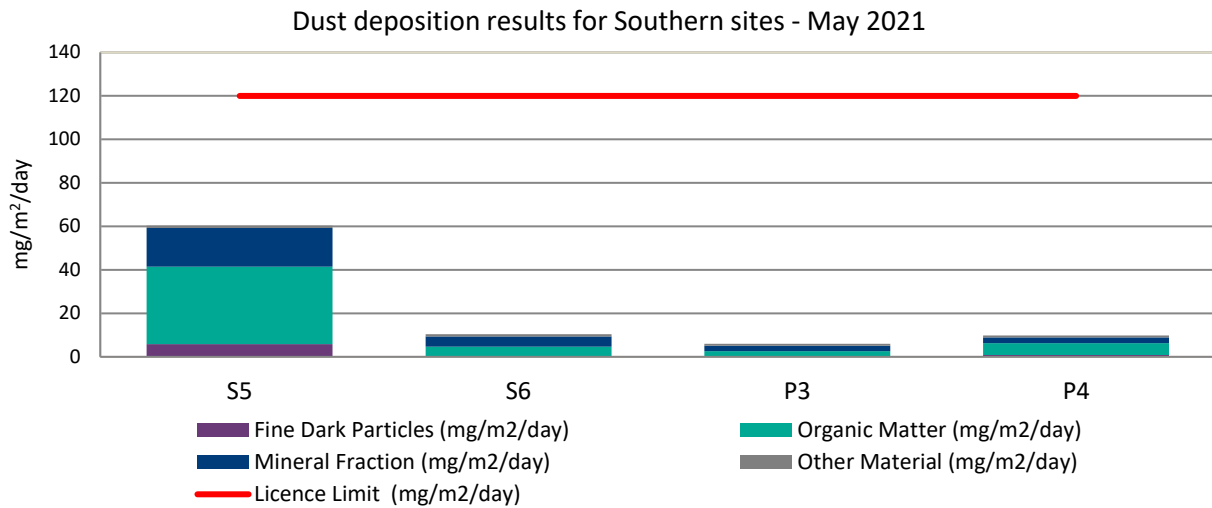


Figure 6: Dust Deposition Results for Southern Sites, May 2021

Total Insoluble Solids concentration for sites P1, P2, P3 and P4 was below the licence. During May 2021, the prevailing wind direction was from the South (94.0 % of the days).

Residential and Control Monitoring Stations

Report No: DAT17166

Port of Hay Point

Table 8 provides a summary of the average L_{A90} values recorded at sites P1, P2, P3 and P4 during May 2021. Result summaries and interpretations below are those provided by Marshall Day Acoustics.

Table 8: Noise Levels (L_{A90}) Measured at P1, P2, P3 and P4 for May 2021

Location	L_{A90} dB Average 12hr Level*	Standard deviation	Range
P1 Day	42	3.7	32 - 70
P1 Night	44	3.2	33 - 49
P2 Day	48	3.3	39 - 62
P2 Night	48	3.2	38 - 56
P3 Day	47	1.9	43 - 58
P3 Night	46	1.9	43 - 54
P4 Day	49	3.5	41 - 61
P4 Night	49	3.3	43 - 59

*Average of L_{A90} , 15 min for the day and evening periods

Note: The recorded noise levels include extraneous noise and weather-related events, and are not pure component sound levels.

The average L_{A90} sound pressure levels at all monitoring locations (including adverse weather and other extraneous noise sources) were below the corresponding target noise levels or the Day and Night periods.

Sound levels measured throughout May 2021 at monitoring locations P1, P2, P3 and P4 have been plotted in Figures 7 to Figure 10 respectively.

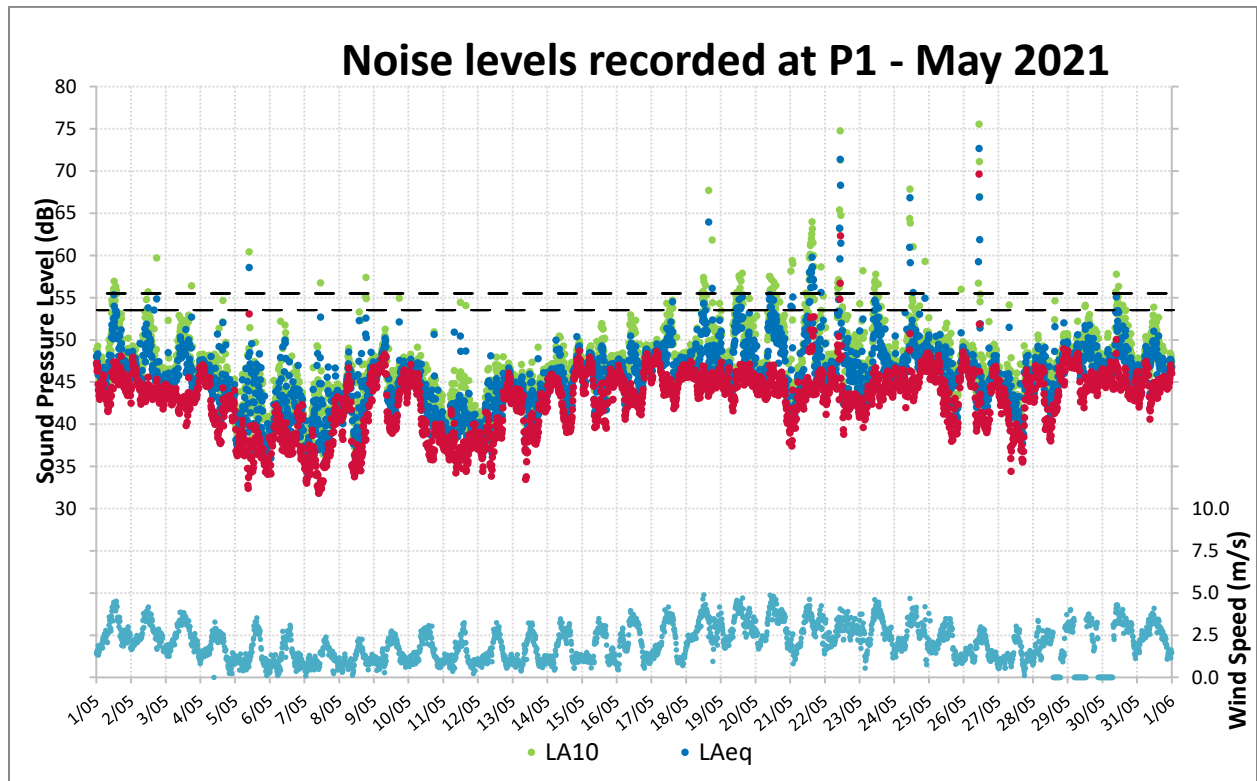


Figure 7: Noise Levels Recorded at P1 for May 2021

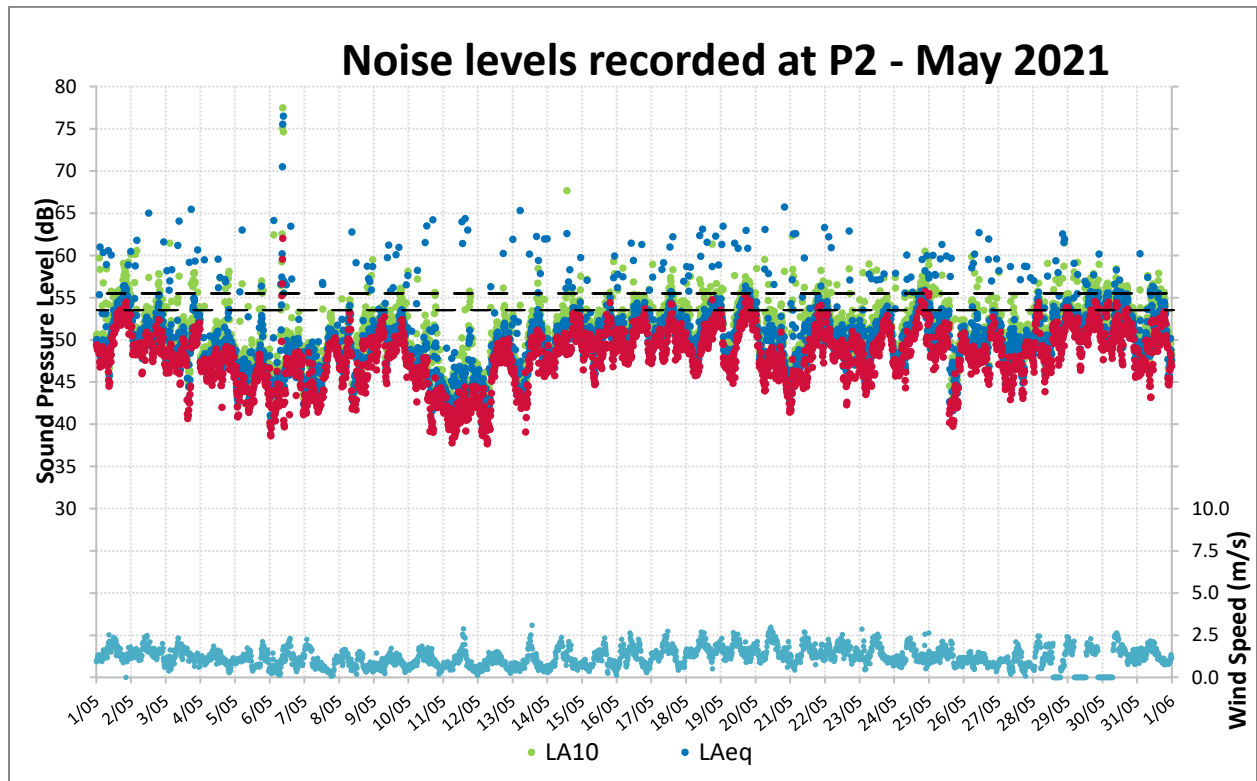


Figure 8: Noise Levels Recorded at P2 for May 2021

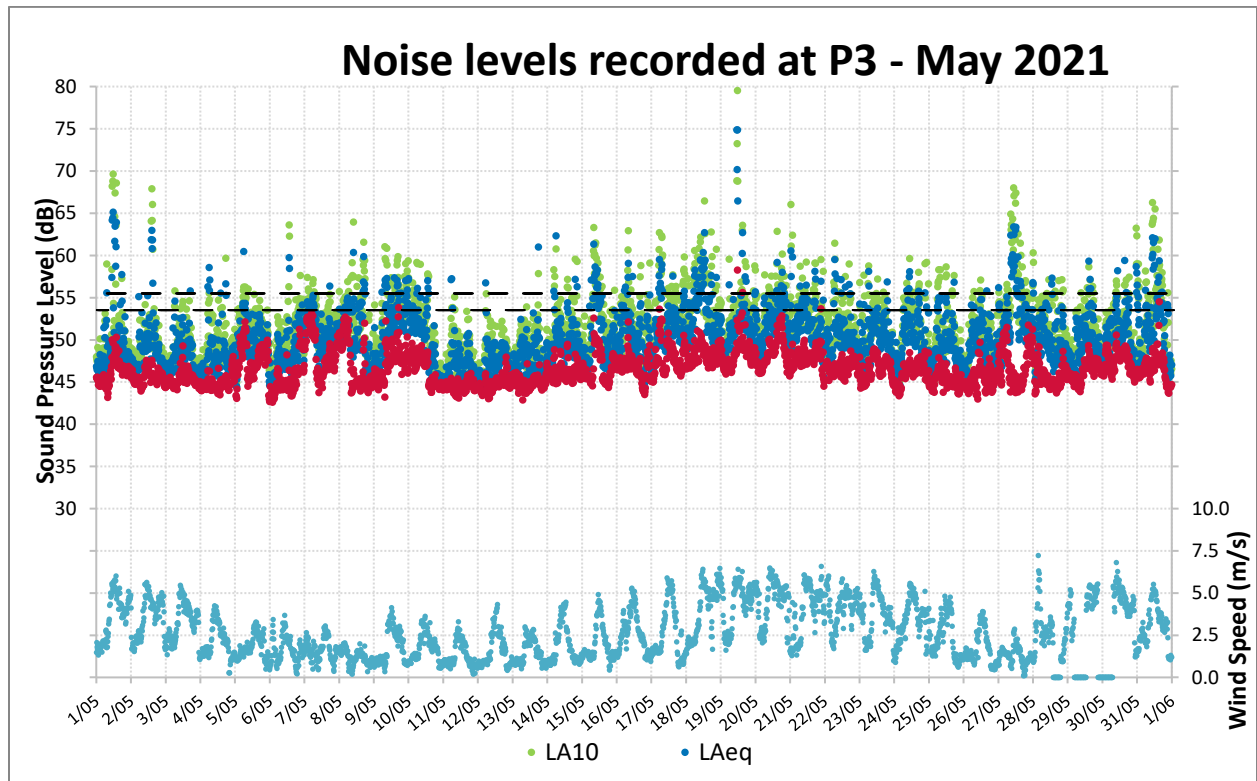


Figure 9: Noise Levels Recorded at P3 for May 2021

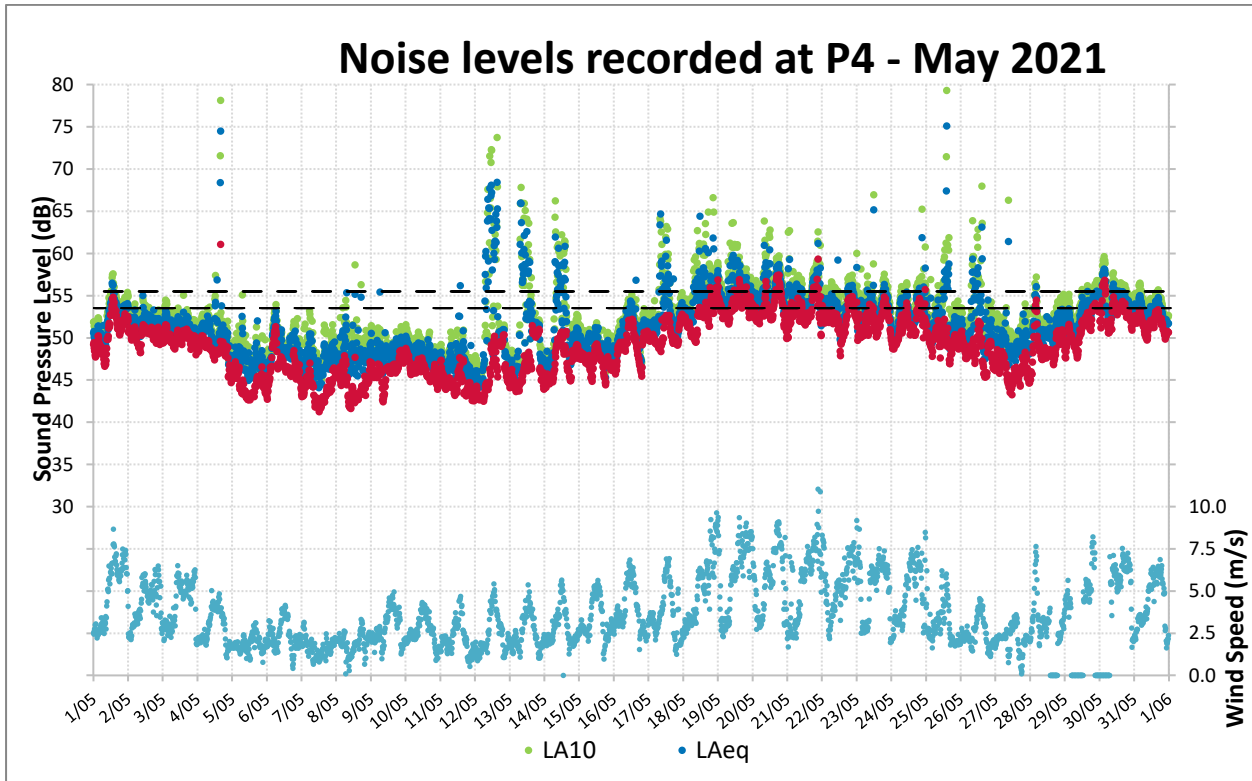
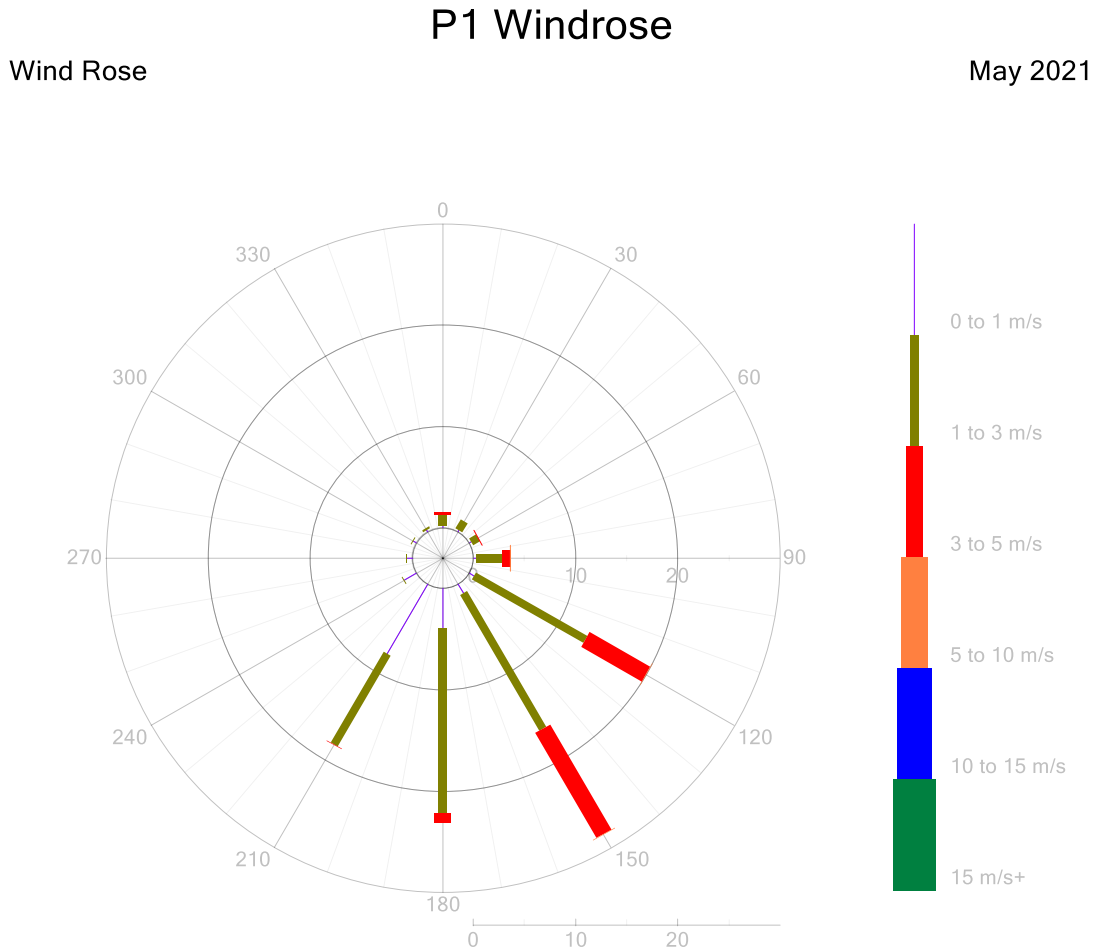


Figure 10: Noise Levels Recorded at P4 for May 2021

Residential and Control Monitoring Stations

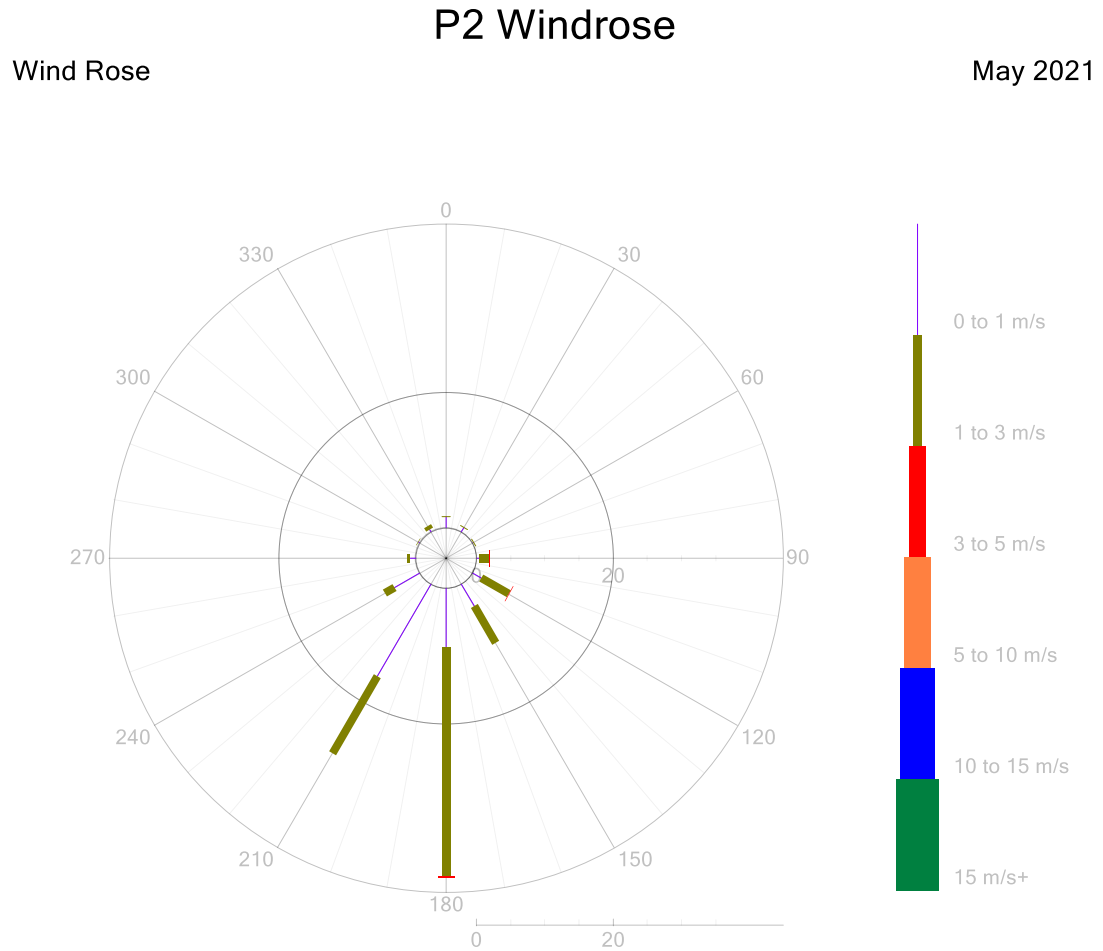
Report No: DAT17166

Port of Hay Point



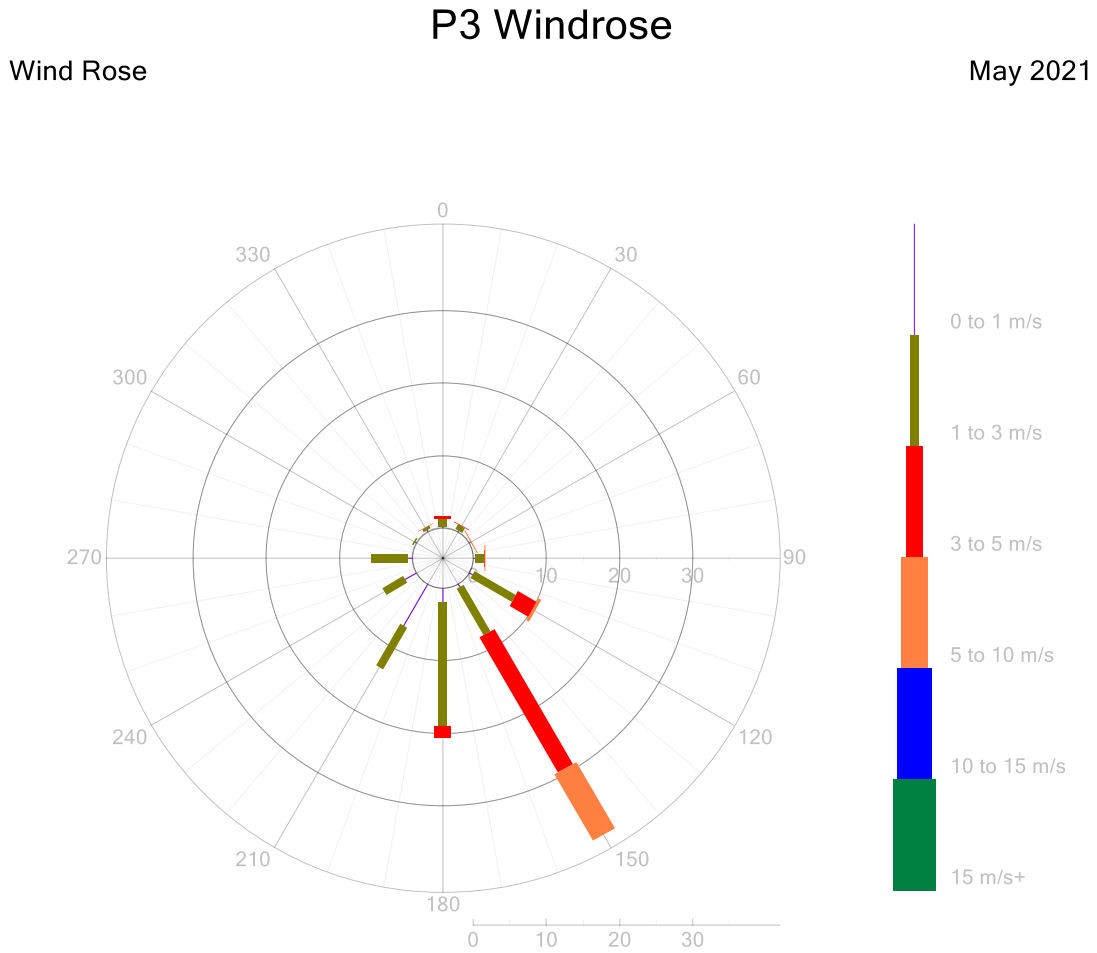
96.9% valid data present

Figure 11: P1 Wind Rose 5-Minute Data for May 2021



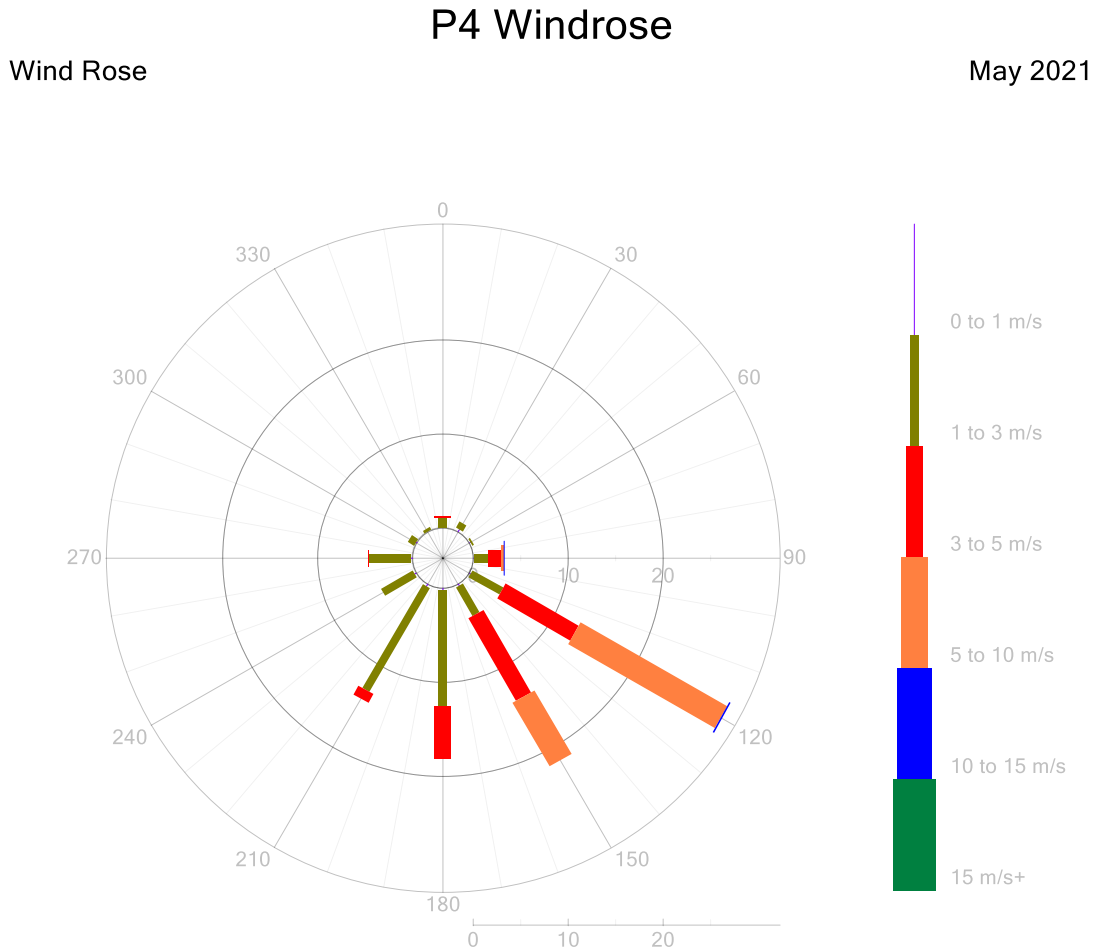
96.9% valid data present

Figure 12: P2 Wind Rose 5-Minute Data for May 2021



96.9% valid data present

Figure 13: P3 Wind Rose 5-Minute Data for May 2021



96.9% valid data present

Figure 14: P4 Wind Rose 5-Minute Data for May 2021

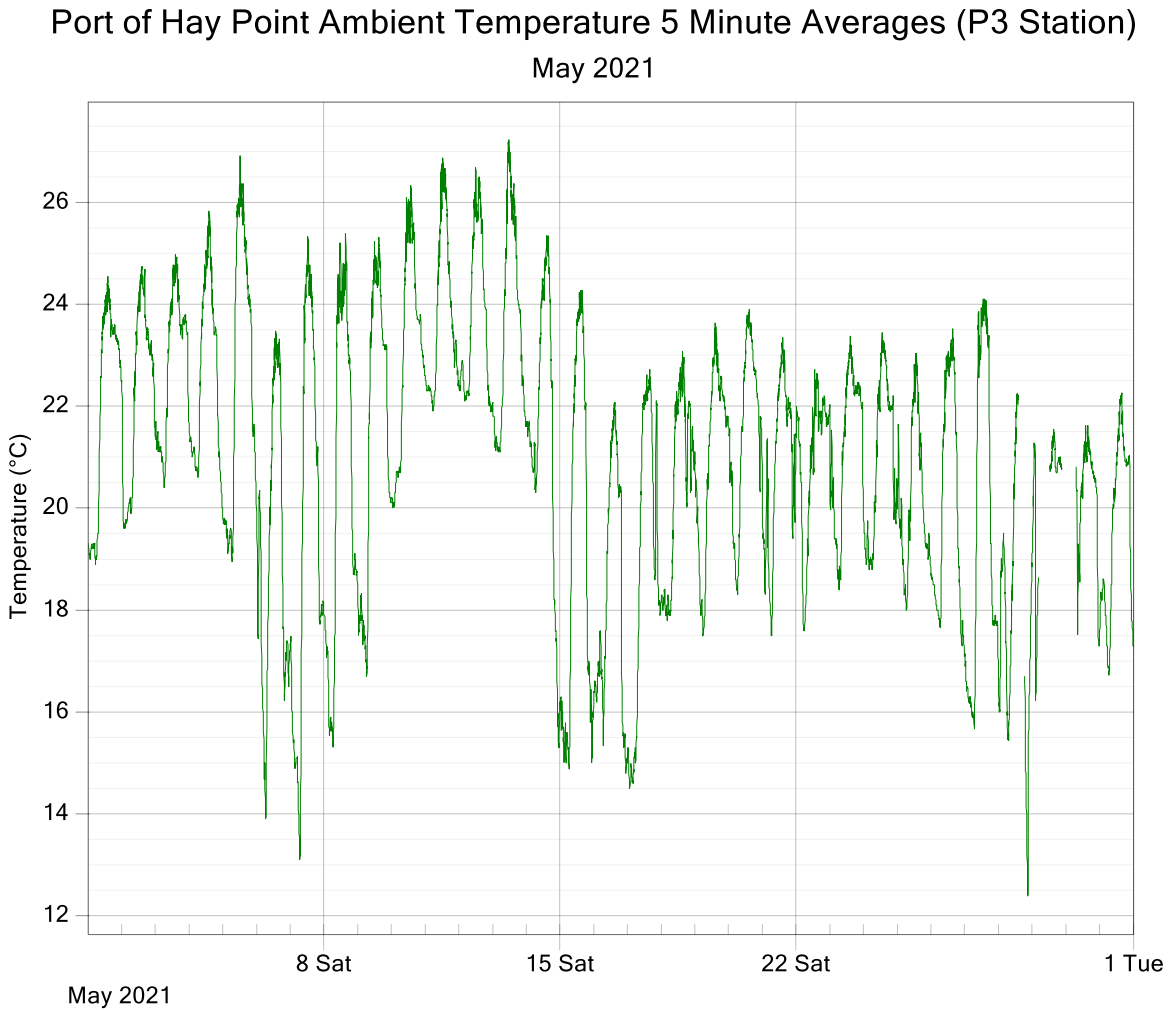


Figure 15: Port of Hay Point AT 5-Minute Averages Data for May 2021

Port of Hay Point Relative Humidity 5-Minute Averages (P3 Station)
May 2021

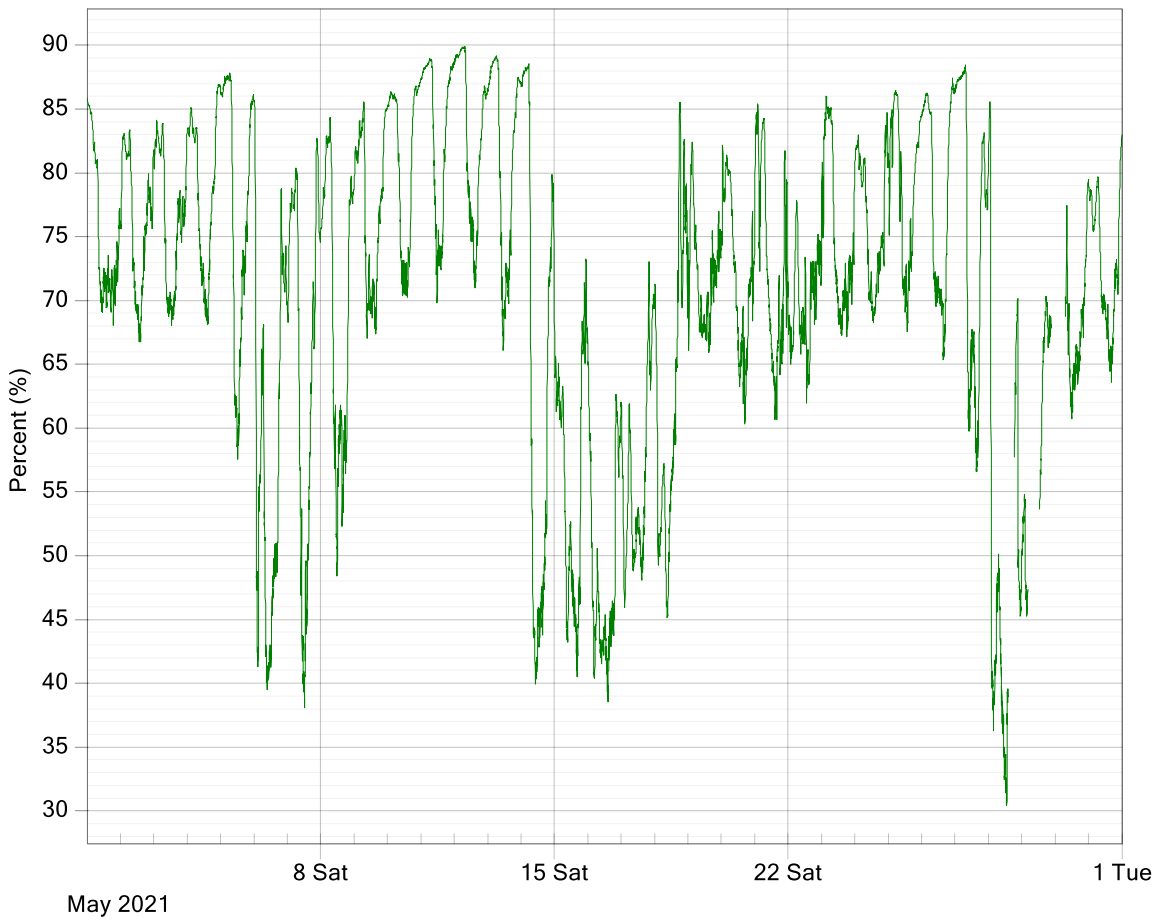


Figure 16: Port of Hay Point RH 5-Minute Averages Data for May 2021

Port of Hay Point Rain Daily Totals

May 2021

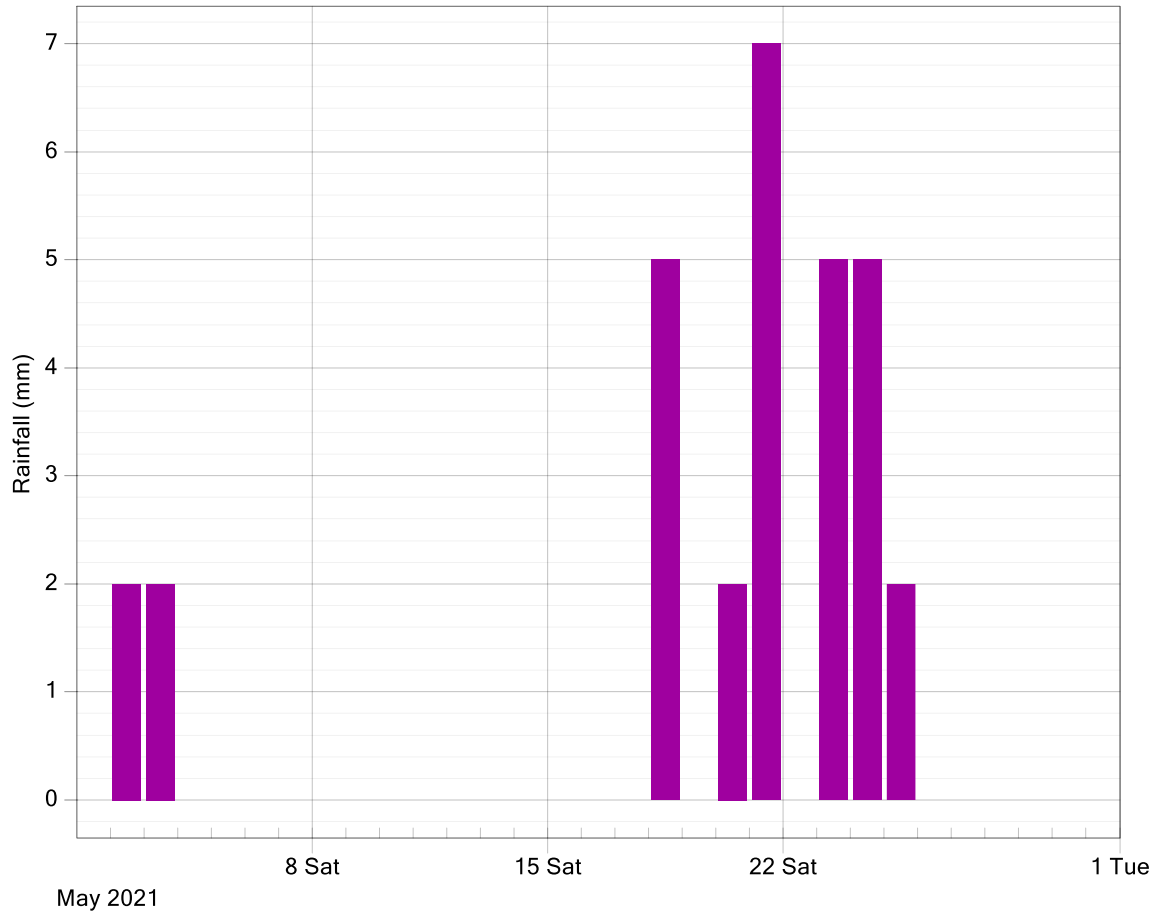


Figure 17: Port of Hay Point Rain Daily Totals for May 2021

----- END OF REPORT -----

Appendix 1 - Definitions & Abbreviations

°C	Degrees Celsius
µg/m ³	Micrograms per cubic meter at standard temperature and pressure (0°C and 101.3 kPa)
AT	Ambient Temperature
atm	Atmosphere
calm	Wind conditions where the wind speed is below the operating range of the wind sensor
dBa	A-weighted decibels
deg	Degrees (True North)
m/s	Meters per second
mg/m ²	Milligrams per square meter
PM ₁₀	Particulate less than 10 microns in equivalent aerodynamic diameter
RH	Relative Humidity
TSP	Total suspended particulates
WD	Vector Wind Direction
WS	Vector Wind Speed