


# Port security advice for the general public



In the event of a heightened or exceptional security level being declared at the Port of Hay Point, additional security measures will be put in place on both the land and sea around the port. Boat skippers operating in the port area will need to be mindful to always observe restricted areas on the water.

## Security levels

The following three security levels have been adopted by the government and maritime security industry across Australia.

- **Level 1 (Normal):** the level for which minimum appropriate protective security measures will be maintained within the port.
- **Level 2 (Heightened):** the level for which appropriate additional protective security measures will be maintained, for a period of time, as a result of the heightened risk of a security incident.
- **Level 3 (Exceptional):** the level for which further specific protective security measures will be maintained, for a limited period of time, when a security incident is probable or imminent, although it may not be possible to identify the specific target.

It is expected that Levels 2 and 3 would be rare, short-term events. The Federal Government will notify ports when the security level has been raised, based on intelligence advice.

## Public access land-side

**Dalrymple Bay Coal Terminal, Hay Point Services Terminal and the Half Tide Tug Harbour all have security gates. Unauthorised public access is not allowed beyond these gates or the perimeter fences.**

Also, please note that access to the rock walls beyond the tug harbour gate is not allowed at any security level.

Access to the viewing area under the NQBP building at the top of Horyu Maru Drive may be restricted at heightened security levels.

## Public access water-side

### Half Tide Boat Ramp

Under normal circumstances, there will be no restriction on the boat ramp. Restrictions may apply at Level 2 based on the threat and at Level 3 it would most likely be closed completely.

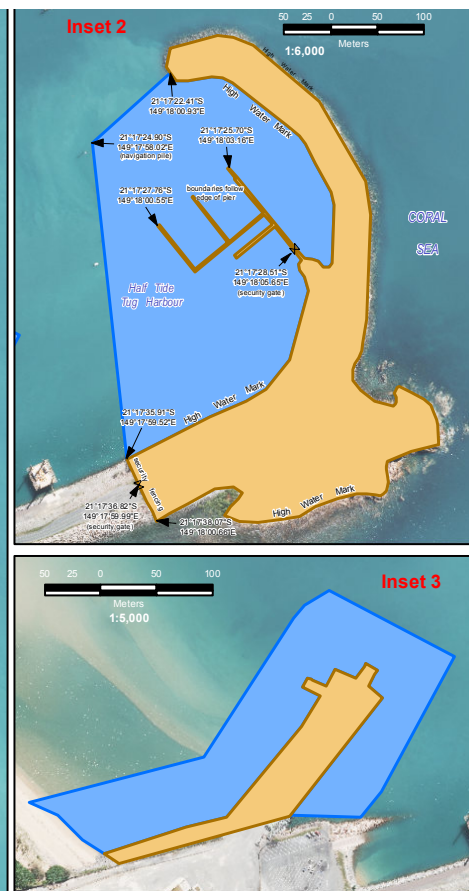
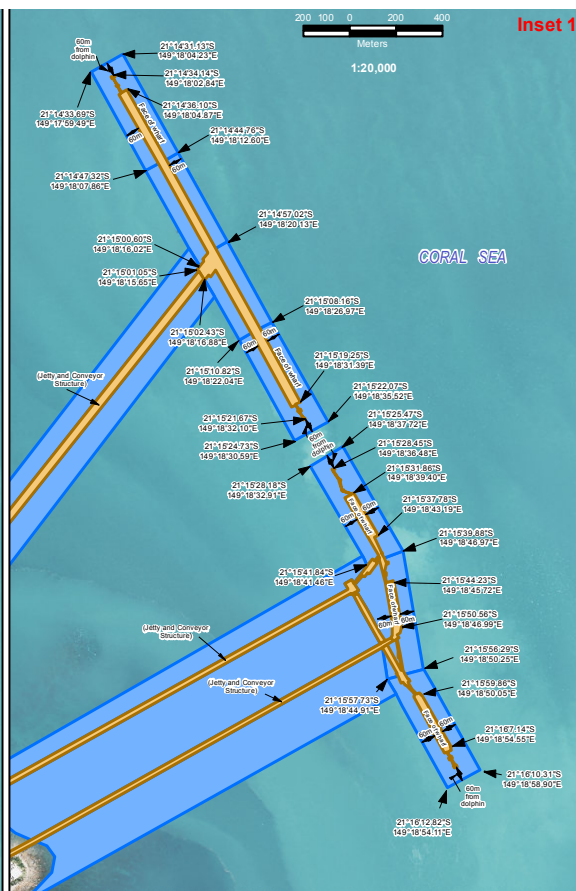
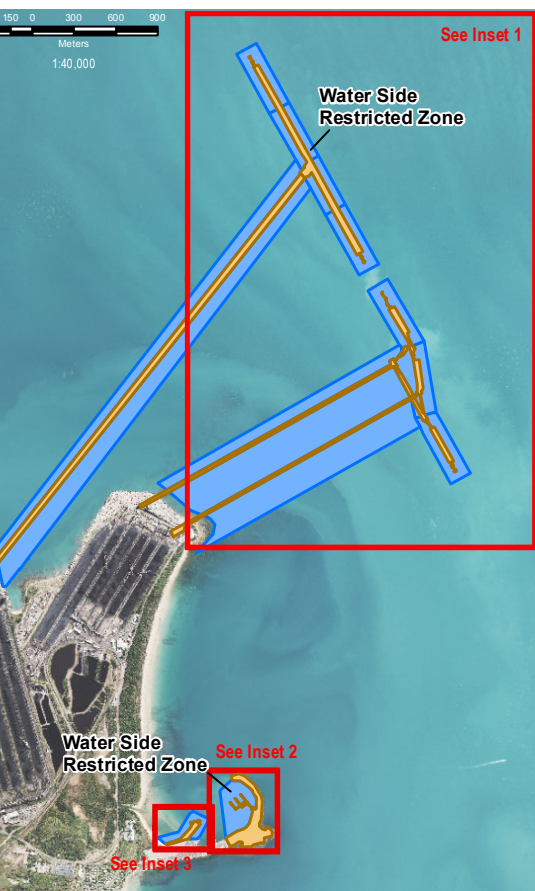
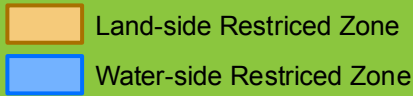
### Half Tide Tug Harbour (Tug Enclosure)

No access to the waters inside the tug enclosure exists at any level for any unauthorised vessel. Signs have been posted identifying the restricted area (see water-side restricted zone on map over the page).

### Coal Terminal Jetties and Wharves

Unauthorised vessels are currently not allowed to pass under, or moor under, either the coal terminal jetty or wharf structures at Hay Point, staying 50 metres clear of the structures. This has been the case for some time and was originally prompted by the safety concerns of the terminals. This restriction remains and will be enforced.

## Legend



At security levels 2 and 3, new security provisions will be activated around the facilities and unauthorised vessels will have to stay at least 60 metres clear of the wharves. Signs will be posted at the boat ramp when this security level comes into force.

## Breaching port security zones

Breaches of port security zones would jeopardise the security and operation of the port, and anyone caught breaching the rules faces serious fines.

All of the operators at the port and the enforcement agencies have been instructed to be on the look out

for breaches and will adopt a zero tolerance.

The Hay Point port facilities are critical to the interests of Queensland and Australia and the security of these facilities will be enforced. Breaches of security access restrictions may bring fines of up to \$5,000.

## Community support of port security

Apart from observing the access restrictions, the general public and boat owners are asked to be on the look out for any suspicious behaviour. This should be reported to port and terminal

authorities. Your co-operation would be much valued.

These security measures have been implemented Australia-wide and NQBP, the Hay Point operators, as well as the maritime industry generally, ask for your understanding and assistance in meeting our security obligations.

## Contact

For more information, please contact Port Security on 07 4943 5209 in the first instance or 07 4955 8174.

NORTH QUEENSLAND BULK PORTS  
P 1300 129 255 E info@nqbp.com.au

HAY POINT • MACKAY • ABBOT POINT • WEIPA



nqbp.com.au

SMART PORTS • BRIGHT FUTURE